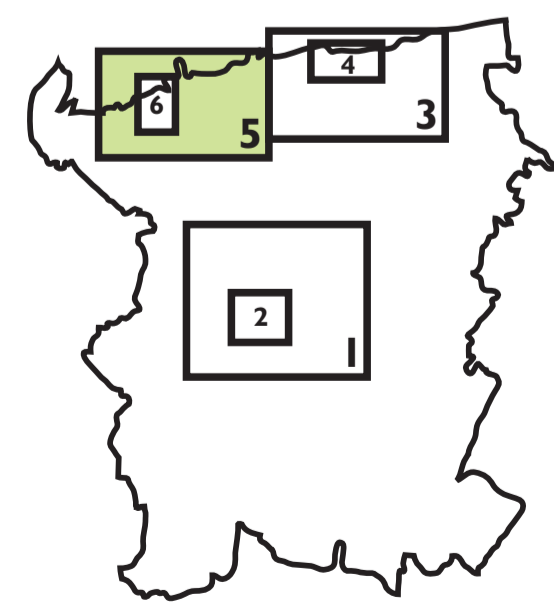


CANTERBURY DISTRICT LOCAL PLAN

Publication Draft
June 2014

Inset 5: Whitstable
Shown overleaf: Inset 4 Herne Bay Town Centre



BOUNDARIES

- Boundary of Inset
- Boundary of Urban Area

STRATEGY

- Strategic Allocations SP3

HOUSING DEVELOPMENT

- Housing HD1

ECONOMIC DEVELOPMENT AND EMPLOYMENT

- Employment EMP1
- Protection of Employment Sites EMP4

TOWN CENTRES AND LEISURE

- Local Centre TCL5

TRANSPORT INFRASTRUCTURE

- Cycle & Pedestrian Route T2

CLIMATE CHANGE

- Environment Agency Area at Risk of Flooding Zone 2 CC5, CC6
- Environment Agency Area at Risk of Flooding Zone 3 CC5, CC6
- Overtopping Zone CC7
- Coastal Protection Zone CC10

LANDSCAPE AND BIODIVERSITY

- Area of High Landscape Value LB2
- Undeveloped Coast LB3
- International Wildlife Sites (Special Protection Area, RAMSAR, Special Area for Conservation) LB5
- Site of Special Scientific Interest LB6
- Regionally Important Geological & Geomorphological Sites LB7
- Local Wildlife Sites LB7
- Local Nature Reserve LB7

HISTORIC ENVIRONMENT

- Conservation Area HE6

OPEN SPACE

- Open Space OS4
- Green Gap OS6, OS7
- Protection of Existing Open Space OS9
- Local Green Space OS1

This map is reproduced from the Ordnance Survey material with the permission of Ordnance Survey on behalf of the Controller of Her Majesty's Stationary Office © Crown Copyright. Unauthorised reproduction infringes Crown copyright and may lead to prosecution or civil proceedings. Canterbury City Council. 100019614. 2014. Additional overlaid information is copyright of Canterbury City Council. Produced by the Cook Hammond & Kell Group.

The numbers refer to policies in the Written Statement. In addition, the following policies are relevant to the area covered by the Inset:

- SP1, SP2, SP4-SP7.
- HD2, HD4, HD5, HD8-HD10.
- EMP2, EMP3, EMP5, EMP6, EMP9, EMP12-EMP15.
- TCL6, TCL8, TCL11.
- T1, T3, T4, T8, T9, T10, T16, T17.
- TV1-TV5, TV7, TV8.
- CC1-CC4, CC8, CC11-CC13.
- DBE1-DBE13.
- HE1, HE4, HE5, HE7-HE13.
- LB4, LB8-LB13.
- OS2, OS6, OS8-OS12, OS15.
- QL1, QL4-QL6, QL8, QL10-QL13.

