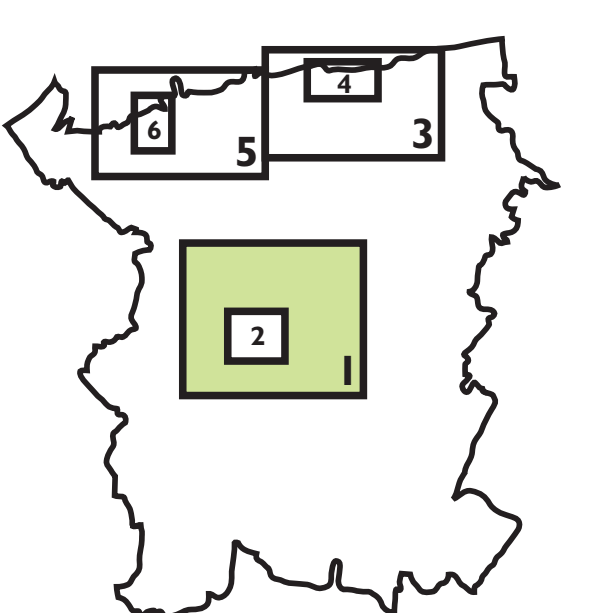


CANTERBURY DISTRICT LOCAL PLAN

Publication Draft
June 2014



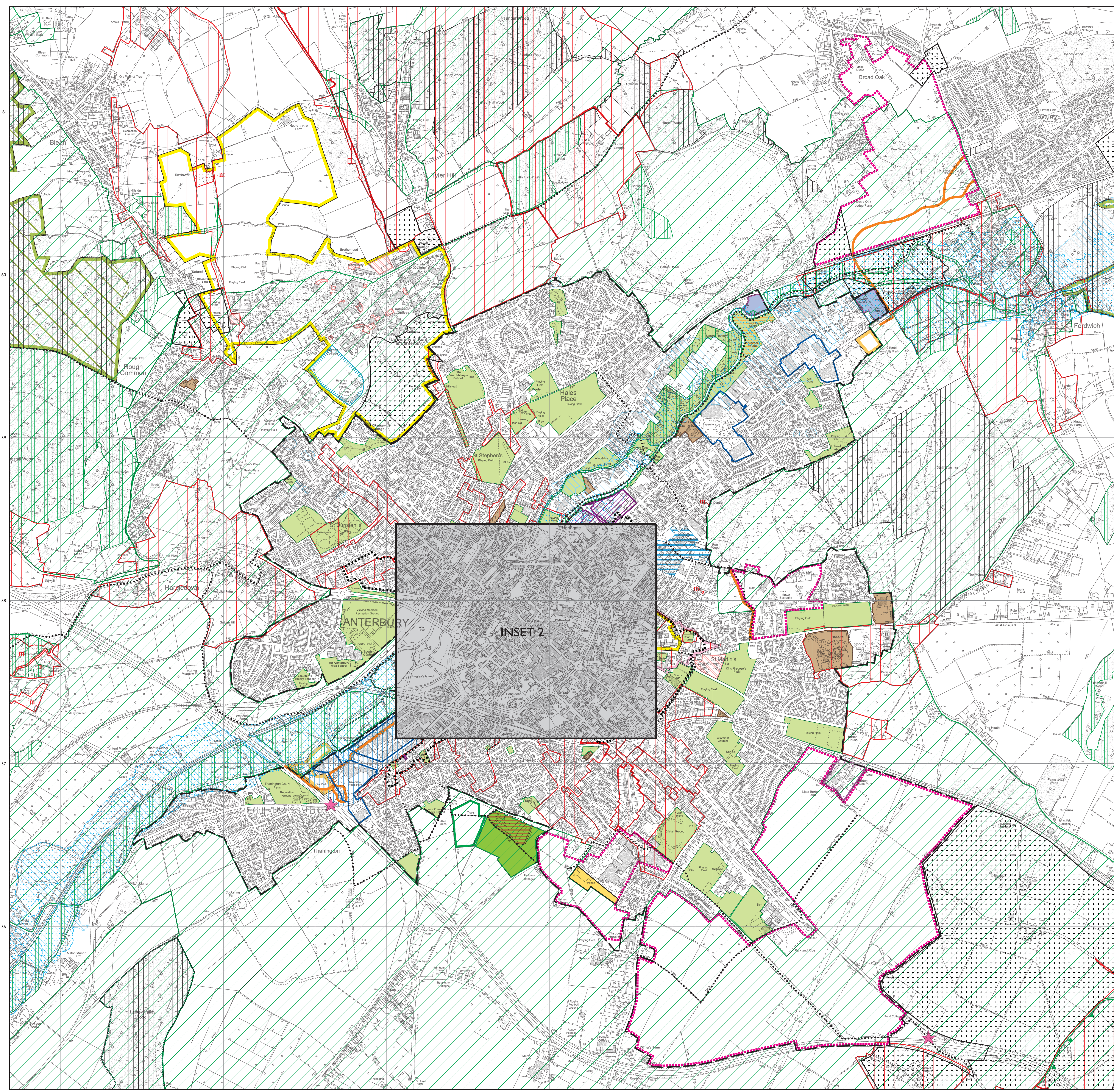
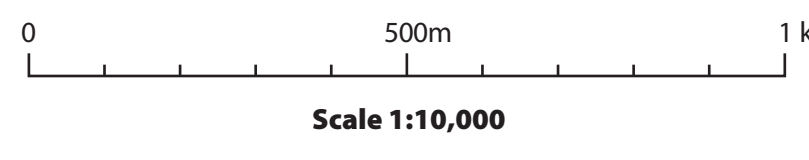
Inset 1: Canterbury

Shown overleaf: District Proposals Map

- BOUNDARIES**
- Boundary of Inset
 - Boundary of Urban Area
- STRATEGY**
- Strategic Allocation SP3
- HOUSING DEVELOPMENT**
- Housing HD1
 - Development Opportunity Site HD1
- ECONOMIC DEVELOPMENT AND EMPLOYMENT**
- Employment EMP1
 - Business Innovation Centre EMP1
 - Protection of Employment Sites EMP4
 - University Site Boundary EMP7
 - Education EMP7, EMP10
- TOWN CENTRES AND LEISURE**
- Retail Node TCL6
 - Wincheap Retail Area TCL7
 - Mixed Use TCL10
- TRANSPORT INFRASTRUCTURE**
- Cycle and Pedestrian Route T2
 - Park and Ride Safeguarding T5-T7
 - A2 Slip Road Improvement T12, T13
 - Road Safeguarding Area T12, T15, T16
- CLIMATE CHANGE**
- Environment Agency Area at Risk of Flooding Zone 2 CC5, CC6
 - Environment Agency Area at Risk of Flooding Zone 3 CC5, CC6
- HISTORIC ENVIRONMENT**
- World Heritage Site HE2
 - World Heritage Buffer Zone HE3
 - Conservation Area HE6
 - Scheduled Ancient Monument HE11
 - Area of Archaeological Importance HE12
- LANDSCAPE AND BIODIVERSITY**
- Kent Downs Area of Outstanding Natural Beauty LB1
 - Area of High Landscape Value LB2
 - International Wildlife Sites (Special Protection Area, RAMSAS, Special Area for Conservation) LB5
 - Site of Special Scientific Interest LB6
 - National Nature Reserve LB6
 - Local Nature Reserve LB7
 - Local Wildlife Sites LB7
 - Regionally Important Geological & Geomorphological Sites LB7
- OPEN SPACE**
- Open Space OS5
 - Green Gap OS6
 - Protection of Existing Open Space OS9
 - Riverside Path OS13, T2
 - Allotments OS14, OS15
- QUALITY OF LIFE**
- Community QL7
 - Health QL9

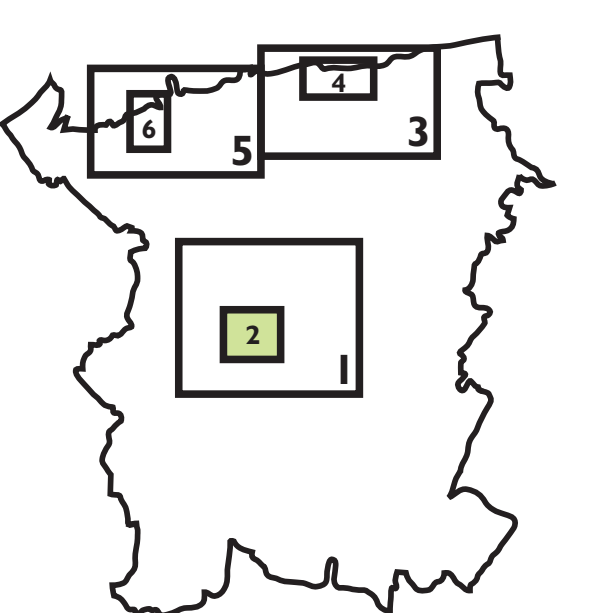
The numbers refer to policies in the Written Statement. In addition, the following policies are relevant to the area covered by the Inset:

- SP1, SP4-SP7, HD2-HD10, EMP2, EMP3, EMP5, EMP6, EMP8, EMP9, EMP12-EMP15, TCL5, TCL6, TCL10, TCL11, T1, T2, T4, T7, T9, T10, T16, T17, TV1-TV4, TV7, TV8, CCI-CC4, CCI1-CC13, DBE1-DBE3, HE1, HE4, HE5, HE7-HE10, HE13, LB4, LB8, LB9, LB10, LB11, LB13, OS1, OS2, OS12, OS14, QL1-QL6, QL8, QL10-QL13.



CANTERBURY DISTRICT LOCAL PLAN

Publication Draft
June 2014



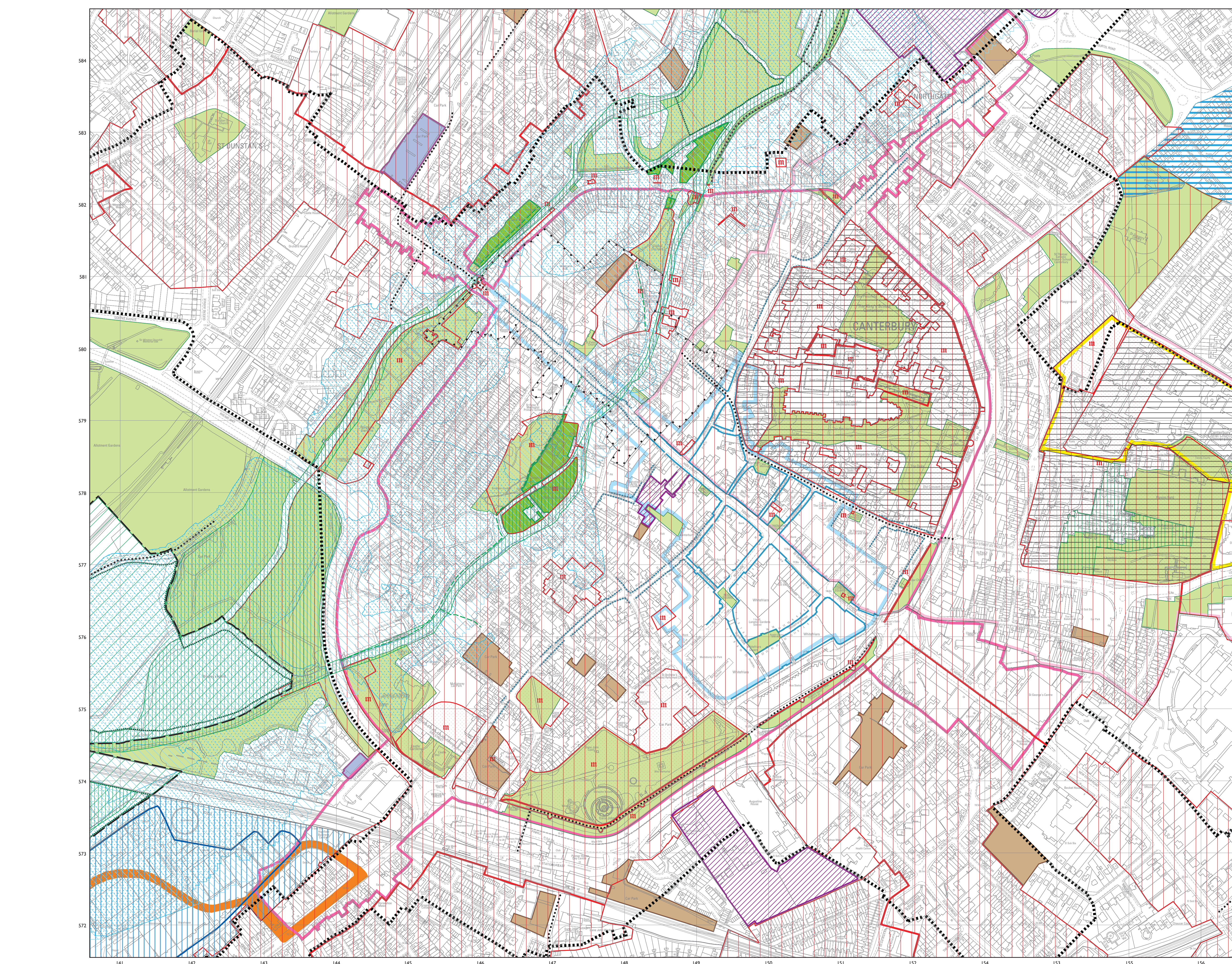
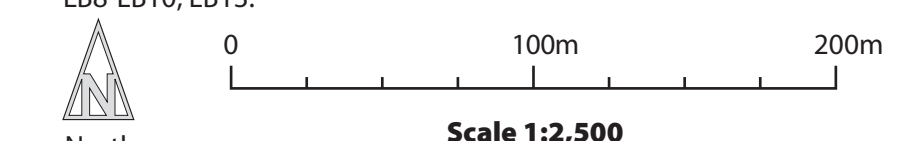
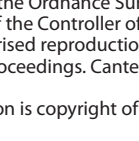
Inset 2: Canterbury City Centre

Shown overleaf: Proposals Map

- BOUNDARIES**
- Boundary of Inset
 - Boundary of Urban Area
- HOUSING DEVELOPMENT**
- Housing HD1
 - Development Opportunity Site HD1
- ECONOMIC DEVELOPMENT AND EMPLOYMENT**
- Employment EMP1
 - University Site Boundary EMP7
- TOWN CENTRES AND LEISURE**
- Canterbury City Centre TCL1
 - Primary Shopping Area TCL2
 - Mixed Shopping Frontage TCL3
 - Cultural Enhancement Area TCL4
 - Retail Node TCL6
 - Wincheap Retail Area TCL7
 - Mixed Use TCL10
- TRANSPORT INFRASTRUCTURE**
- Cycle and Pedestrian Route T2
 - Road Safeguarding Area T11
- CLIMATE CHANGE**
- Environment Agency Area at Risk of Flooding Zone 2 CC5, CC6
 - Environment Agency Area at Risk of Flooding Zone 3 CC5, CC6
- HISTORIC ENVIRONMENT**
- World Heritage Site HE2
 - World Heritage Buffer Zone HE3
 - Conservation Area HE6
 - Scheduled Ancient Monument HE11
 - Area of Archaeological Importance HE12
- LANDSCAPE AND BIODIVERSITY**
- Area of High Landscape Value LB2
 - Local Wildlife Sites LB7
 - Local Nature Reserve LB7
- OPEN SPACE**
- Open Space OS4
 - Protection of Existing Open Space OS9
 - Riverside Path OS12, T2

The numbers refer to policies in the Written Statement. In addition, the following policies are relevant to the area covered by the Inset:

- SP1, SP2, SP4-SP7, HD2, HD6, HD10, EMP2, EMP4, EMP8, EMP9, TCL5, TCL6, TCL8, TCL9, TCL11, TCL12, T1, T4, T9, T10, T17, TV1-TV3, CCI-CC4, CCI1-CC13, DBE1-DBE3, HE1, HE4, HE5, HE7-HE10, LB8-LB10, LB13.



This map is reproduced from the Ordnance Survey material with the permission of Ordnance Survey on behalf of the Controller of the Her Majesty's Stationery Office. © Crown Copyright. Unauthorised reproduction of Ordnance Survey material is prohibited. Additional overlaid information is copyright of Canterbury City Council. Produced by the Cook Hammett & Moll Group.