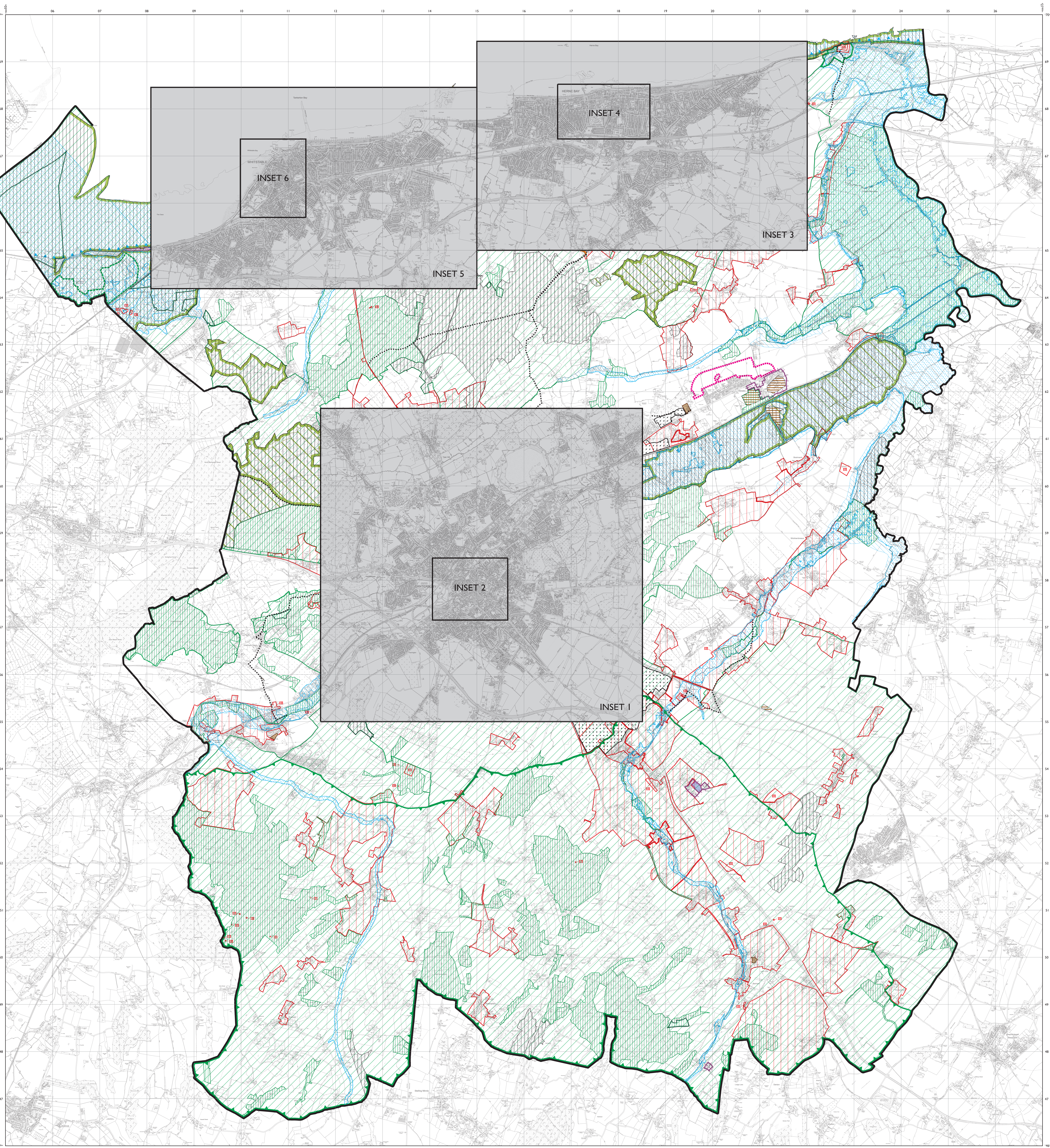


CANTERBURY DISTRICT LOCAL PLAN

Publication Draft
June 2014

District Proposals Map
Shown overleaf: Inset 1 Canterbury
Inset 2 Canterbury City Centre



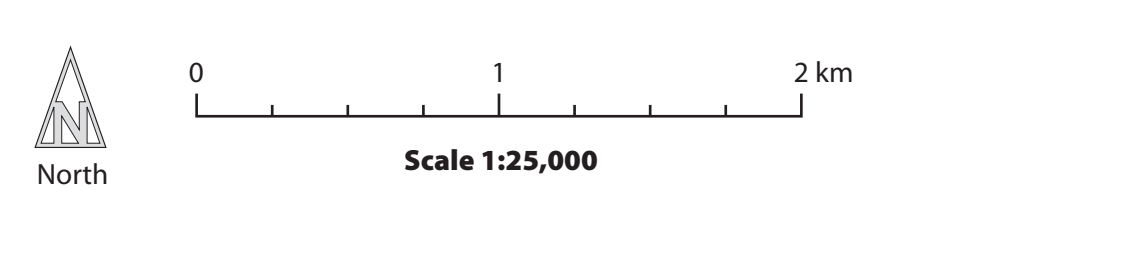
- BOUNDARIES**
- Boundary of Inset
 - District Boundary
- STRATEGY**
- Strategic Allocation SP3
- HOUSING DEVELOPMENT**
- Housing HD1
 - Employment EMP1
 - Protection of Employment Sites EMP4
- TRANSPORT INFRASTRUCTURE**
- Cycle & Pedestrian Route T2

- TOURISM AND VISITOR ECONOMY**
- Recliver TV6
- CLIMATE CHANGE**
- Environment Agency Area at Risk of Flooding Zone 2 CCS, CC6
 - Environment Agency Area at Risk of Flooding Zone 3 CCS, CC6
 - Overtopping Zone CC7
- HISTORIC ENVIRONMENT**
- Conservation Area HE6
 - Scheduled Ancient Monument HE11
- OPEN SPACE**
- Green Gap OS6

- LANDSCAPE AND BIODIVERSITY**
- Kent Downs Area of Outstanding Natural Beauty LB1
 - Area of High Landscape Value LB2
 - Undeveloped Coast LB3
 - International Wildlife Sites (Special Protection Area, RAMSAR, Special Area for Conservation) LBS
 - Site of Special Scientific Interest LB6
 - National Nature Reserve LB6
 - Local Nature Reserve LB7
 - Local Wildlife Sites LB7
 - Proposed Local Nature Reserve LB7
 - Regionally Important Geological & Geomorphological Sites LB7

The numbers refer to policies in the Written Statement. In addition, the following policies are relevant to the area covered by this Proposals Map:

SP1, SP4, SP7, HD2-HD10, EMP2, EMP4, EMP5, EMP6, EMP9, EMP12-EMP15, TCL6, TCL11, T1, T2, T4, T9, T14, T16, T17, TV3, TV4, TV7, TV8, CC1, CC2, CC4, CC8, CC9, CC11-CC13, OBE1-OBE15, HE1, HE3-HE5, HE7-HE10, HE13, LB4, LB8-LB13, OS2, OS9-OS12, OS14, QL1-QL6, QL8, QL10-QL13.



This map is reproduced from the Ordnance Survey material with the permission of Ordnance Survey on behalf of the Controller of Her Majesty's Stationery Office. © Crown Copyright. Unauthorised reproduction infringes Crown copyright and may lead to prosecution or civil proceedings. Canterbury City Council. 1001916/14, 2014. Additional overlaid information is copyright of Canterbury City Council. Produced by the Cook Hammonds & Keil Group.