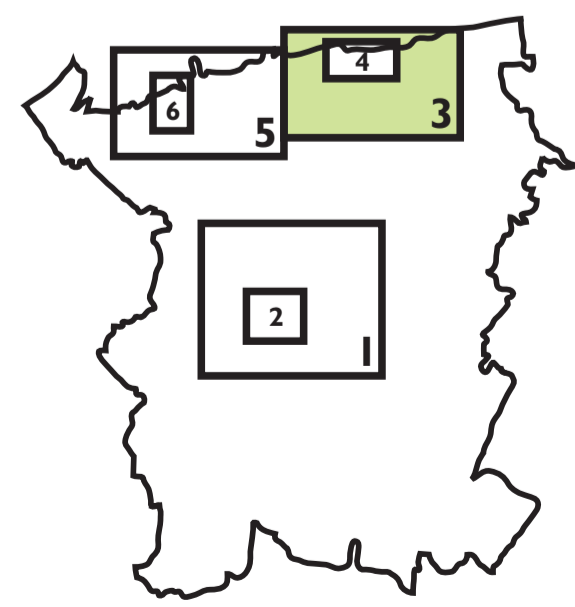


# CANTERBURY DISTRICT LOCAL PLAN

Publication Draft  
June 2014

**Inset 3: Herne Bay**  
Shown overleaf: Inset 6 Whitstable Town Centre



- BOUNDARIES**
- Boundary of Inset
  - Boundary of Urban Area
- STRATEGY**
- Strategic Allocation SP3
- HOUSING DEVELOPMENT**
- Housing HD1
- ECONOMIC DEVELOPMENT AND EMPLOYMENT**
- Employment EMP1
  - Protection of Employment Sites EMP4
- TOWN CENTRES AND LEISURE**
- Local Centre TCL5

- TRANSPORT INFRASTRUCTURE**
- Cycle & Pedestrian Route T2
  - Road Safeguarding Area T13
- CLIMATE CHANGE**
- Environment Agency Area at Risk of Flooding Zone 2 CC5, CC6
  - Environment Agency Area at Risk of Flooding Zone 3 CC5, CC6
  - Coastal Protection Zone CC10
- HISTORIC ENVIRONMENT**
- Conservation Area HE6
- LANDSCAPE AND BIODIVERSITY**
- Area of High Landscape Value LB2
  - Undeveloped Coast LB3

- International Wildlife Sites (Special Protection Area, RAMSAR, Special Area for Conservation) LB5
  - Site of Special Scientific Interest LB6
  - National Nature Reserve LB6
  - Local Nature Reserve LB7
  - Local Wildlife Sites LB7
- OPEN SPACE**
- Open Space OS2
  - Green Gap OS6, OS7
  - Protection of Existing Open Space OS9
- QUALITY OF LIFE**
- Community QL7

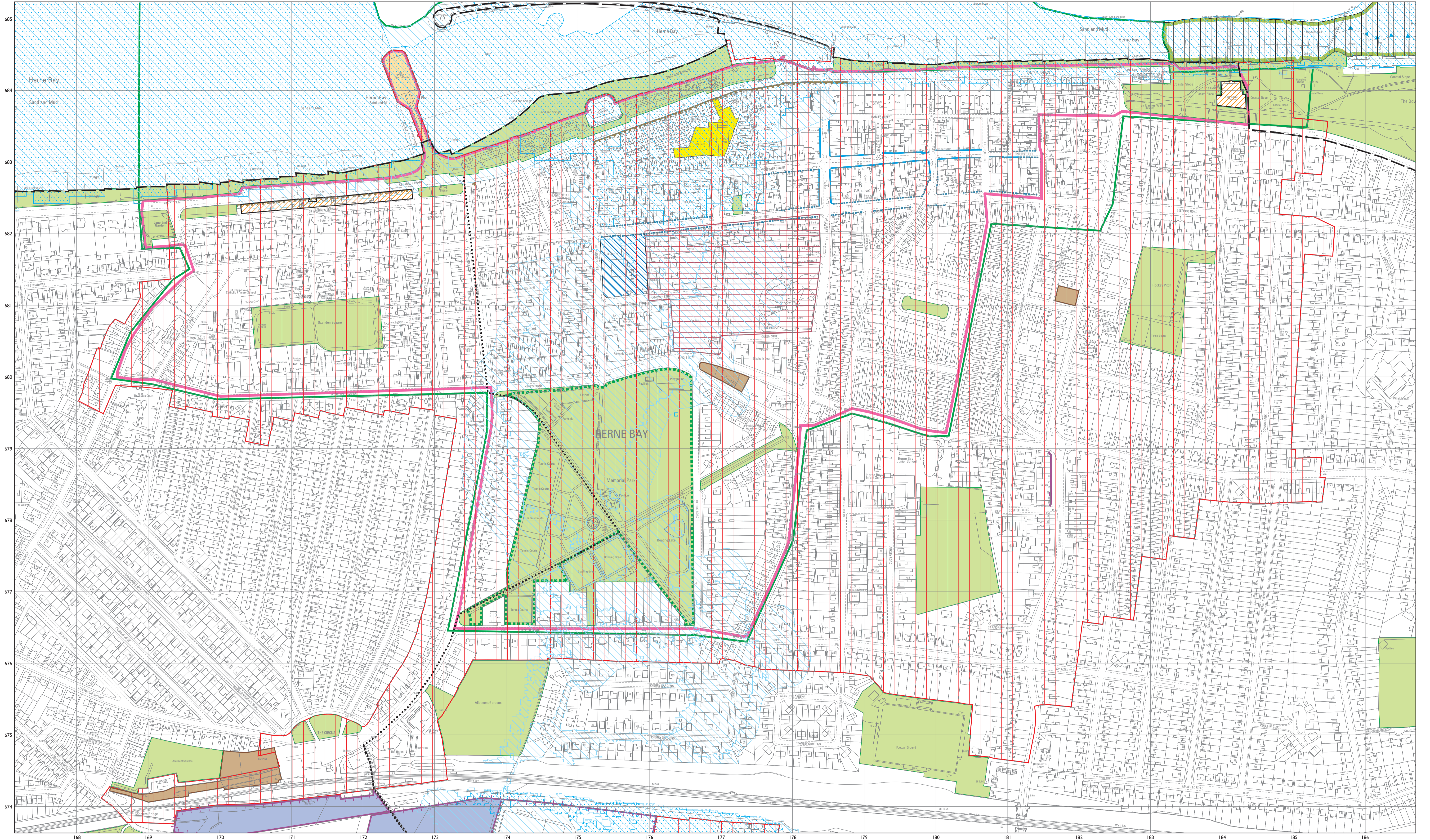
This map is reproduced from the Ordnance Survey material with the permission of Ordnance Survey on behalf of the Controller of Her Majesty's Stationery Office © Crown Copyright. Unauthorised reproduction infringes Crown copyright and may lead to prosecution or civil proceedings. Canterbury City Council. 100019614. 2014.

Additional overlaid information is copyright of Canterbury City Council. Produced by the Cook Hammond & Kell Group.

The numbers refer to policies in the Written Statement. In addition, the following policies are relevant to the area covered by the Inset:

SP1, SP2, SP4-SP7, HD2, HD5, HD8-HD10, EMP2, EMP3-EMP6, EMP9, EMP12-EMP15, TCL6, TCL8, TCL11, T1, T3, T4, T9, T10, T16, T17, TV1-TV5, TV7, CC1-CC4, CC9, CC11-CC13, DBE1-DBE13, HE1, HE4, HE5, HE7-HE13, LB8-LB10, LB13, OS8-OS12, OS15, QL1-QL6, QL8, QL10-QL13.

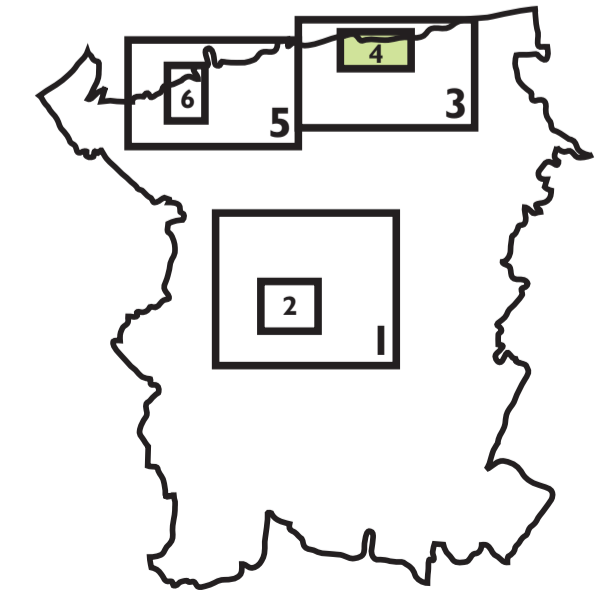
0 500m 1 km  
Scale 1:10,000



This map is reproduced from the Ordnance Survey material with the permission of Ordnance Survey on behalf of the Controller of Her Majesty's Stationery Office © Crown Copyright. Unauthorised reproduction infringes Crown copyright and may lead to prosecution or civil proceedings. Canterbury City Council. 100019614. 2014. Additional overlaid information is copyright of Canterbury City Council. Produced by the Cook Hammond & Kell Group.

# CANTERBURY DISTRICT LOCAL PLAN

Publication Draft  
June 2014

- BOUNDARIES**
  - Boundary of Inset
  - Boundary of Urban Area
- HOUSING DEVELOPMENT**
  - Housing HD1
- ECONOMIC DEVELOPMENT AND EMPLOYMENT**
  - Employment EMP1
  - Protection of Employment Sites EMP4
- TOWN CENTRES AND LEISURE**
  - Herne Bay Town Centre TCL1
  - Primary Shopping Frontage TCL2

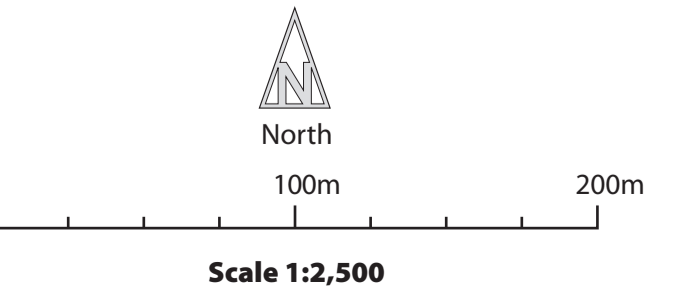
- Mixed Shopping Frontage TCL3
- Local Centre TCL5
- Leisure TCL11
- TRANSPORT INFRASTRUCTURE**
  - Cycle & Pedestrian Route T2
- CLIMATE CHANGE**
  - Environment Agency Area at Risk of Flooding Zone 2 CC5, CC6
  - Environment Agency Area at Risk of Flooding Zone 3 CC5, CC6

- HISTORIC ENVIRONMENT**
  - Conservation Area HE6
- LANDSCAPE AND BIODIVERSITY**
  - Undeveloped Coast LB3
  - International Wildlife Sites (Special Protection Area, RAMSAR, Special Area for Conservation) LBS
  - Site of Special Scientific Interest LB6
- OPEN SPACE**
  - Protection of Existing Open Space OS9

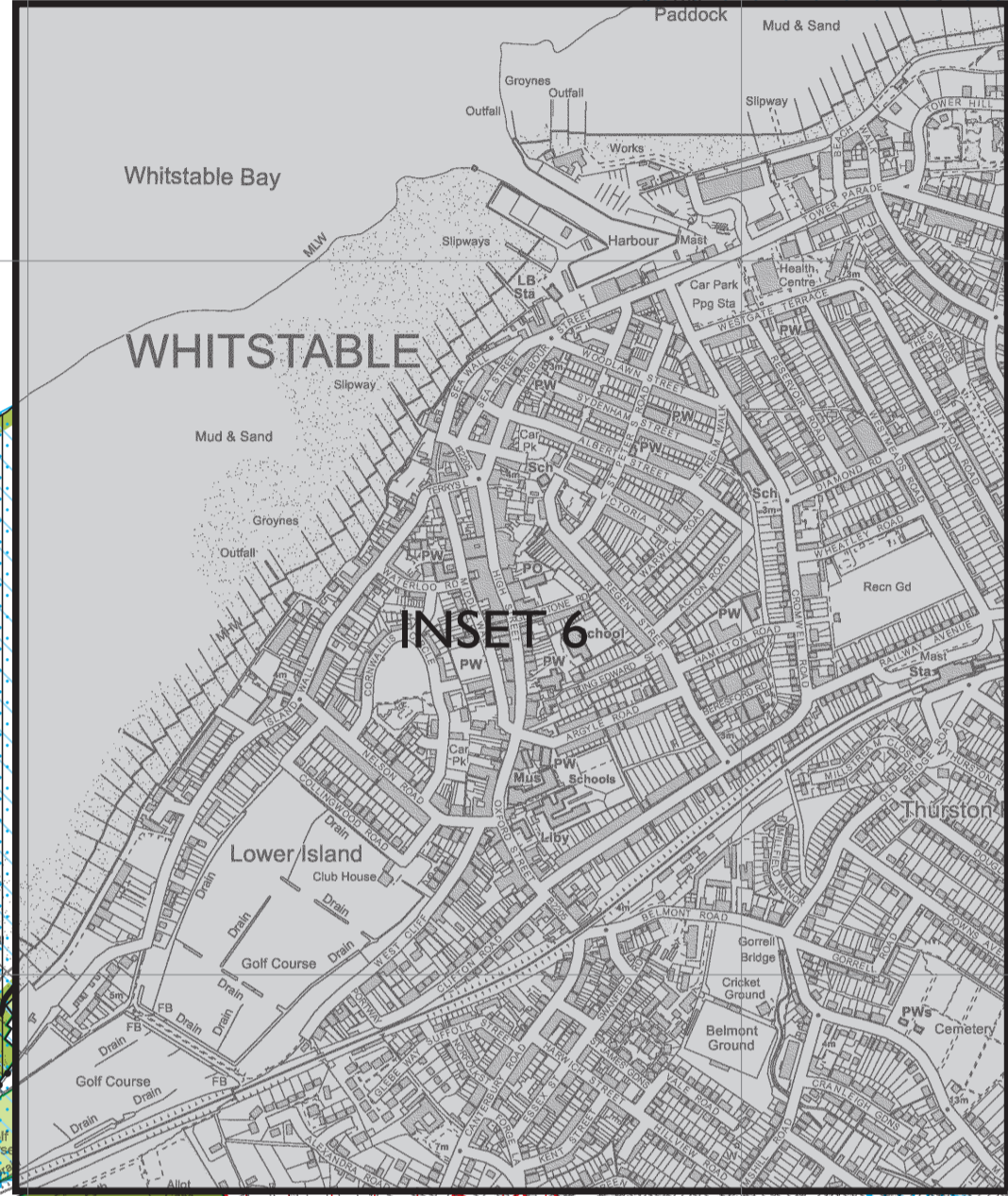
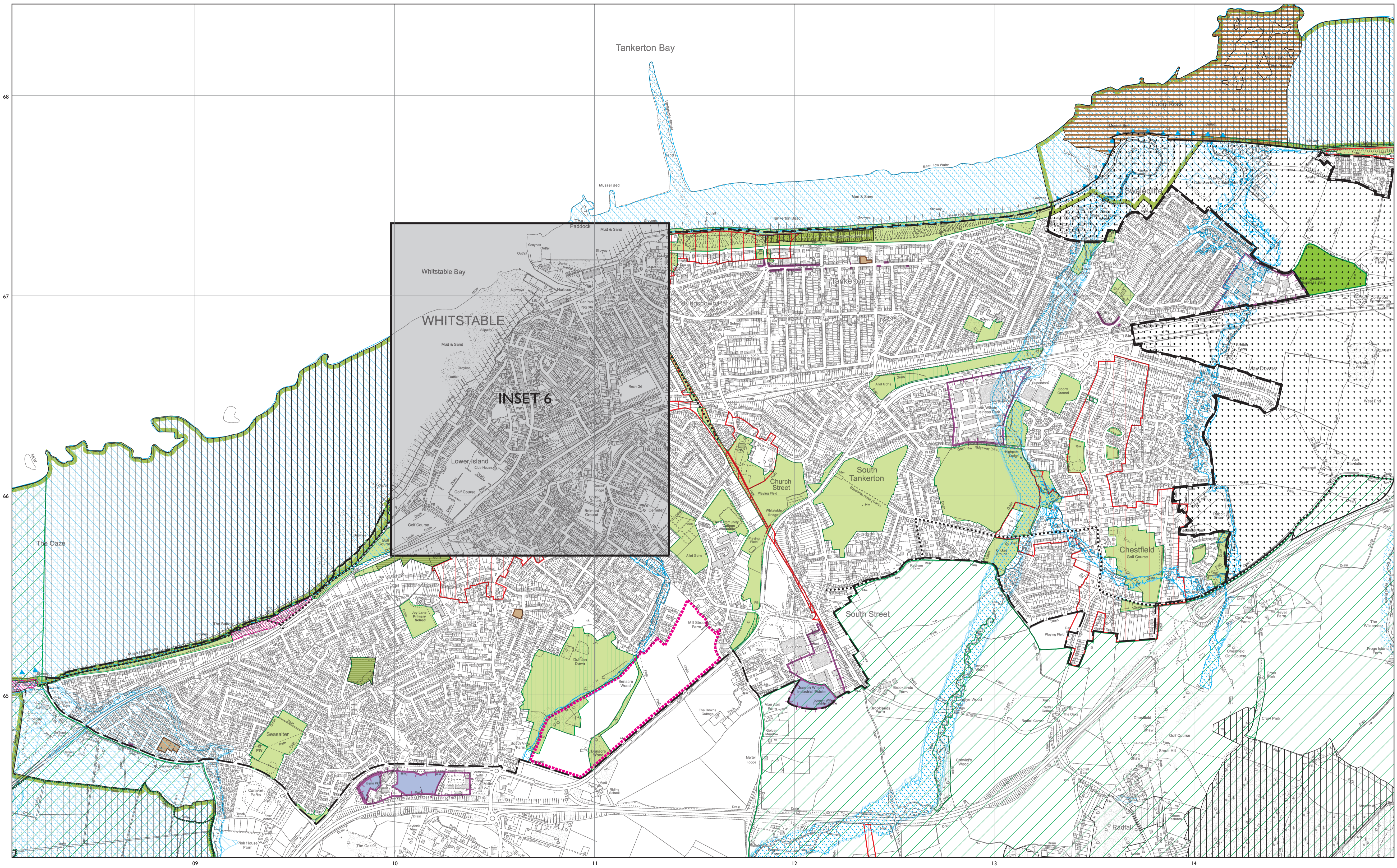
The numbers refer to policies in the Written Statement. In addition, the following policies are relevant to the area covered by the Inset:

SP1, SP2, SP4-SP7, HD2, HD8, HD9, EMP2-EMP6, EMP9, TCL6, TCL8, TCL9, TCL11, TCL12, T1, T3, T4, T9, T10, T17, TV1-TV3, TV5, CC1, CC2, CC3, CC4, CC11-CC13, DBE1-DBE13, HE1, HE4, HE5, HE7-HE13, LB8-LB10, LB13, OS2, OS8-OS12, OS14, OS15, QL1, QL5, QL6, QL8, QL10-QL13.

- AREA ACTION PLAN POLICIES, ADOPTED 2010**
    - Action Area Plan Boundary
    - Central Development Area HB1
    - Beach Street HB2
    - Bus Depot HB3
    - Herne Bay Pier HB11
    - Memorial Park Improvements HB12
    - Seafront Commercial Core HB14
- Other AAP policies that apply to this Inset: HB4 - HB10, HB13, HB15 - HB21



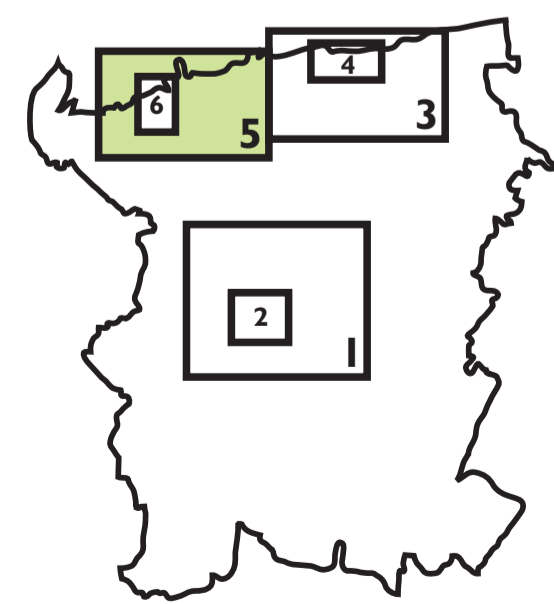
**Inset 4: Herne Bay Town Centre**  
Shown overleaf: Inset 5 Whitstable



# CANTERBURY DISTRICT LOCAL PLAN

Publication Draft  
June 2014

**Inset 5: Whitstable**  
Shown overleaf: Inset 4 Herne Bay Town Centre



### BOUNDARIES

- Boundary of Inset
- Boundary of Urban Area

### STRATEGY

- Strategic Allocations SP3

### HOUSING DEVELOPMENT

- Housing HD1

### ECONOMIC DEVELOPMENT AND EMPLOYMENT

- Employment EMP1
- Protection of Employment Sites EMP4

### TOWN CENTRES AND LEISURE

- Local Centre TCL5

### TRANSPORT INFRASTRUCTURE

- Cycle & Pedestrian Route T2

### CLIMATE CHANGE

- Environment Agency Area at Risk of Flooding Zone 2 CC5, CC6
- Environment Agency Area at Risk of Flooding Zone 3 CC5, CC6
- Overtopping Zone CC7
- Coastal Protection Zone CC10

### LANDSCAPE AND BIODIVERSITY

- Area of High Landscape Value LB2
- Undeveloped Coast LB3
- International Wildlife Sites (Special Protection Area, RAMSAR, Special Area for Conservation) LB5
- Site of Special Scientific Interest LB6
- Regionally Important Geological & Geomorphological Sites LB7
- Local Wildlife Sites LB7
- Local Nature Reserve LB7

### HISTORIC ENVIRONMENT

- Conservation Area HE6

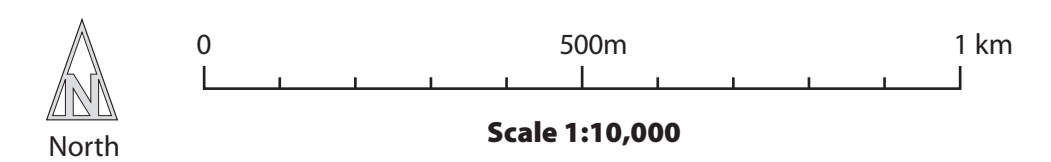
### OPEN SPACE

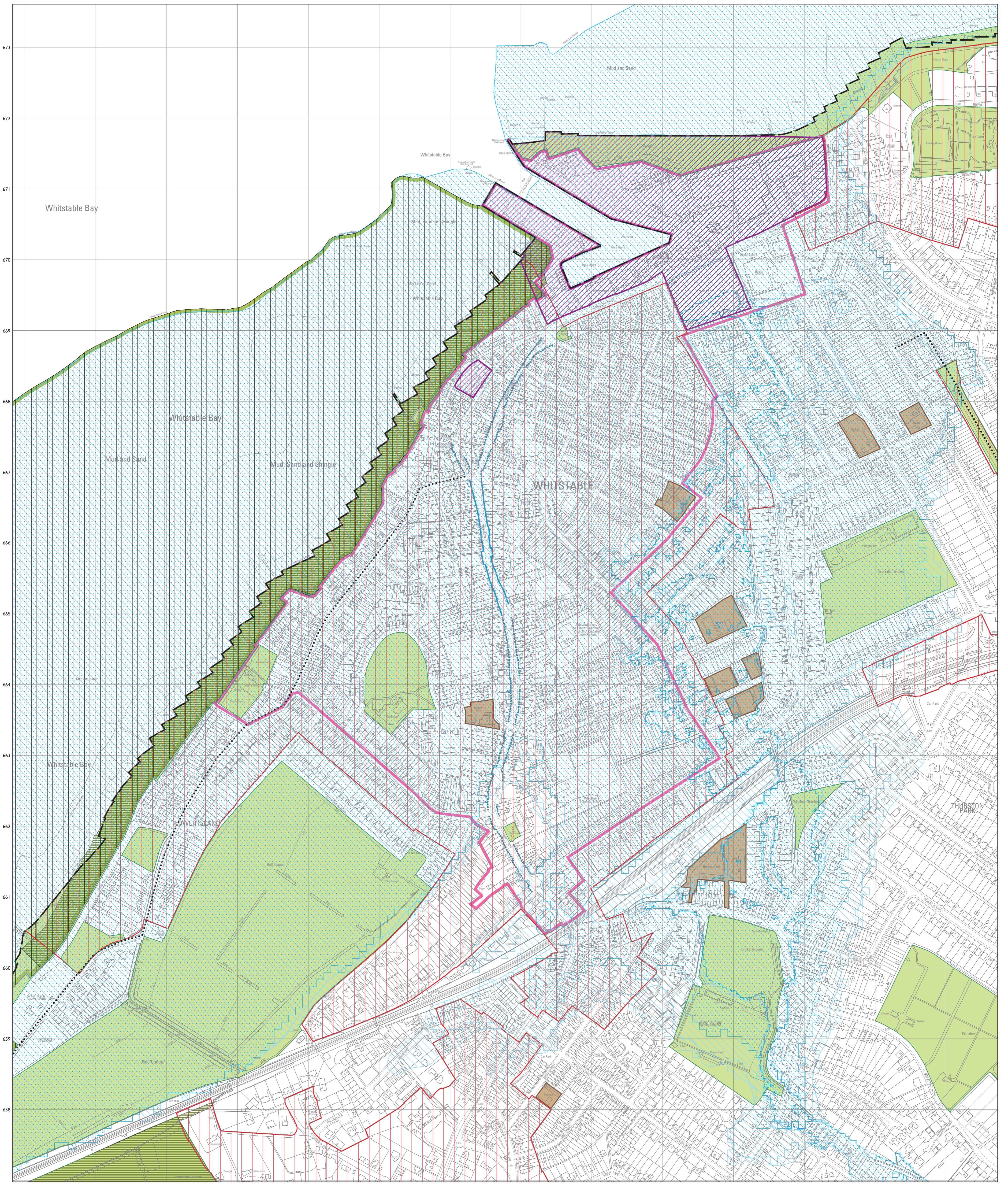
- Open Space OS4
- Green Gap OS6, OS7
- Protection of Existing Open Space OS9
- Local Green Space OS1

This map is reproduced from the Ordnance Survey material with the permission of Ordnance Survey on behalf of the Controller of Her Majesty's Stationery Office © Crown Copyright. Unauthorised reproduction infringes Crown copyright and may lead to prosecution or civil proceedings. Canterbury City Council. 100019614. 2014. Additional overlaid information is copyright of Canterbury City Council. Produced by the Cook Hammond & Kell Group.

The numbers refer to policies in the Written Statement. In addition, the following policies are relevant to the area covered by the Inset:

- SP1, SP2, SP4-SP7.
- HD2, HD4, HD5, HD8-HD10.
- EMP2, EMP3, EMP5, EMP6, EMP9, EMP12-EMP15.
- TCL6, TCL8, TCL11.
- T1, T3, T4, T8, T9, T10, T16, T17.
- TV1-TV5, TV7, TV8.
- CC1-CC4, CC8, CC11-CC13.
- DBE1-DBE13.
- HE1, HE4, HE5, HE7-HE13.
- LB4, LB8-LB13.
- OS2, OS6, OS8-OS12, OS15.
- QL1, QL4-QL6, QL8, QL10-QL13.



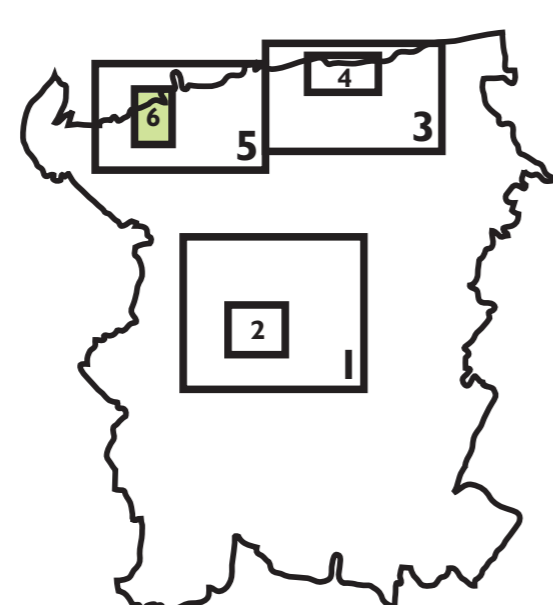


This map is reproduced from the Ordnance Survey material with the permission of Ordnance Survey on behalf of the Controller of Her Majesty's Stationery Office © Crown Copyright. Unauthorised reproduction infringes Crown copyright and may lead to prosecution or civil proceedings. Canterbury City Council, 100019614, 2014.  
 Additional overlaid information is copyright of Canterbury City Council.  
 Produced by the Cook Hammond & Kell Group.

# CANTERBURY DISTRICT LOCAL PLAN

Publication Draft  
 June 2014

**Inset 6: Whitstable Town Centre**  
 Shown overlaid: Inset 3 Herne Bay



## BOUNDARIES

- Boundary of Inset
- Boundary of Urban Area

## HOUSING DEVELOPMENT

- Housing HD1

## TOWN CENTRES AND LEISURE

- Whitstable Town Centre TCL1
- Primary Shopping Frontage TCL2
- Mixed Shopping Frontage TCL3
- Mixed Use TCL10

## TRANSPORT INFRASTRUCTURE

- Cycle & Pedestrian Route T2

## CLIMATE CHANGE

- Environment Agency Area at Risk of Flooding Zone 2 CC5, CC6
- Environment Agency Area at Risk of Flooding Zone 3 CC5, CC6

## HISTORIC ENVIRONMENT

- Conservation Area HE6

## LANDSCAPE AND BIODIVERSITY

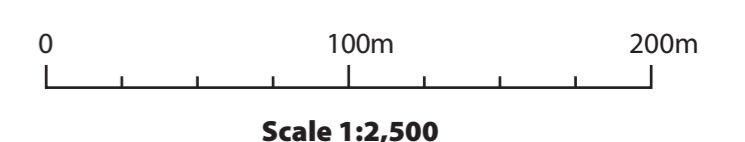
- International Wildlife Sites (Special Protection Area, RAMSAR, Special Area for Conservation) LB5
- Site of Special Scientific Interest LB6

## OPEN SPACE

- Protection of Existing Open Space OS9
- Local Green Space OS1

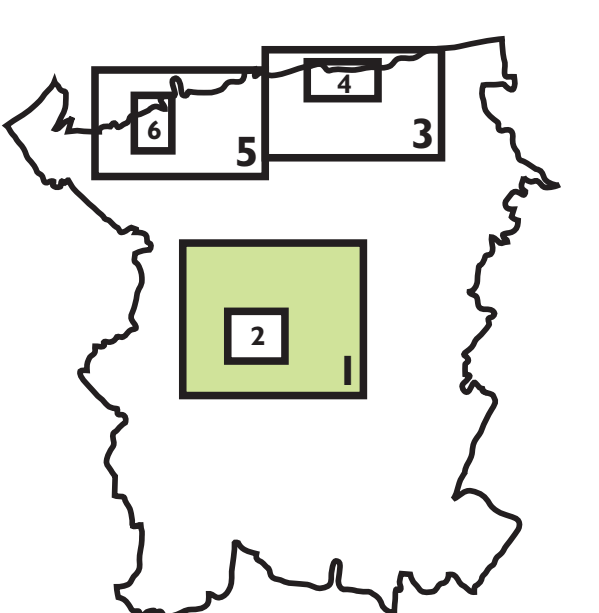
The numbers refer to policies in the Written Statement. In addition, the following policies are relevant to the area covered by the Inset:

- SP1, SP2, SP4-SP7, HD2, HD8, HD9, EMP2, EMP3-EMP6, EMP9, EMP11, TCL6, TCL8, TCL9, TCL11, TCL12, T1, T3, T4, T9, T10, T17, TV1-TV5, CC1, CC2, CC4, CC11-CC13, DBE1-DBE13, HE1, HE4, HE5, HE7-HE13, LB8-LB10, LB12, LB13, OS2, OS9-OS12, OS15, QL1, QL5, QL6, QL8, QL10-QL13.



# CANTERBURY DISTRICT LOCAL PLAN

Publication Draft  
June 2014



## Inset 1: Canterbury

Shown overleaf: District Proposals Map

**BOUNDARIES**  
 - Boundary of Inset  
 - Boundary of Urban Area

**STRATEGY**  
 - Strategic Allocation SP3

**HOUSING DEVELOPMENT**  
 - Housing HD1  
 - Development Opportunity Site HD1

**ECONOMIC DEVELOPMENT AND EMPLOYMENT**  
 - Employment EMP1  
 - Business Innovation Centre EMP1  
 - Protection of Employment Sites EMP4  
 - University Site Boundary EMP7  
 - Education EMP7, EMP10

**TOWN CENTRES AND LEISURE**  
 - Retail Node TCL6  
 - Wincheap Retail Area TCL7  
 - Mixed Use TCL10

**TRANSPORT INFRASTRUCTURE**  
 - Cycle and Pedestrian Route T2  
 - Park and Ride Safeguarding T5-T7  
 - A2 Slip Road Improvement T12, T13  
 - Road Safeguarding Area T12, T15, T16

**CLIMATE CHANGE**  
 - Environment Agency Area at Risk of Flooding Zone 2 CC5, CC6  
 - Environment Agency Area at Risk of Flooding Zone 3 CC5, CC6

**HISTORIC ENVIRONMENT**  
 - World Heritage Site HE2  
 - World Heritage Buffer Zone HE3  
 - Conservation Area HE6  
 - Scheduled Ancient Monument HE11  
 - Area of Archaeological Importance HE12

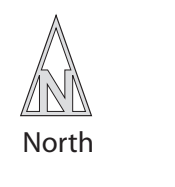
**LANDSCAPE AND BIODIVERSITY**  
 - Kent Downs Area of Outstanding Natural Beauty LB1  
 - Area of High Landscape Value LB2  
 - International Wildlife Sites (Special Protection Area, RAMSAR, Special Area for Conservation) LB5  
 - Site of Special Scientific Interest LB6  
 - National Nature Reserve LB6  
 - Local Nature Reserve LB7  
 - Local Wildlife Sites LB7  
 - Regionally Important Geological & Geomorphological Sites LB7

**OPEN SPACE**  
 - Open Space OS5  
 - Green Gap OS6  
 - Protection of Existing Open Space OS9  
 - Riverside Path OS13, T2  
 - Allotments OS14, OS15

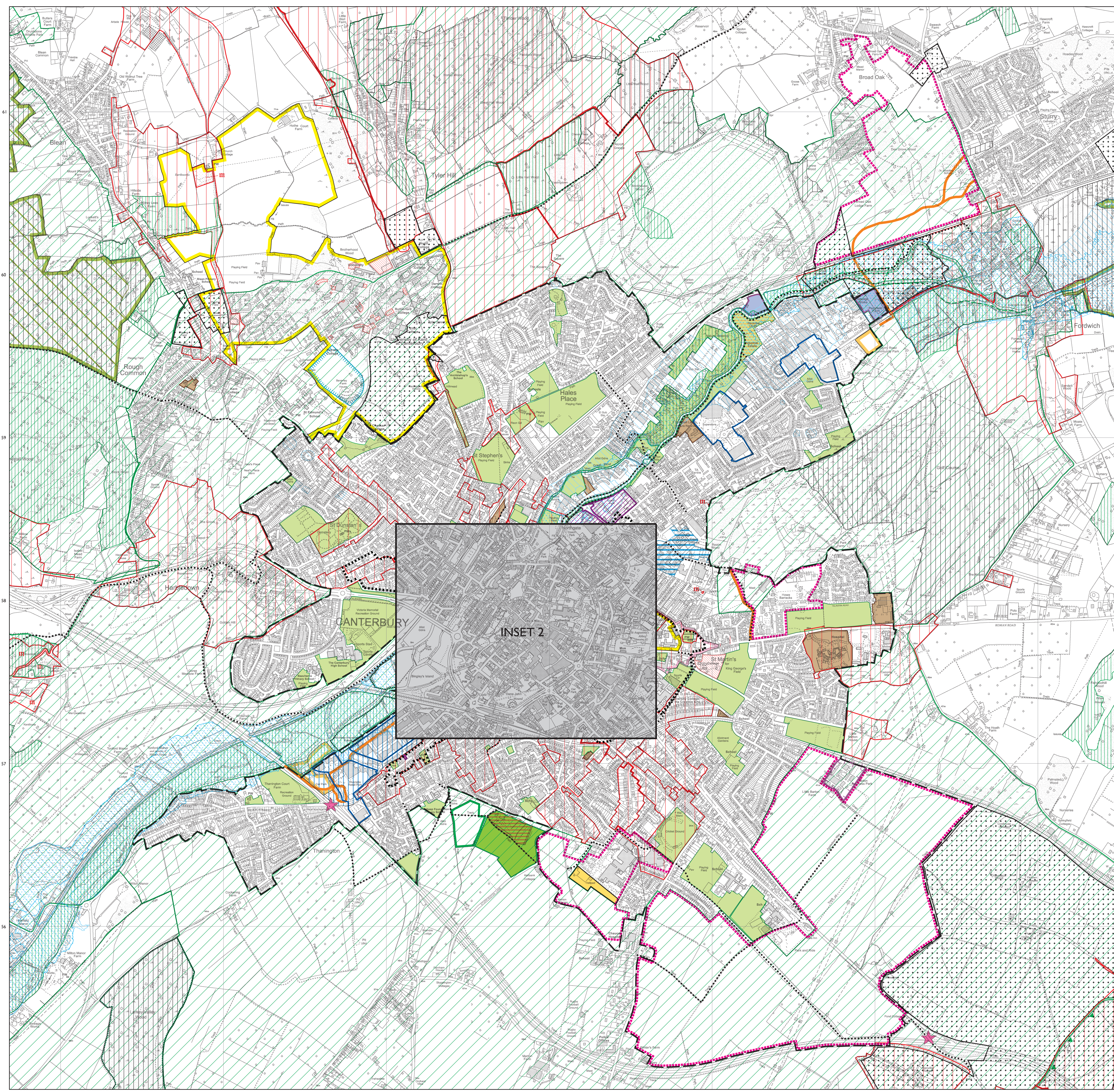
**QUALITY OF LIFE**  
 - Community QL7  
 - Health QL9

The numbers refer to policies in the Written Statement. In addition, the following policies are relevant to the area covered by the Inset:

- SP1, SP4-SP7, HD2-HD10, EMP2, EMP3, EMP5, EMP6, EMP8, EMP9, EMP12-EMP15, TCL5, TCL6, TCL10, TCL11, T1, T2, T4, T7, T9, T10, T16, T17, TV1-TV4, TV7, TV8, CCI-CC4, CCI1-CC13, DBE1-DBE3, HE1, HE4, HE5, HE7-HE10, HE13, LB4, LB8, LB9, LB10, LB11, LB13, OS1, OS2, OS12, OS14, QL1-QL6, QL8, QL10-QL13.

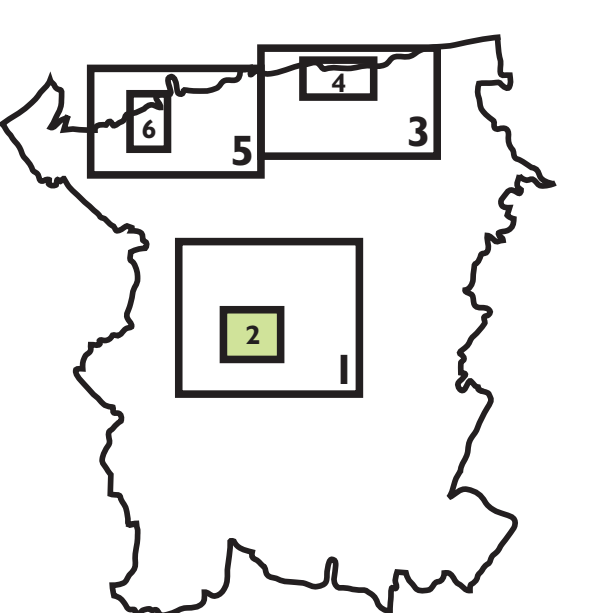


Scale 1:10,000



# CANTERBURY DISTRICT LOCAL PLAN

Publication Draft  
June 2014



## Inset 2: Canterbury City Centre

Shown overleaf: Proposals Map

**BOUNDARIES**  
 - Boundary of Inset  
 - Boundary of Urban Area

**HOUSING DEVELOPMENT**  
 - Housing HD1  
 - Development Opportunity Site HD1

**ECONOMIC DEVELOPMENT AND EMPLOYMENT**  
 - Employment EMP1  
 - University Site Boundary EMP7

**TOWN CENTRES AND LEISURE**  
 - Canterbury City Centre TCL1  
 - Primary Shopping Area TCL2  
 - Mixed Shopping Frontage TCL3  
 - Cultural Enhancement Area TCL4  
 - Retail Node TCL6  
 - Wincheap Retail Area TCL7  
 - Mixed Use TCL10

**TRANSPORT INFRASTRUCTURE**  
 - Cycle and Pedestrian Route T2  
 - Road Safeguarding Area T11

**CLIMATE CHANGE**  
 - Environment Agency Area at Risk of Flooding Zone 2 CC5, CC6  
 - Environment Agency Area at Risk of Flooding Zone 3 CC5, CC6

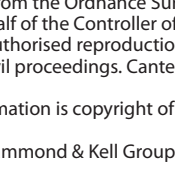
**HISTORIC ENVIRONMENT**  
 - World Heritage Site HE2  
 - World Heritage Buffer Zone HE3  
 - Conservation Area HE6  
 - Scheduled Ancient Monument HE11  
 - Area of Archaeological Importance HE12

**LANDSCAPE AND BIODIVERSITY**  
 - Area of High Landscape Value LB2  
 - Local Wildlife Sites LB7  
 - Local Nature Reserve LB7

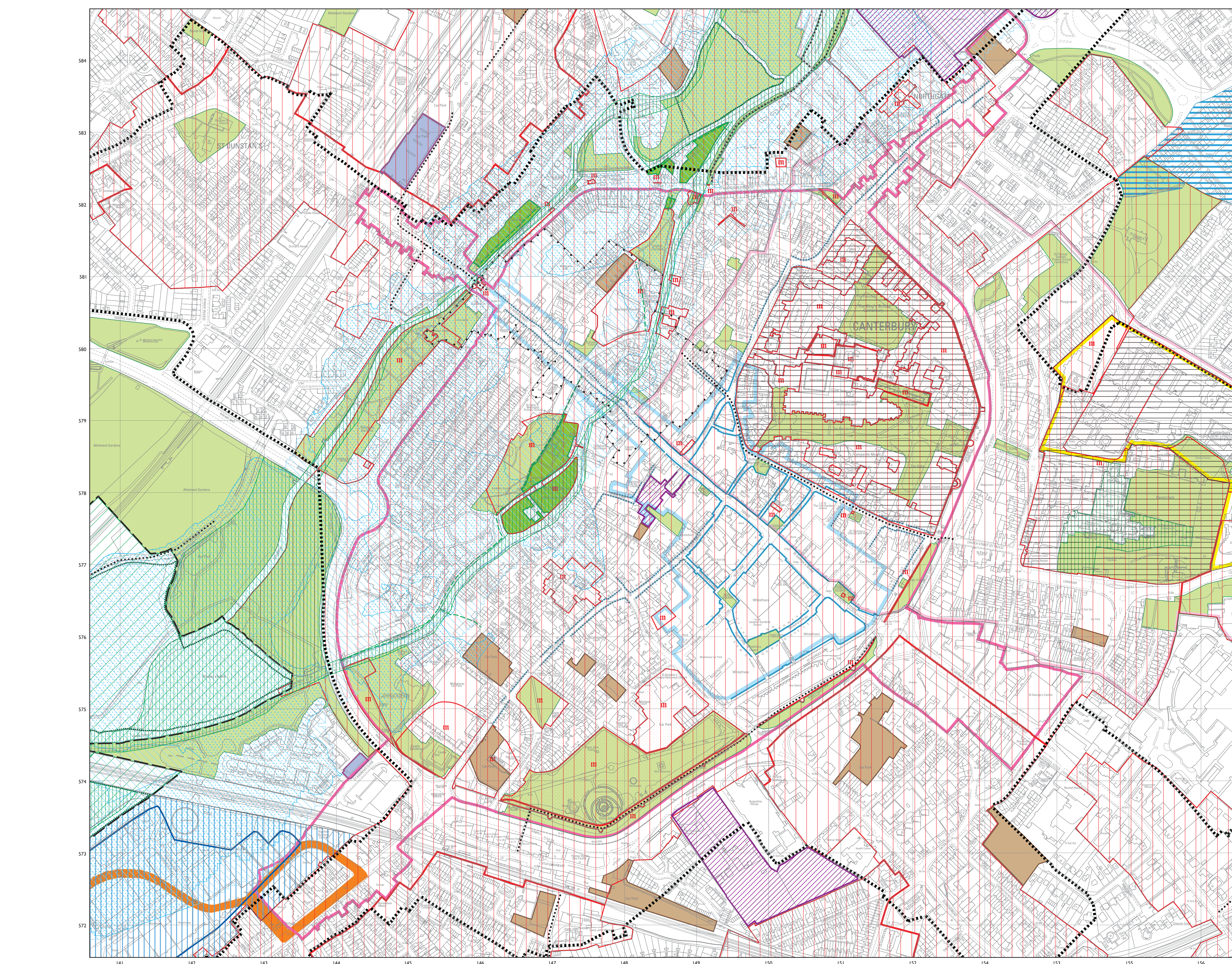
**OPEN SPACE**  
 - Open Space OS4  
 - Protection of Existing Open Space OS9  
 - Riverside Path OS12, T2

The numbers refer to policies in the Written Statement. In addition, the following policies are relevant to the area covered by the Inset:

- SP1, SP2, SP4-SP7, HD2, HD6, HD10, EMP2, EMP6, EMP8, EMP9, TCL5, TCL6, TCL8, TCL9, TCL11, TCL12, T1, T4, T9, T10, T17, TV1-TV3, CCI-CC4, CCI1-CC13, DBE1-DBE3, HE1, HE4, HE5, HE7-HE10, LB8-LB10, LB13.



Scale 1:2,500

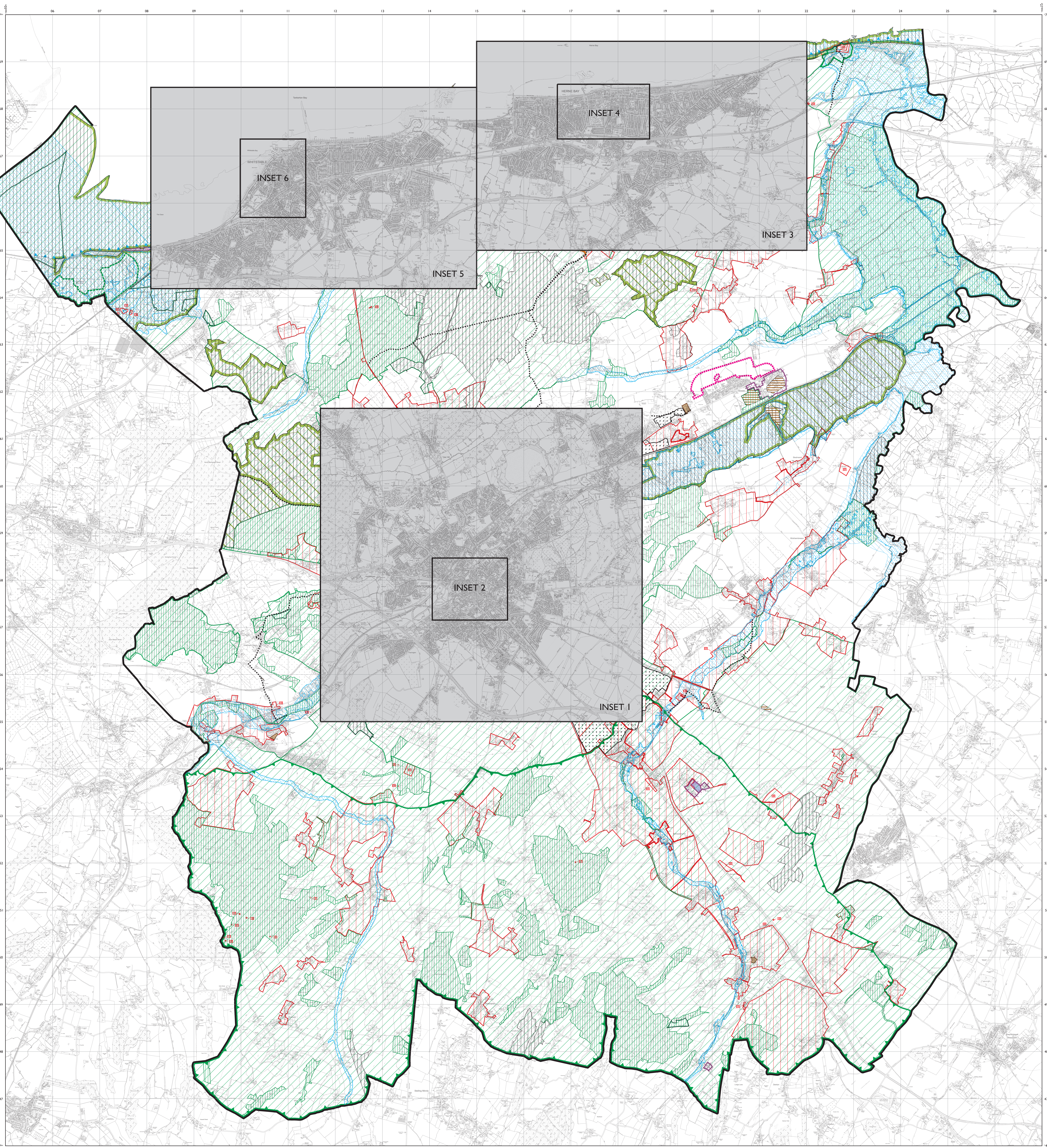


This map is reproduced from the Ordnance Survey material with the permission of Ordnance Survey on behalf of the Controller of the Her Majesty's Stationery Office. © Crown Copyright. Unauthorised reproduction of Ordnance Survey material is prohibited. Additional overlaid information is copyright of Canterbury City Council. Produced by the Cook Hammett & Moll Group.

# CANTERBURY DISTRICT LOCAL PLAN

Publication Draft  
June 2014

**District Proposals Map**  
Shown overleaf: Inset 1 Canterbury  
Inset 2 Canterbury City Centre



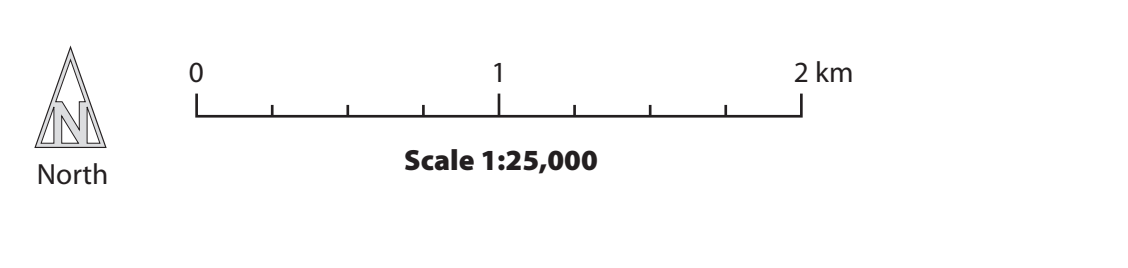
- BOUNDARIES**
- Boundary of Inset
  - District Boundary
- STRATEGY**
- Strategic Allocation SP3
- HOUSING DEVELOPMENT**
- Housing HD1
  - Employment EMP1
  - Protection of Employment Sites EMP4
- TRANSPORT INFRASTRUCTURE**
- Cycle & Pedestrian Route T2

- TOURISM AND VISITOR ECONOMY**
- Recliver TV6
- CLIMATE CHANGE**
- Environment Agency Area at Risk of Flooding Zone 2 CCS, CC6
  - Environment Agency Area at Risk of Flooding Zone 3 CCS, CC6
  - Overtopping Zone CC7
- HISTORIC ENVIRONMENT**
- Conservation Area HE6
  - Scheduled Ancient Monument HE11
- OPEN SPACE**
- Green Gap OS6

- LANDSCAPE AND BIODIVERSITY**
- Kent Downs Area of Outstanding Natural Beauty LB1
  - Area of High Landscape Value LB2
  - Undeveloped Coast LB3
  - International Wildlife Sites (Special Protection Area, RAMSAR, Special Area for Conservation) LBS
  - Site of Special Scientific Interest LB6
  - National Nature Reserve LB6
  - Local Nature Reserve LB7
  - Local Wildlife Sites LB7
  - Proposed Local Nature Reserve LB7
  - Regionally Important Geological & Geomorphological Sites LB7

The numbers refer to policies in the Written Statement. In addition, the following policies are relevant to the area covered by this Proposals Map:

SP1, SP4, SP7, HD2-HD10, EMP2, EMP4, EMP5, EMP6, EMP9, EMP12-EMP15, TCL6, TCL11, T1, T2, T4, T9, T14, T16, T17, TV3, TV4, TV7, TV8, CC1, CC2, CC4, CC8, CC9, CC11-CC13, OBE1-OBE15, HE1, HE3-HE5, HE7-HE10, HE13, LB4, LB8-LB13, OS2, OS9-OS12, OS14, QL1-QL6, QL8, QL10-QL13.



The map is reproduced from the Ordnance Survey material with the permission of Ordnance Survey on behalf of the Controller of Her Majesty's Stationery Office. © Crown Copyright. Unauthorised reproduction infringes Crown copyright and may lead to prosecution or civil proceedings. Canterbury City Council. 100191614\_2014. Produced by the Cook Hammonds & Keil Group.