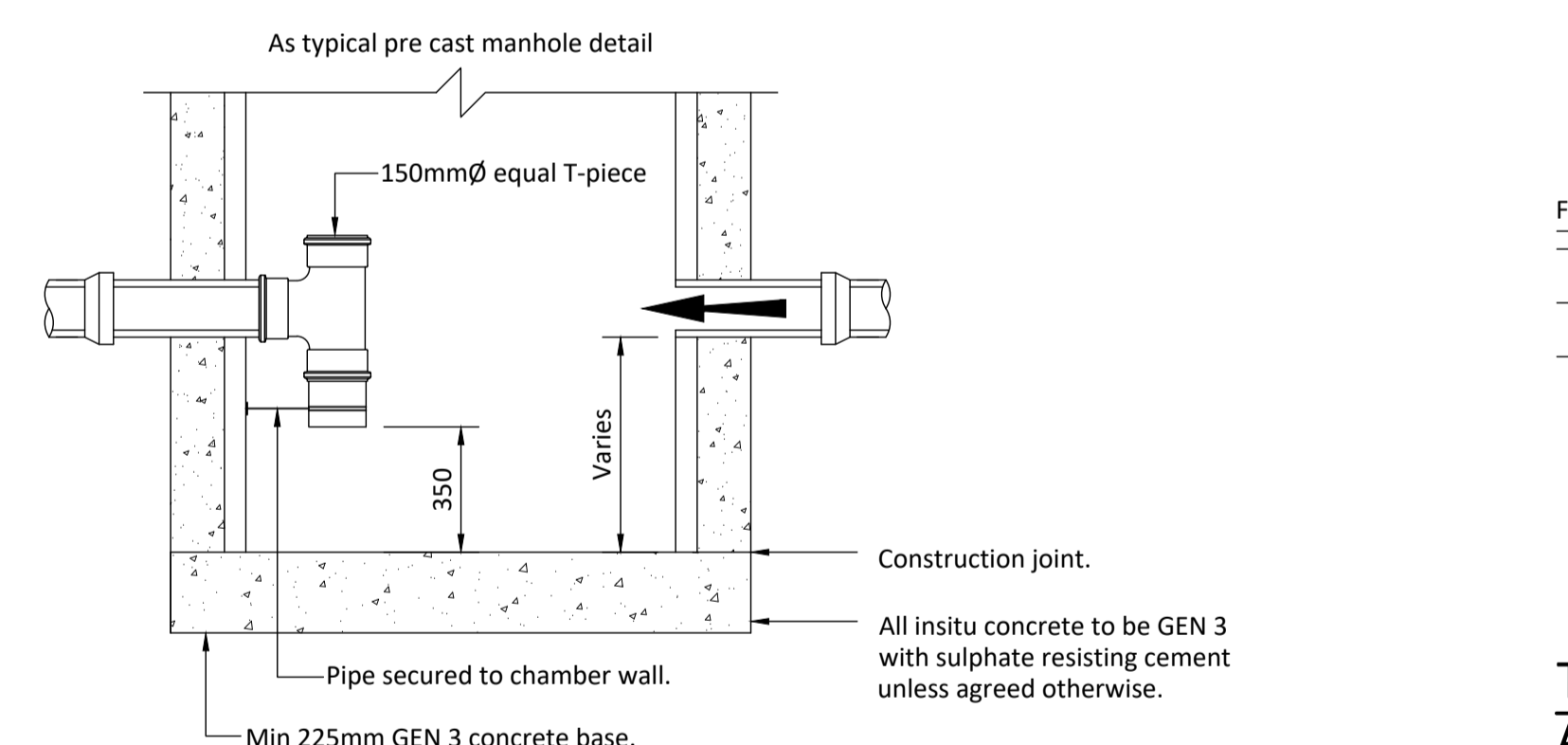
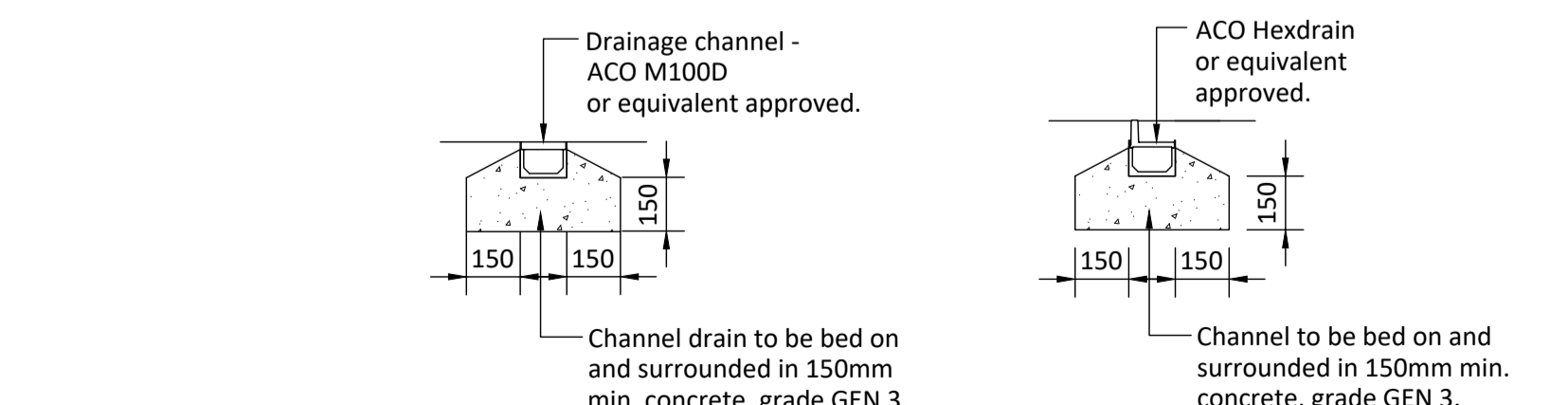


Typical Pre Cast Manhole Detail
Max Depth from Ground Level to Soffit of 3.0m
Scale 1-20

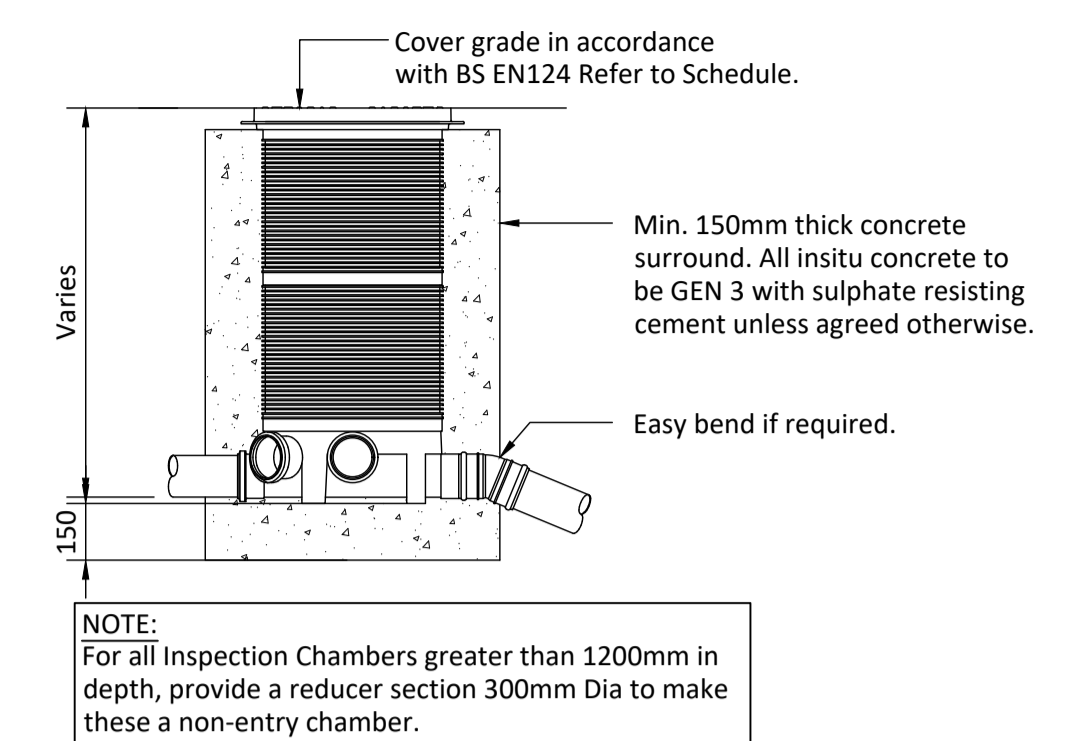


Typical Catchpit Detail
Max 150mm ϕ Pipework
Scale 1-20

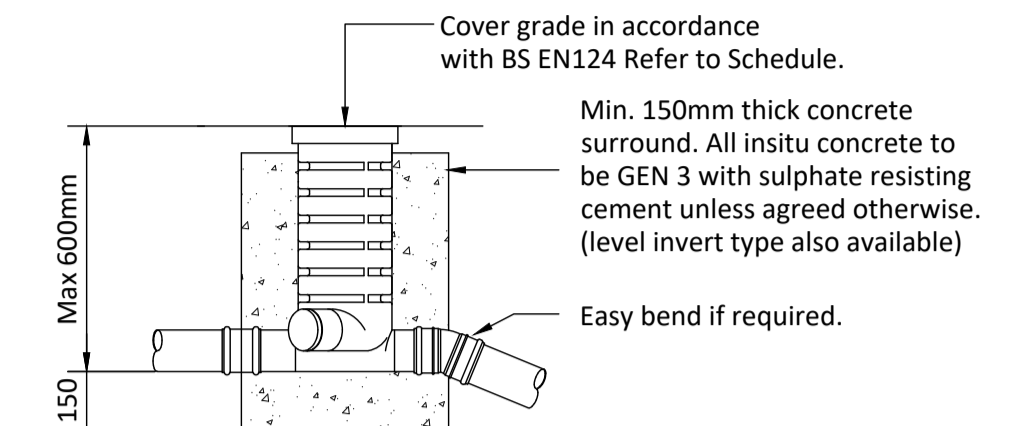


Typical Channel Drain
ACO M100D
Scale 1-20

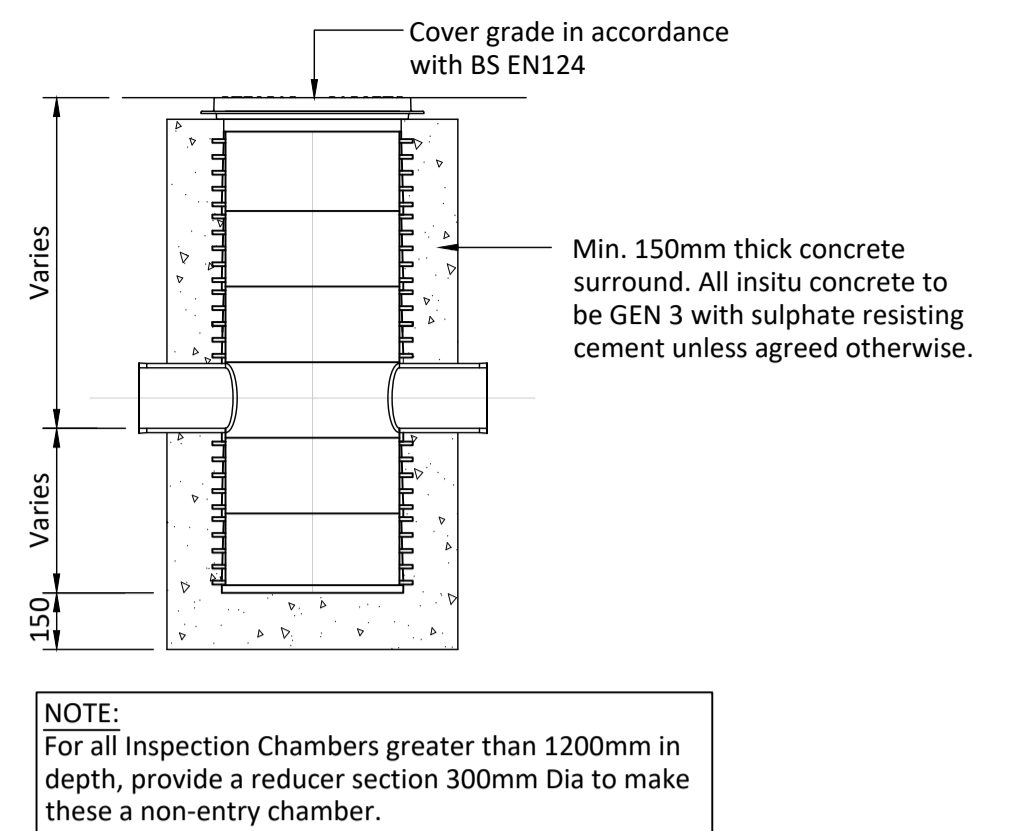
Typical Threshold Drain
Aco Hexdrain or equivalent approved
Scale 1-20



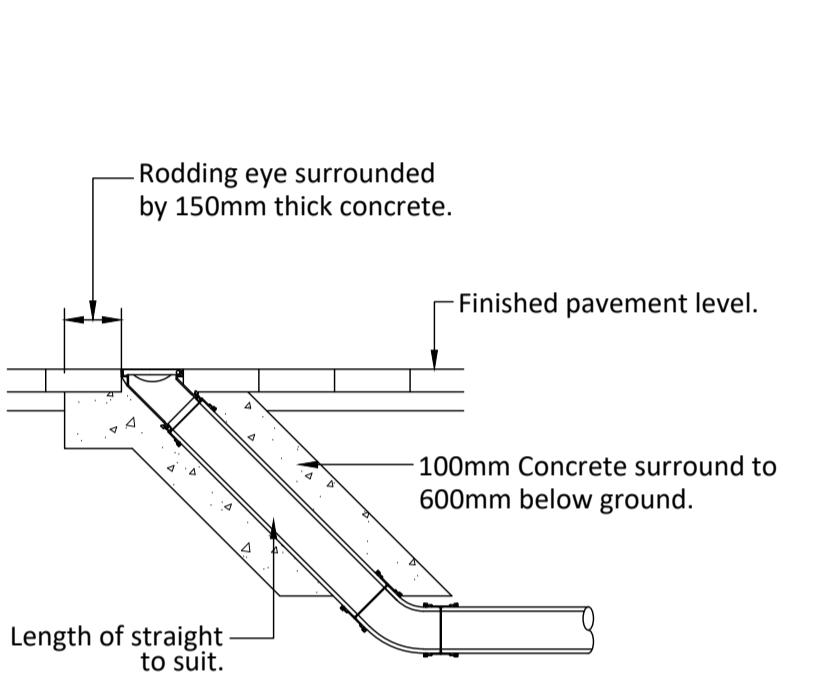
Typical Inspection Chamber
450mm ϕ Polypropylene (SfA type 3)
Scale 1-20



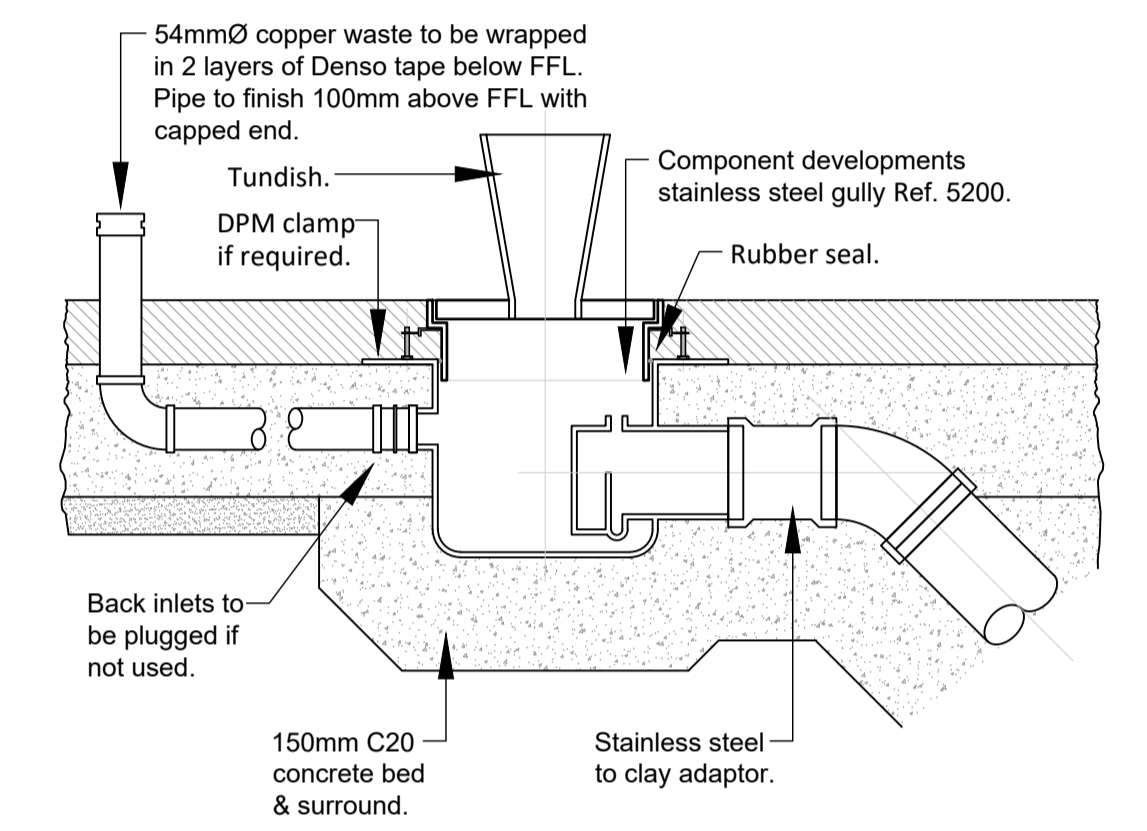
Typical Inspection Chamber
250mm ϕ Polypropylene (non-adoptable) (SfA type 4)
Scale 1-20



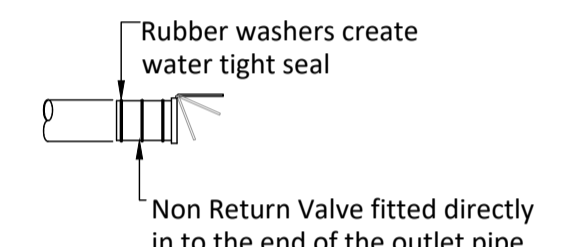
Typical Inspection Chamber with Catchpit
450mm ϕ Polypropylene
Scale 1-20



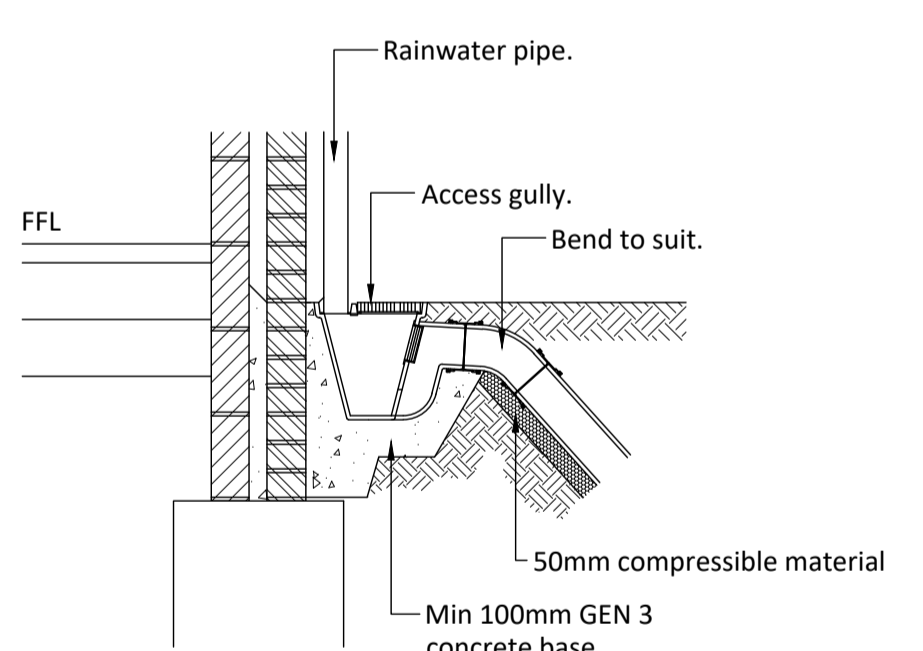
Typical Rodding Eye Access
Scale 1-20



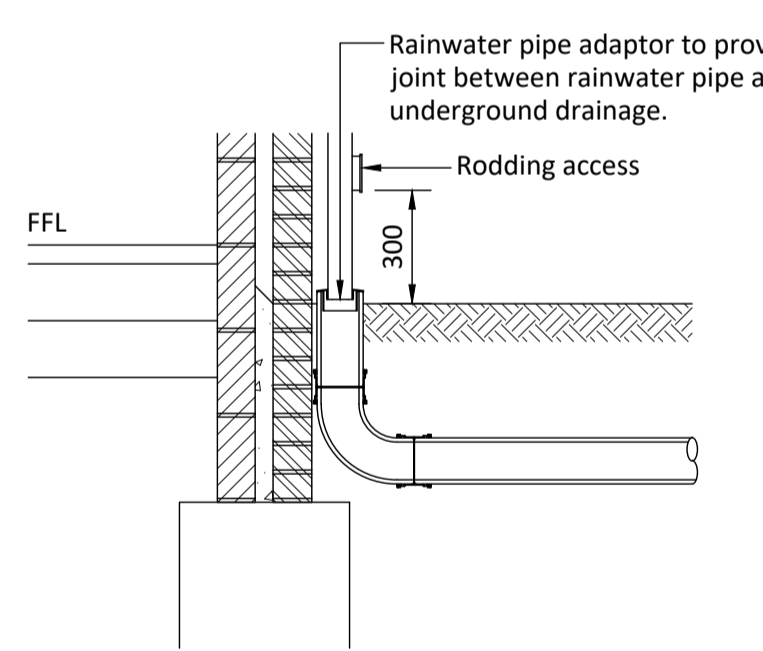
Typical Open Top Gully With Tundish
Scale 1-10



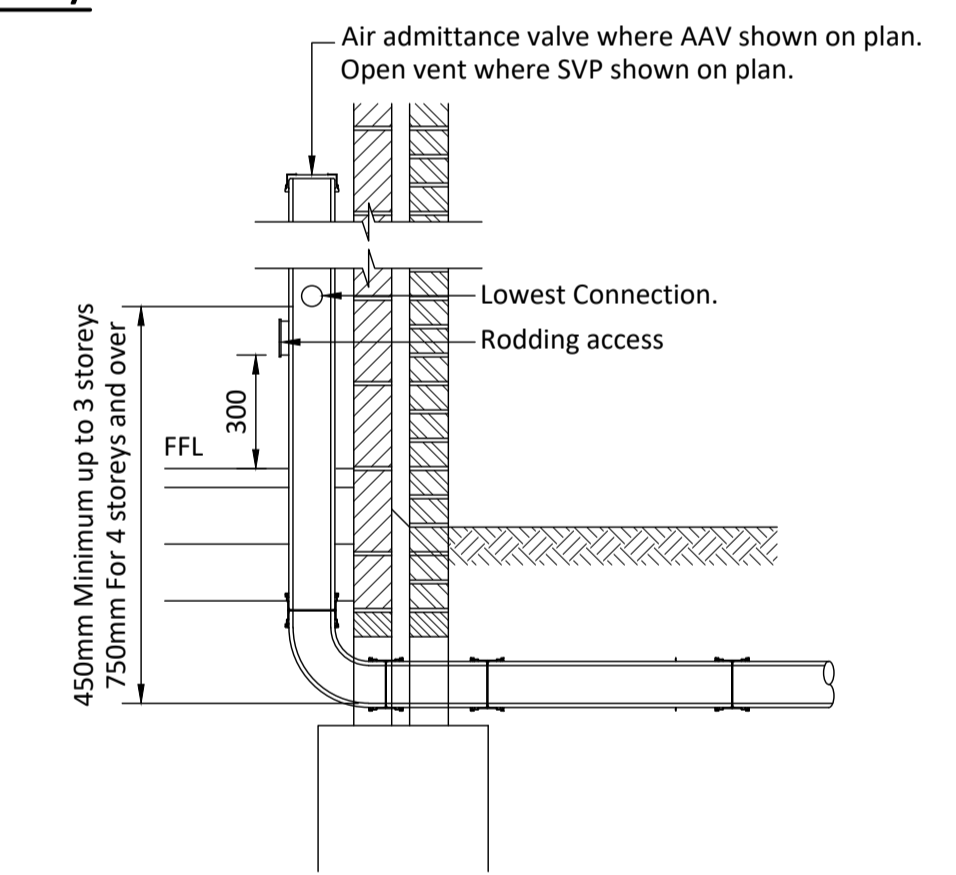
Typical Non Return Valve
Up to 150mm ϕ By Watertight International or equivalent
Scale 1-20



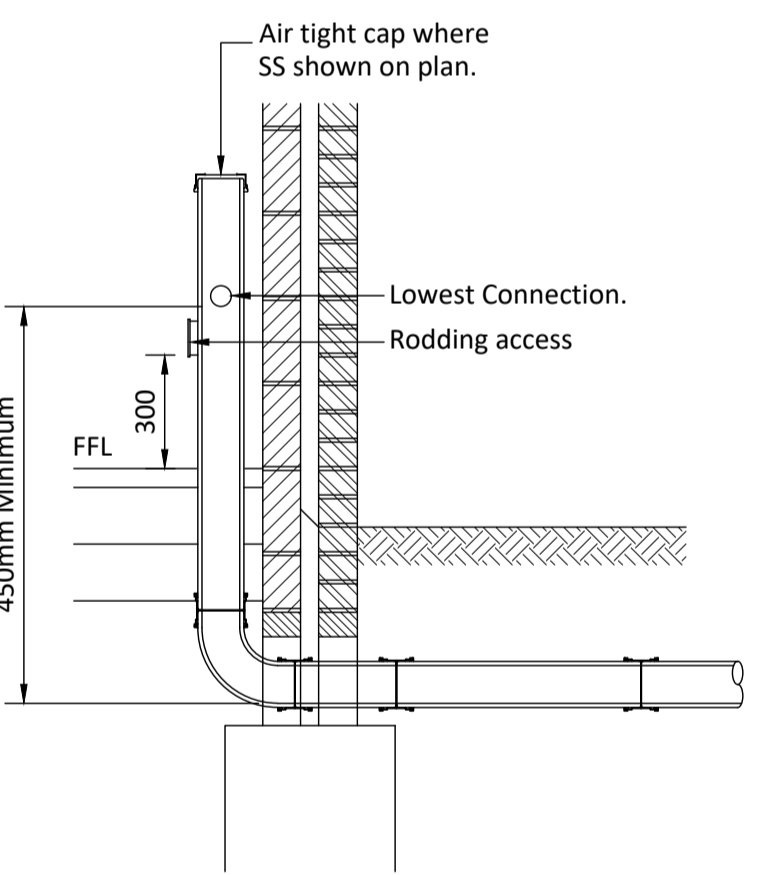
Typical Rainwater Pipe Arrangement (Type A)
To Architect's Specification
Scale 1-20



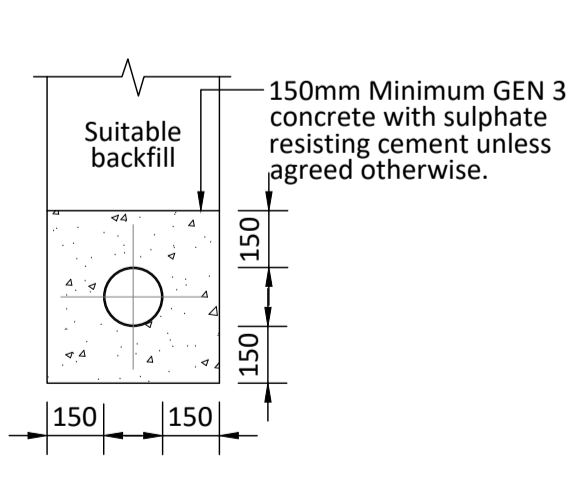
Typical Rainwater Pipe Arrangement (Type B)
To Architect's Specification
Scale 1-20



Typical Soil and Vent Pipe Arrangement
To Architect's Specification
Scale 1-20

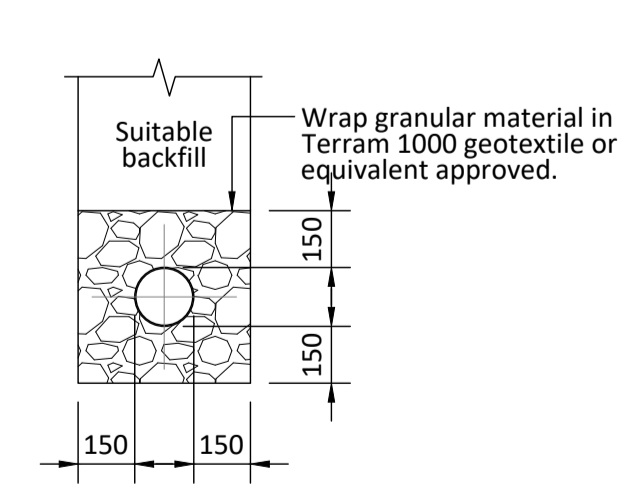


Typical Stub Stack Arrangement
To Architect's Specification
Scale 1-20



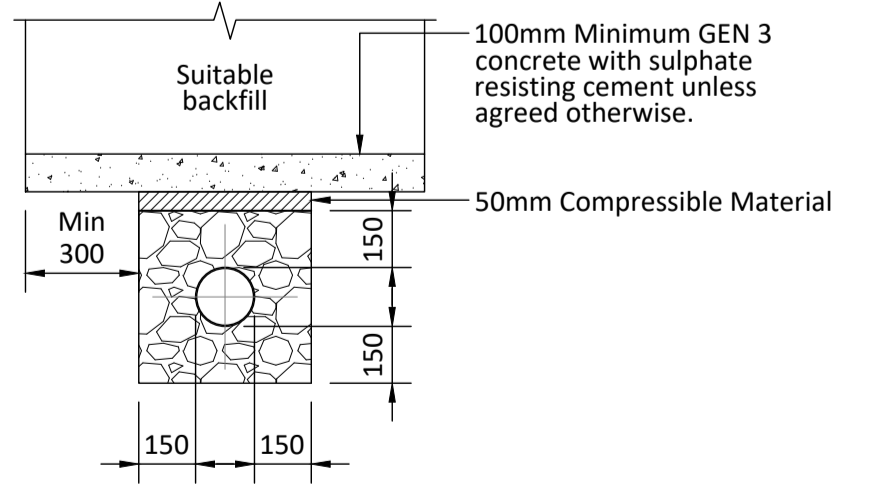
Minimum bed and surround thickness shall be the greater of 150mm or pipe OD / 4

Type Z Bedding
Concrete Bed and Surround (Depth to soffit <1.2m)
Scale 1-20



Minimum bed and surround thickness shall be the greater of 150mm or pipe OD / 4

Type S Bedding
Granular Bed and Surround (Depth to soffit >1.2m)
Scale 1-20



Minimum bed and surround thickness shall be the greater of 150mm or pipe OD / 4

Pipe Protection
Concrete Slab Over (Depth to soffit <0.6m)
Scale 1-20

DO NOT SCALE THIS DRAWING. ALL SETTING OUT TO ARCHITECT'S DETAILS AND DRAWINGS

THIS DRAWING IS TO BE READ IN CONJUNCTION WITH ALL OTHER RELEVANT DRAWING ISSUES AND THE SPECIFICATION.

- All building materials, components and workmanship to comply with the appropriate public health acts, building regulations, british standards and codes of practice and the appropriate manufacturer's recommendations.
- For all specialist work see relevant drawings.
- Any discrepancies, errors or omissions to be reported to the project co-ordinator for further instructions before commencement of works.
- The Engineer is not responsible for dimensions, except where shown on his drawings. All setting out information, dimensions, etc, shall be calculated from the Architect's drawings.

PO2	Tundish Gully added.	JEM/MIF	19.08.20
PO1	Preliminary Issue.	JEM/MIF	24.04.20
Rev	Amendment	Drn	Chk Date

considine
civil + structural engineers

25 Hollingworth Court, Turkey Mill
Ashford Road, Maidstone, Kent ME14 5PP
t: 01622 919918 e: info@considine.co.uk
www.considine.co.uk

Client:
ABBOTT CONSTRUCTION LTD.

Project:
**ST PETER'S STREET & POUND LANE
CANTERBURY, KENT
CT1 2BL**

Drawing Title:
**PRIVATE DRAINAGE DETAILS
SHEET 1 OF 2**

considine ref	drawn by	date	drawing scales	original paper size
3554	JEM	APR 20	1:20 @ A1	A1

drawing reference :	originator	volume	level	type	role	number
3554 - CON - 00 - XX - DR - C - 1530						

status :	status description :
SO	SUITABLE FOR INFORMATION
revision :	revision status :
P02	PRELIMINARY

This document is © Considine Limited