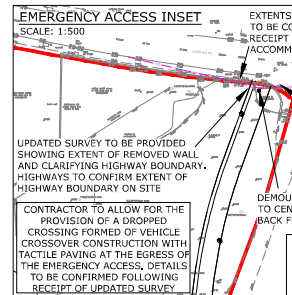


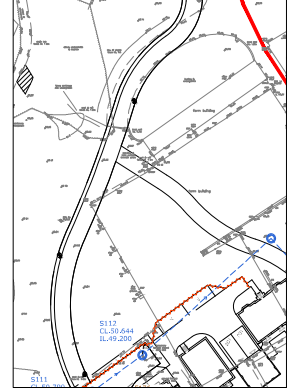
CONTRACTOR TO ENSURE THEY REFER TO THE ARBORCULTURAL IMPACT ASSESSMENT AND THE ARBORCULTURAL METHOD STATEMENT PREPARED BY LOYD BONE LTD PRIOR TO UNDERTAKING ANY CONSTRUCTION WORKS TO ENSURE THAT THEY CO-ORDINATE WITH THE ARBORCULTURIST FOR ANY SUPERVISION THAT THEY MAY NEED TO PROVIDE DURING THE WORKS

ALL CHAMBER COVERS AND GULLY GRATINGS WITHIN THE CARRIAGEWAY SHALL ACCORD WITH THE REQUIREMENTS OF CD534 AND ACHIEVE THE REQUIRED SKID RESISTANCE

HIGHWAY GRASS VERGES ARE TO BE LEFT IN A MAINTAINABLE CONDITION WITH NO DEBRIS OR STONES LEFT ON THE GRASS SURFACE AND TURF TO BE ESTABLISHED



CONTRACTOR TO ALLOW FOR THE PROVISION OF A DROPPED KERB CROSSING FORMED BY VEHICLE CROSSOVER CONSTRUCTION WITH TACTILE PAVING AT THE GROSS OF THE EMERGENCY ACCESS, DETAILS TO BE CONFIRMED FOLLOWING RECEIPT OF UPDATED SURVEY

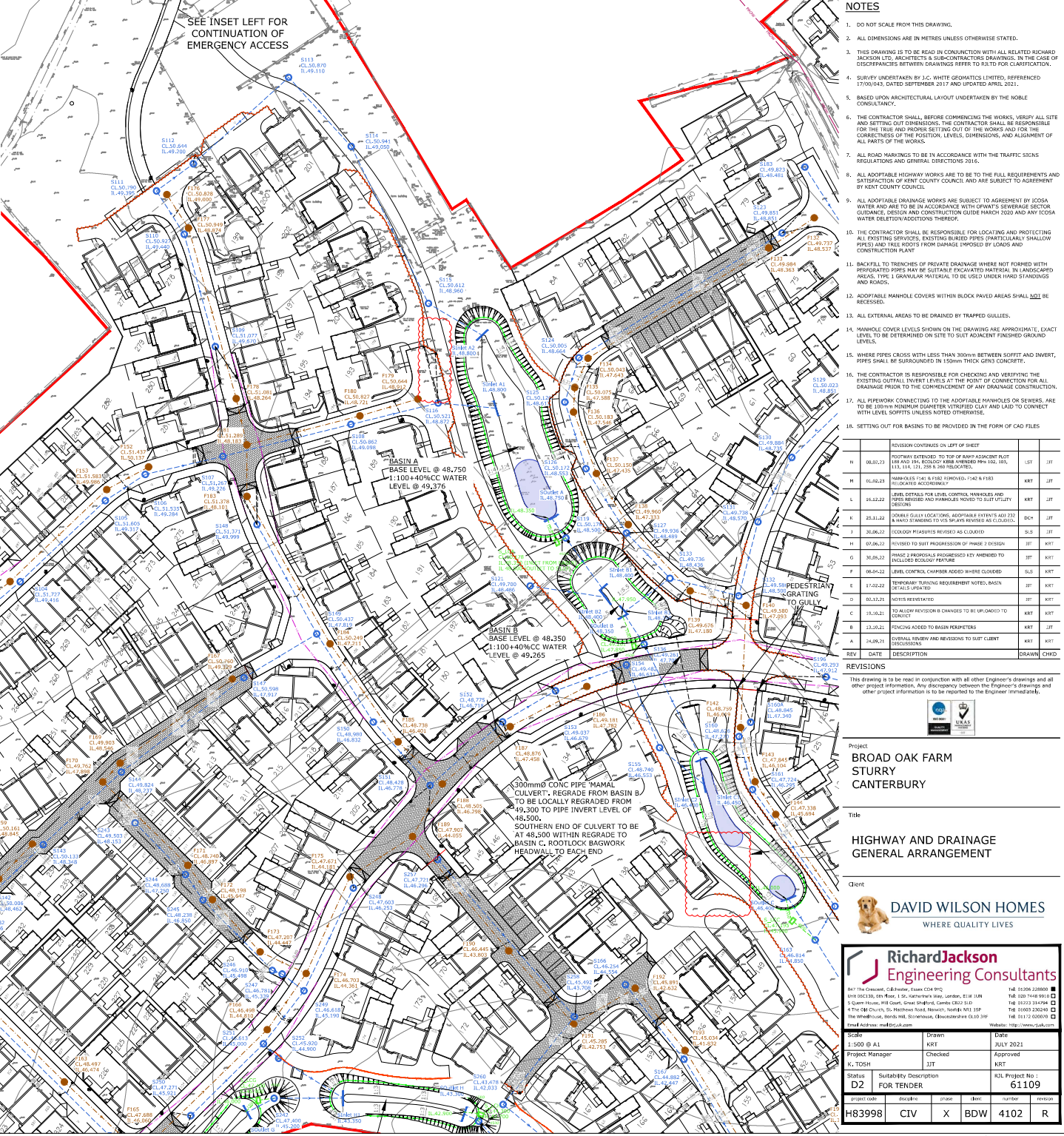


CONTRACTOR TO ALLOW FOR THE PROVISION OF A DROPPED KERB CROSSING FORMED BY VEHICLE CROSSOVER CONSTRUCTION WITH TACTILE PAVING AT THE GROSS OF THE EMERGENCY ACCESS, DETAILS TO BE CONFIRMED FOLLOWING RECEIPT OF UPDATED SURVEY

KEY

- F14 CL.46.109 TL.44.200: ADAPTABLE FOUL WATER MANHOLE WITH REFERENCE NUMBER, COVER LEVEL AND INVERT LEVEL
- S22 CL.46.100 TL.44.733: ADAPTABLE SURFACE WATER MANHOLE WITH REFERENCE NUMBER, COVER LEVEL AND INVERT LEVEL
- FOUL WATER DRAIN/SEWER
- SURFACE WATER DRAIN/SEWER
- ADAPTABLE SURFACE WATER MANHOLE WITH FLOW CONTROL
- PROPRIETARY PVC SURFACE WATER HEADWALL (E.G. ALUTION WITH INVERT FLOW CONTROL SYSTEM)
- PROPRIETARY VEGETATED SURFACE WATER HEADWALL (E.G. ROOTLOCK) TO SUIT PROPOSED SLOPES OF SURFACE WATER BASIN
- ROAD GULLY (EVENING PIPEWORK) - AS STANDARD
- DENOTES ROAD GULLY WITH ADD WILDFIRE KERB LOCATED CENTRALLY BEHIND
- DENOTES ROAD GULLY - GULLY POT OFFSET 50mm FROM KERBLINE
- DISTRIBUTOR UNIT SEL ENVIRONMENTAL P0005101 (GROUND PIPEWORK)
- ACD SMALL INLET (OR SIMILAR APPROVED)
- ADAPTABLE STREET LIGHTING IN ACCORDANCE WITH IEC DETAILS AND CALCULATIONS
- FENCING TO PERIMETER OF BASINS (REFER TO LANDSCAPING DRAWINGS FOR DETAILS)
- DENOTES 2.4m x 25m VISIBILITY SPAY
- DENOTES LEVEL CONTROL CHAMBER FOR SURFACE WATER BASINS. REFER TO DRG. H8390-COVERS FOR DETAILS. UPSTREAM MANHOLE WITHIN BASINS TO BE PROVIDED BY BROWNE'S AS PART OF BASIN PLANTING WORKS
- DENOTES EXTENT OF DROPPED KERBING WITH OFFSET GULLY POTS TO REDUCE MITIGATION
- DENOTES EXTENT OF INTERMITTENT FLUSHED DROPPED KERBING FOR ECOLOGY MITIGATION
- DENOTES EXTENT OF FLUSH KERBING TO TOP OF RAISED TABLE FOR ECOLOGY MITIGATION
- DENOTES PUBLIC RIGHT OF WAY DEMARCATED CB73

#	REV	DATE	DESCRIPTION	BY	CHKD
1	10.07.23		CHAMBER & 5M FORWARD AND GULLY RELOCATED WHERE CLOUDED.	SLS	JTF
2	05.07.23		NEW MANHOLE SLOAN ADDED TO ROAD L1	SLS	JTF
3	15.03.23		REG. OFFSET GULLY, CHANGED TO REG. ONLY WITH WILDFIRE KERB WHERE CLOUDED	SBW	JTF
REV	DATE	DESCRIPTION	BY	CHKD	



SEE INSET LEFT FOR CONTINUATION OF EMERGENCY ACCESS

NOTES

- DO NOT SCALE FROM THIS DRAWING.
- ALL DIMENSIONS ARE IN METRES UNLESS OTHERWISE STATED.
- THIS DRAWING IS TO BE READ IN CONJUNCTION WITH ALL RELATED RICHARD JACKSON LTD ARCHITECTS & SUB-CONTRACTORS DRAWINGS. IN THE CASE OF DISCREPANCIES BETWEEN DRAWINGS REFER TO R/J FOR CLARIFICATION.
- SURVEY UNDERTAKEN BY J.C. WHITE GEOMATICS LIMITED, REFERENCED 17700/043, DATED SEPTEMBER 2017 AND UPDATED APRIL 2021.
- BASED UPON ARCHITECTURAL LAYOUT UNDERTAKEN BY THE NOBLE CONSULTANCY.
- THE CONTRACTOR SHALL, BEFORE COMMENCING THE WORKS, VERIFY ALL SITE AND SETTING OUT DIMENSIONS. THE CONTRACTOR SHALL BE RESPONSIBLE FOR THE TRUE AND PROPER & SUB-CORRECT DRAWINGS. IN THE CASE OF DISCREPANCIES BETWEEN DRAWINGS REFER TO R/J FOR CLARIFICATION.
- ALL ROAD MARKINGS TO BE IN ACCORDANCE WITH THE TRAFFIC SIGNS REGULATIONS AND GENERAL DIRECTIONS 2016.
- ALL ADAPTABLE HIGHWAY WORKS ARE TO BE TO THE FULL REGULATIONS AND SATISFACTION OF KENT COUNTY COUNCIL AND ARE SUBJECT TO AGREEMENT BY NEXT COUNTY COUNCIL.
- ALL ADAPTABLE DRAINAGE WORKS ARE SUBJECT TO AGREEMENT BY ICOSA WATER AND ARE TO BE IN ACCORDANCE WITH OFWATS SEWERAGE SECTOR GUIDANCE, DESIGN AND CONSTRUCTION GUIDE MARCH 2020 AND ANY ICOSA WATER DEVIATION/ADDITIONS THEREOF.
- THE CONTRACTOR SHALL BE RESPONSIBLE FOR LOCATING AND PROTECTING ALL EXISTING SERVICES, EXISTING BURIED PIPES (PARTICULARLY SHALLOW PIPES) AND TELL POTS FROM DAMAGE IMPOSED BY CONES AND CONSTRUCTION PLANT
- BACKFILL TO TRENCHES OF PRIVATE DRAINAGE WHERE NOT FURNISHED WITH PERFORATED PIPES MAY BE SUFFICIENT PROTECTIVE MATERIAL IN LANDSCAPED AREAS. TYPE 1 GRANULAR MATERIAL TO BE USED UNDER HARD STANDINGS AND PAVES.
- ADAPTABLE MANHOLE COVERS WITHIN BLOCK PAVED AREAS SHALL NOT BE RECEIVED.
- ALL EXTERNAL AREAS TO BE DRAINED BY TRAPPED GULLIES.
- MANHOLE COVER LEVELS SHOWN ON THE DRAWING ARE APPROXIMATE. EXACT LEVEL TO BE DETERMINED ON SITE TO SUIT ADJACENT FINISHED GRAOUND LEVELS.
- WHERE PIPES CROSS WITH LESS THAN 300mm BETWEEN FINISH AND INVERT, PIPES SHALL BE SURROUNDED IN 150mm THICK GRS3 CONCRETE.
- THE CONTRACTOR IS RESPONSIBLE FOR CHECKING AND VERIFYING THE EXISTING OUTFALL INVERT LEVELS AT THE POINT OF CONNECTION FOR ALL DRAINAGE FROM THE TO THE COMMENCEMENT OF ANY DRAINAGE CONSTRUCTION.
- ALL PIPEWORK CONNECTING TO THE ADAPTABLE MANHOLES OR SENSORS, ARE TO BE 100mm MINIMUM DIAMETER VITRIFIED CLAY AND LAID TO CONNECT WITH LEVEL SLOTTES UNLESS NOTED OTHERWISE.

18. SETTING OUT FOR BASINS TO BE PROVIDED IN THE FORM OF CAD FILES

REV	DATE	DESCRIPTION	BY	CHKD
H	08.03.23	FOOTWAY EXTENDED TO TOP OF RAMP ADJACENT PLOT 188 AND 194. ECOLOGY AREA AMENDED FROM 100.00, 103.115, 114.121, 238.186, 365.000 TO 100.000	SLS	JTF
H	03.02.23	MANHOLES F14 & F15 SITUATED 114.0 & F165	KRT	JTF
L	16.12.22	LEVEL DETAILS FOR LEVEL CONTROL MANHOLES AND SENSORS REVISSED AND MANHOLES MOVED TO SUIT UTILITY AREAS	KRT	JTF
T	23.12.22	DOUBLE GULLY LOCATIONS, ADAPTABLE SENSORS ADD 232 & HAND CHANGING TO VIS SPAYS REVISSED AS CLOUDED.	DCW	JTF
T	30.06.22	ECOLOGY MEASURES REVISSED AS CLOUDED.	SLS	JTF
H	07.06.22	REVISSED TO SUIT PROGRESSION OF PHASE 2 DESIGN	JTF	KRT
G	30.05.22	PLANTING PROVISION RECOMMENDED KEY AMENDED TO INCLUDE ECOLOGY FEATURE	JTF	KRT
F	08.04.22	LEVEL CONTROL CHAMBER ADDED WHERE CLOUDED	SLS	JTF
F	17.02.22	TEMPORARY TRAFFIC REQUIREMENT NOTED, BASIN JTF	KRT	JTF
D	03.12.21	NOTES REVISSED	JTF	KRT
C	19.10.21	TO ALLOW REVISIONS CHANGES TO BE IMPLEMENTED TO CONTACT	KRT	JTF
E	13.01.21	FENCING ADDED TO BASIN PERIMETERS	KRT	JTF
A	14.08.21	EXTERNAL REVISION AND REVISIONS TO SUIT CLIENT	KRT	JTF

REVISIONS

REV	DATE	DESCRIPTION	BY	CHKD
H	08.03.23	FOOTWAY EXTENDED TO TOP OF RAMP ADJACENT PLOT 188 AND 194. ECOLOGY AREA AMENDED FROM 100.00, 103.115, 114.121, 238.186, 365.000 TO 100.000	SLS	JTF
H	03.02.23	MANHOLES F14 & F15 SITUATED 114.0 & F165	KRT	JTF
L	16.12.22	LEVEL DETAILS FOR LEVEL CONTROL MANHOLES AND SENSORS REVISSED AND MANHOLES MOVED TO SUIT UTILITY AREAS	KRT	JTF
T	23.12.22	DOUBLE GULLY LOCATIONS, ADAPTABLE SENSORS ADD 232 & HAND CHANGING TO VIS SPAYS REVISSED AS CLOUDED.	DCW	JTF
T	30.06.22	ECOLOGY MEASURES REVISSED AS CLOUDED.	SLS	JTF
H	07.06.22	REVISSED TO SUIT PROGRESSION OF PHASE 2 DESIGN	JTF	KRT
G	30.05.22	PLANTING PROVISION RECOMMENDED KEY AMENDED TO INCLUDE ECOLOGY FEATURE	JTF	KRT
F	08.04.22	LEVEL CONTROL CHAMBER ADDED WHERE CLOUDED	SLS	JTF
F	17.02.22	TEMPORARY TRAFFIC REQUIREMENT NOTED, BASIN JTF	KRT	JTF
D	03.12.21	NOTES REVISSED	JTF	KRT
C	19.10.21	TO ALLOW REVISIONS CHANGES TO BE IMPLEMENTED TO CONTACT	KRT	JTF
E	13.01.21	FENCING ADDED TO BASIN PERIMETERS	KRT	JTF
A	14.08.21	EXTERNAL REVISION AND REVISIONS TO SUIT CLIENT	KRT	JTF

This drawing is to be read in conjunction with all other Engineer's drawings and all other project information. Any discrepancy between the Engineer's drawings and other project information is to be reported to the Engineer immediately.

Project: **BROAD OAK FARM STURRY CANTERBURY**

Title: **HIGHWAY AND DRAINAGE GENERAL ARRANGEMENT**



Richard Jackson Engineering Consultants

107 The Crescent, 23 Humberstone Road, L24 0PL, Leamington Spa, CV32 3JG, Warwickshire, UK
 01923 335 400 (Mon-Fri), 116, Cranborne Way, London, E14 1UG, UK
 020 7498 9910 (UK)
 01923 334494 (USA)
 The Old Church, 20 Humberstone Road, Leamington Spa, CV32 3JG, Warwickshire, UK
 The Wheelhouse, 20 Humberstone Road, Leamington Spa, CV32 3JG, Warwickshire, UK
 Email: info@rjackson.co.uk Website: www.rjackson.co.uk

Scale	Drawn	Date
1:500 @ A1	KRT	JULY 2021
Status	Submittal Description	R/JL Project No :
D2	FOR TENDER	61109

Project No	Discipline	Phase	Item	Number	Revision
H83998	CIV	X	BDW	4102	R