

Notes:

1. This drawing to be read in conjunction with all other relevant Monson drawings and specifications, any discrepancies to be reported to Monson prior to any fabrication or work commencing on site.
2. Do not scale this drawing, use figured dimensions only.
3. All dimensions in millimetres, all levels in metres.

RISK ASSESSMENT

RESIDUAL RISKS IDENTIFIED

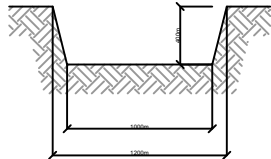
1. None identified, 22/05/18.

CONTRACTOR'S GENERAL RISK ITEMS

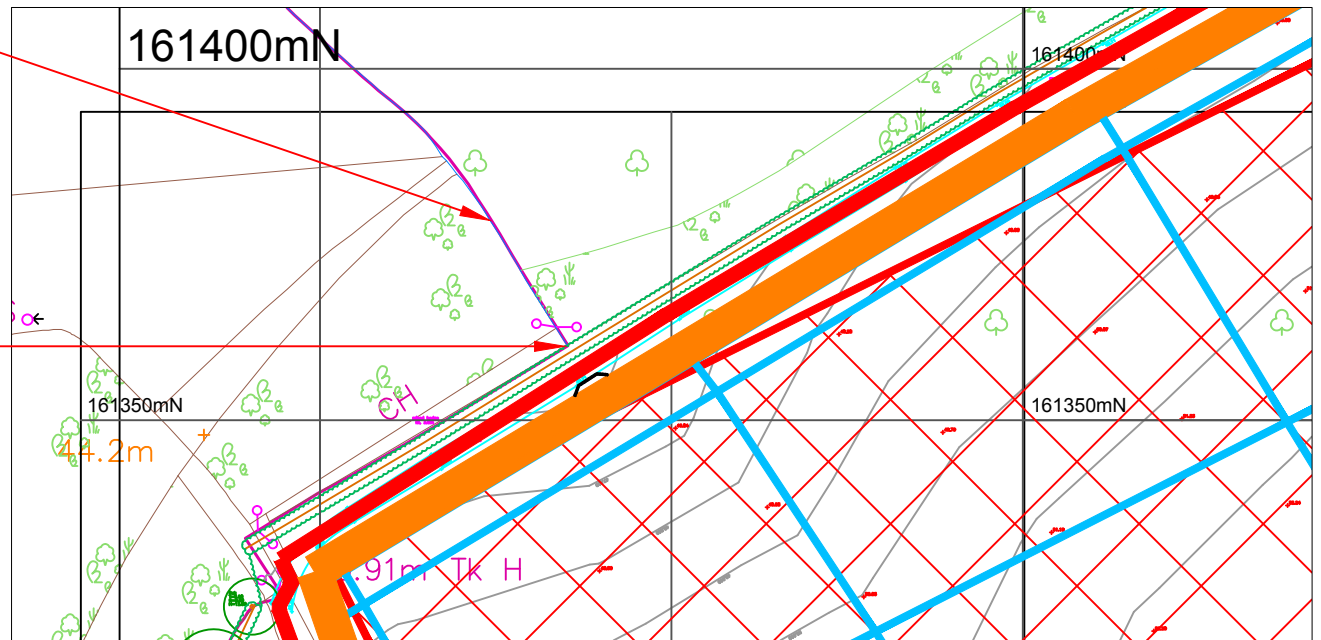
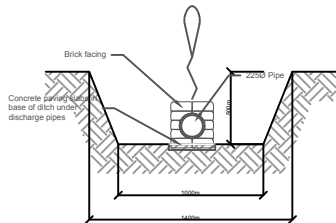
(List is not exhaustive but includes commonly raised issues)

1. Location of all buried services.
2. Existing drainage:
 - i) Gases, confined spaces, diseases.
 - ii) Maintain flow in drains during works.
3. Manual lifting of heavy objects: Manhole covers, drainage pipes, concrete rings, kerbs, etc.
4. Excavation for drainage trenches and manholes.
5. Security: Keep site secure from members of the public. Maintain public safety when accessing site

SECTION THROUGH DITCH @
DOWNSTREAM POINT



SECTION THROUGH DITCH @
DISCHARGE POINT



A	JF	22/05/18	Original issue
Issue	By	Date	Amendments

©Monson Engineering Ltd.

MONSON

Broadway Chambers, High Street, Crowborough, East Sussex TN6 1DF
Tel: (01892) 601370, Fax: (01892) 601379
E-mail: enquiries@monson.co.uk

Project:
Jocks & Morrello
Goose Farm
Broad Oak
Canterbury

Original Drawing: Prepared JF Approved LGL
Origin: Crowborough Size A4
Current Issue: Approved LGL Date 22/05/18
Drawing Status: APPROVAL

Description:
Typical Cross Sections for
Land Drainage Discharge
Consent

Scale: NTS
Dwg No: 8650/O
Issue: A