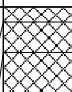



Client: VKHP-Consulting		Depth (m) 2.50	Plant used: JCB 3CX	TRIAL PIT NUMBER TP01 Sheet 1 of 1
Width (m) 0.50	Length (m) 2.50	Method of Excavation :	Shoring: NONE	
Co-ordinates E N	Ground Level (mAOD)	Mechanical Excavator	Date Started :17/01/2017	



Samples/In Situ Tests			Change of Strata		Description of Strata	Legend
Depth (m)	Type	Test/Field Records	Reduced Level (mAOD)	Depth & Thickness (m)		
				0.05	Grass over dark brown, gravelly, slightly sandy SILT. Gravel is rounded, fine to medium flint. Sand is fine to coarse. (Made Ground)	
				0.15 (0.15)		
				0.30		
					Grey, slightly gravelly, fine to coarse SAND. Gravel is angular, fine to medium sandstone. (Made Ground)	
					Dark brown, slightly sandy SILT. Sand is fine. (Made Ground)	
					CHALK recovered as cream mottled orangish brown and brown, structureless melange comprising 50% - 70% angular to sub-angular, fine to coarse GRAVEL set in a 30% - 50% silty, fine to coarse sand matrix. Low cobble content of angular chalk. Low gravel and cobble content of sub-angular and sub-rounded flint. (Seaford Chalk Formation)	
				(2.20)		
				2.50	----- End of Trial Pit at 2.50 m	
DRAFT						

General Remarks:

1. Rootlets observed to 0.30m.
2. Trial pit remained stable during excavation.
3. Once the trial pit was completed two soakage tests were carried out.
4. When filling with water for the first test, trial pit collapsed to 2.10m below ground level.
5. Trial pit remained stable during both soakage tests.

Ref:	392882	TRIAL PIT RECORD Scale 1:25 <small>Symbols and abbreviations in accordance with AGS</small>	 INFRASTRUCTURE Giving our all
Logged:	STP		
Check'd:		Baker's Lane, Chartham	FIG A1
Appr'd:			

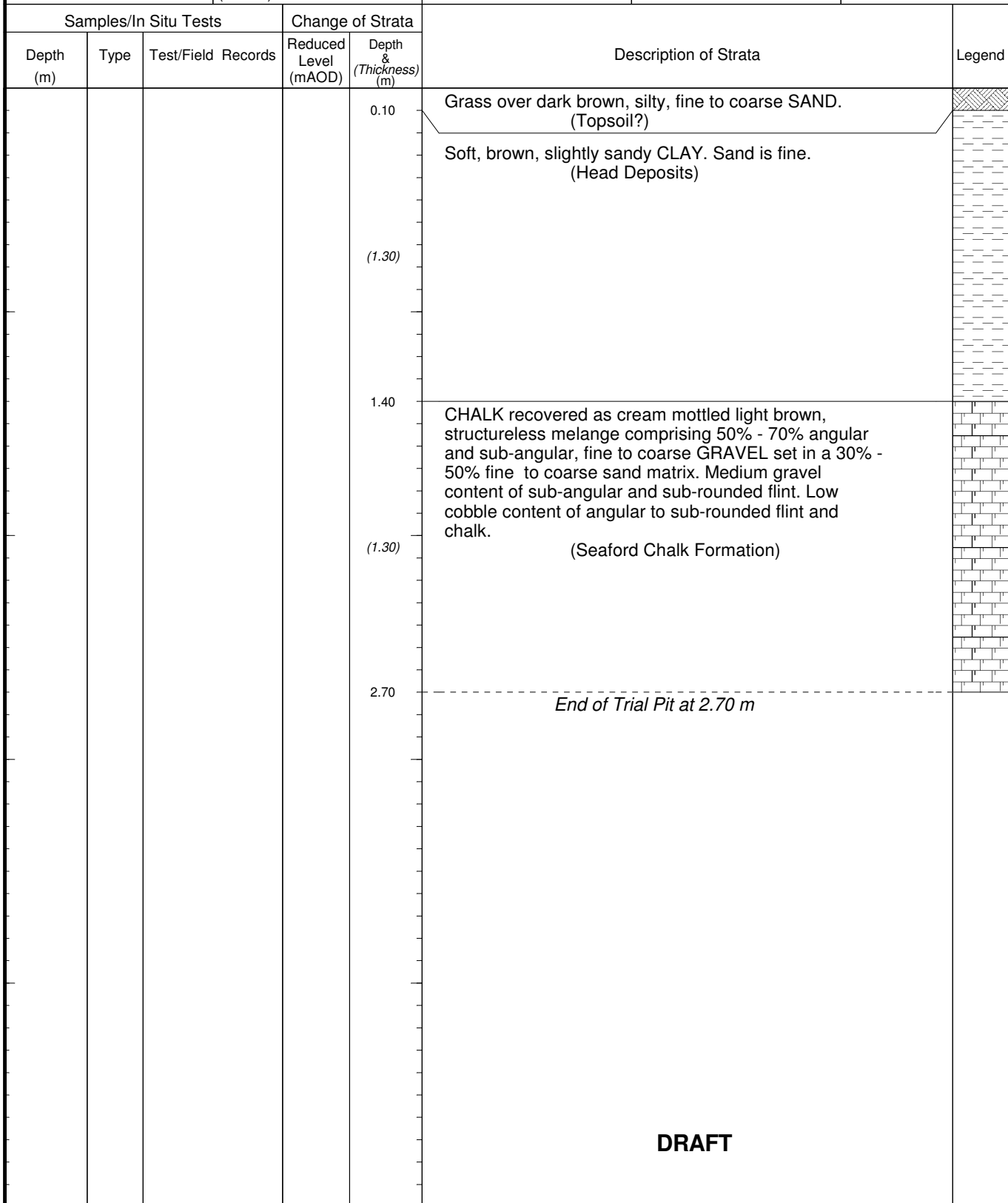
Client: VKHP-Consulting		Depth (m) 1.50	Plant used: JCB 3CX	TRIAL PIT NUMBER TP01A Sheet 1 of 1
Width (m) 0.50	Length (m) 2.50	Method of Excavation :	Shoring: NONE	
Co-ordinates E N	Ground Level (mAOD)	Mechanical Excavator	Date Started :17/01/2017	

Samples/In Situ Tests			Change of Strata		Description of Strata	Legend
Depth (m)	Type	Test/Field Records	Reduced Level (mAOD)	Depth & Thickness (m)		
				(0.30)	Grass over dark brown, slightly sandy SILT. Sand is fine to coarse. (Topsoil?)	
				0.30	CHALK recovered as cream mottled brown, structureless melange comprising 50% - 70% angular to sub-angular, fine to coarse GRAVEL set in a 30% - 50% silty, fine to coarse sand matrix. Low cobble content of angular chalk. Low gravel and cobble content of sub-angular and sub-rounded flint. (Seaford Chalk Formation)	
				(1.20)		
				1.50	----- <i>End of Trial Pit at 1.50 m</i>	
DRAFT						

General Remarks:
1. Rootlets observed to 0.30m.
2. Trail pit was unstable during excavation.
3. Trial pit was backfilled and re-located.
4. No soakage test was carried out within the trial pit.

Ref:	392882	TRIAL PIT RECORD Scale 1:25 <small>Symbols and abbreviations in accordance with AGS</small>	 INFRASTRUCTURE Giving our all
Logged:	STP		
Check'd:		Baker's Lane, Chartham	FIG A2
Appr'd:			

Client: VKHP-Consulting		Depth (m) 2.70	Plant used: JCB 3CX	TRIAL PIT NUMBER TP02 Sheet 1 of 1
Width (m) 0.50	Length (m) 2.50	Method of Excavation :	Shoring: NONE	
Co-ordinates E N	Ground Level (mAOD)	Mechanical Excavator	Date Started :01/01/2017	



General Remarks:

1. Rootlets observed to 0.40m.
2. Trial pit remained stable during excavation.
3. Once the trial pit was completed an soakage test was carried out.
4. When filling with water, trial pit collapsed to 2.40m below ground level.
5. Trial pit remained stable during soakage test.

Ref:	392882	TRIAL PIT RECORD Scale 1:25 <small>Symbols and abbreviations in accordance with AGS</small>	 CET INFRASTRUCTURE Giving our all
Logged:	STP		
Check'd:		Baker's Lane, Chartham	FIG A3
Appr'd:			