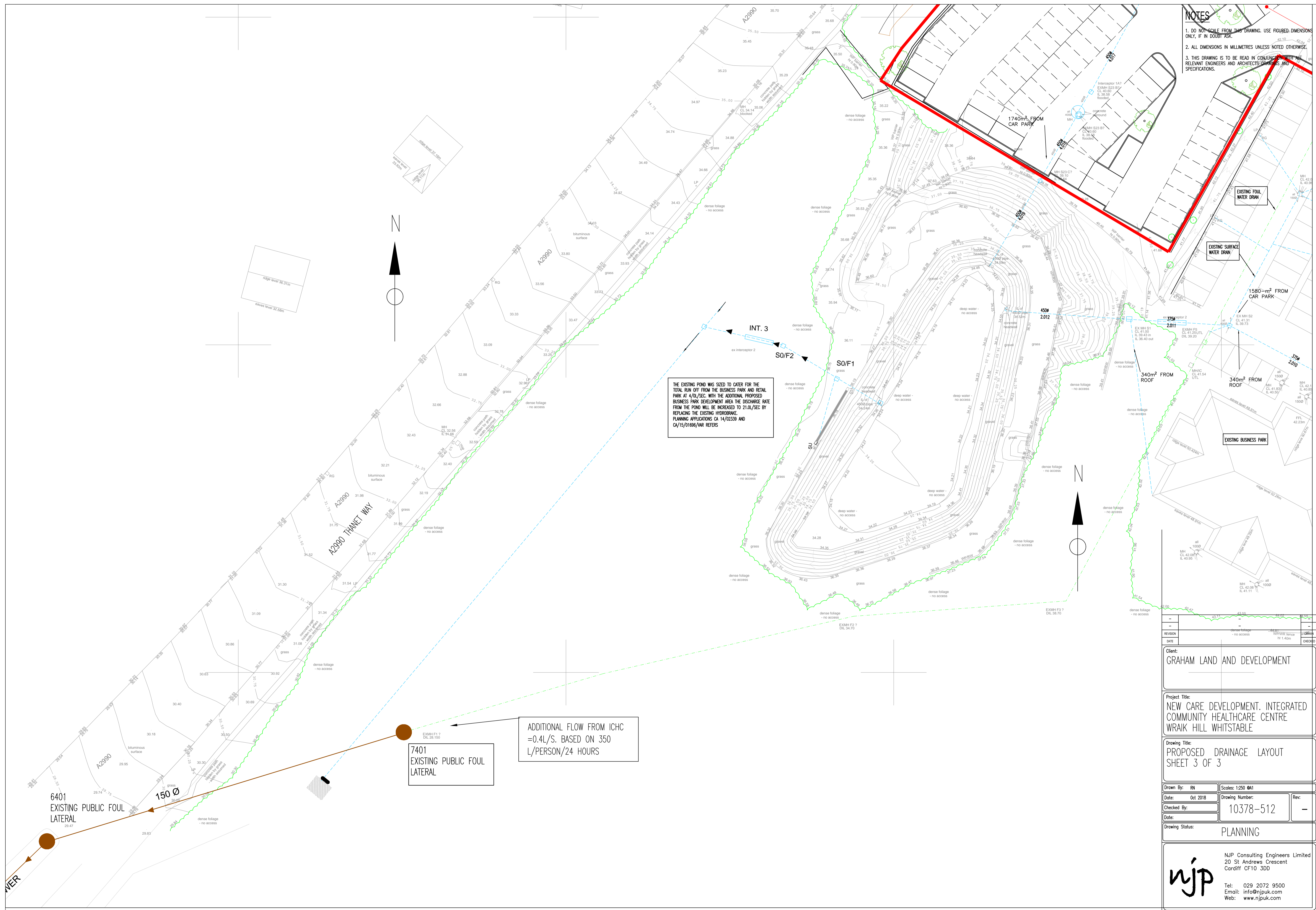


- NOTES**
1. DO NOT SCALE FROM THIS DRAWING. USE FIGURED DIMENSIONS ONLY, IF IN DOUBT ASK.
 2. ALL DIMENSIONS IN MILLIMETRES UNLESS NOTED OTHERWISE.
 3. THIS DRAWING IS TO BE READ IN CONJUNCTION WITH ALL RELEVANT ENGINEERS AND ARCHITECTS DRAWINGS AND SPECIFICATIONS.



THE EXISTING POND WAS SIZED TO CATER FOR THE TOTAL RUN OFF FROM THE BUSINESS PARK AND RETAIL PARK AT 4L/SEC. WITH THE ADDITIONAL PROPOSED BUSINESS PARK DEVELOPMENT AREA THE DISCHARGE RATE FROM THE POND WILL BE INCREASED TO 21L/SEC BY REPLACING THE EXISTING HYDROGRAPH. PLANNING APPLICATIONS CA 14/02339 AND CA/15/01696/AVR REFERS

ADDITIONAL FLOW FROM ICHC = 0.4L/S. BASED ON 350 L/PERSON/24 HOURS

7401 EXISTING PUBLIC FOUL LATERAL

6401 EXISTING PUBLIC FOUL LATERAL

150 Ø

Client: GRAHAM LAND AND DEVELOPMENT

Project Title: NEW CARE DEVELOPMENT, INTEGRATED COMMUNITY HEALTHCARE CENTRE WRAIK HILL WHITSTABLE

Drawing Title: PROPOSED DRAINAGE LAYOUT SHEET 3 OF 3

Drawn By: RN	Scales: 1:250 @M	Rev:
Date: Oct 2018	Drawing Number: 10378-512	
Checked By:		
Date:		

Drawing Status: PLANNING

njp
 NJP Consulting Engineers Limited
 20 St Andrews Crescent
 Cardiff CF10 3DD
 Tel: 029 2072 9500
 Email: info@njpk.com
 Web: www.njpk.com