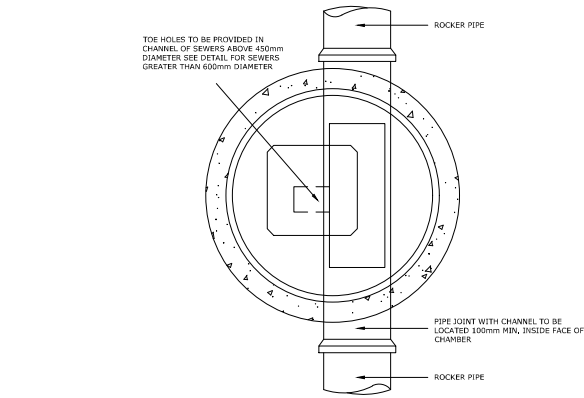
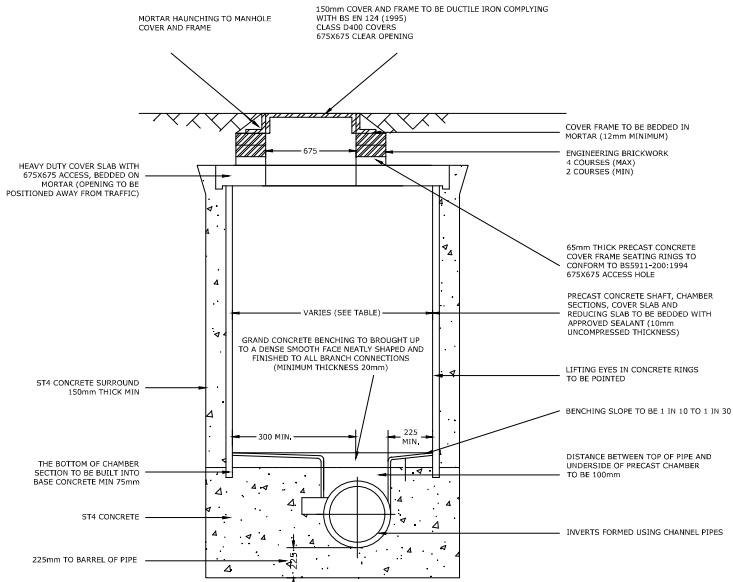


MANHOLE ACCESS TO COMPLY WITH BS EN 752-3 NATIONAL ANNEX NB



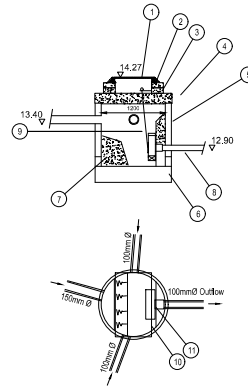
ADOPTED MANHOLE AFW (SCALE 1:20)

NOMINAL DIAMETER OF LARGEST PIPE IN MH (mm)	MINIMUM NOMINAL INTERNAL DIMENSION OF MANHOLE (mm)
LESS THAN 375mm	1200
375-450	1350
500 - 700	1500
750 - 900	1800
> 900	PIPE DIAMETER + 900

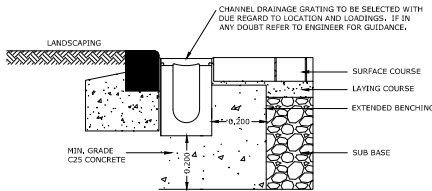
ALL PIPES ENTERING OR LEAVING MANHOLES SHALL HAVE A FLEXIBLE JOINT WITHIN 600mm OF THE INSIDE FACE OF THE MANHOLE. THE NEXT PIPE SHOULD BE A SHORT 'ROCKER PIPE' WITH LENGTH AS TABLE BELOW.

SEWER DIAMETER (mm)	EFFECTIVE LENGTH (mm)
150 TO 600	600
675 TO 750	1000
825 AND OVER	1250

HYDRO TO ADVISE ON MANHOLE BASE INVERT

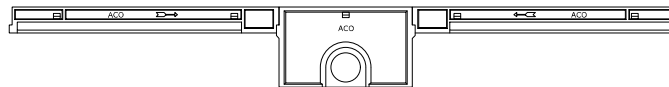


TYPICAL HYDROBRAKE DETAIL. REFER TO DRAINAGE DRAWING FOR HYDROBRAKE FLOW PARAMETERS AND HYDRO INTERNATIONAL DETAILS FOR INSTALLATION



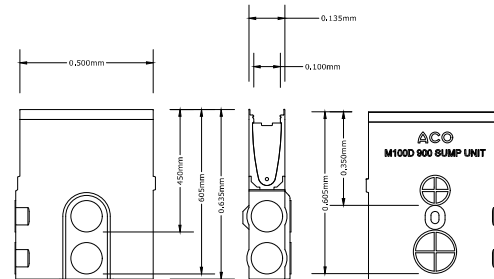
FOR ALTERNATIVE PAVEMENT SITUATIONS REFER TO ENGINEER FOR FURTHER ADVICE.
BED & HAUNCH DIMENSIONS:
LOAD CLASS A B C D/E/F
DIM x (mm) 100 125 150 200

ACO M100D DRAIN INSTALLATION DETAIL SCALE 1:10



SUMP TO BE USED AT EACH ACO CONNECTION POINT. ADVICE AND DESIGN TO BE SOUGHT FROM ACO ON USE OF SUITABLE CHANNEL SECTION AND PRODUCT IN EACH CASE.

ACO DRAIN M100D SCALE 1:10



SUMP

ACO DRAIN M100D SCALE 1:10

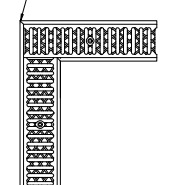
- Cover and frame shall be Stanton Plc "Brior" Type H2DN or equivalent. Frame shall have a minimum clear opening of 1200 x 675mm, bedded on a minimum of 12mm of mortar Designation (i) to Clause 2404 of the Specification.
- Class M1 mortar haunch.
- Precast concrete cover frame seating rings (min 1, max 3) 1200 x 675mm clear opening.
- Precast concrete heavy duty cover slab with 1220 x 675mm access, as manufactured by ARC pipes, or equivalent approved.
- Precast concrete chamber sections to comply with BS 5911:PI200:1989. All units shall be bedded on Mortar Designation (i) to Clause 2404 of the Specification, alternatively a proprietary bitumen or resin mastic sealant may be used.
- 300mm thick Mix ST4 concrete foundation and benching to Clause 2602 of the Specification.
- Benching to suit intake pipes.
- Pipes built into chamber walls and rocker pipes to Clause 507.15 of the Specification.
- Pivoting by-pass door operated by steel rope. Eye bracket for operating rope is attached to concrete seating rings by approved fixings.
- Approximate position of cover slab opening (central to cover slab).
- Type 5mh Hydrobrake as supplied by Hydro International

NOTE Items 9 and 11 are to be provided by Hydro International (Tel 01275 878371). Contractor is to allow in his rates for the purchase, delivery, and full installation to manufacturers instructions.

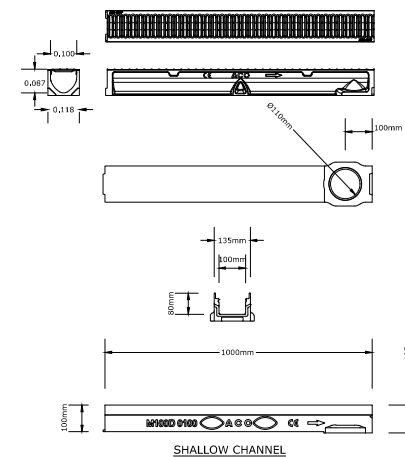
General Notes.

- Manholes to be constructed generally in accordance with standard details except where indicated. Bespoke Hydrobrake chambers can be used with the advance agreement of the Engineer.
- Hydrobrakes to be installed before any significant live development flows.
- Due regard and reference to be made to Hydro Internationals installation details. If in doubt ask the Engineer for guidance prior to work taking place.
- This drawing is to be read in conjunction with all relevant Engineers details and drawings and the Hydro International quotations / requirements supplied for this development.

CHANNEL SIDE WALLS CUT AWAY WITH DISC CUTTER AND CHANNELS MITRED 45° AT JUNCTION.



EXAMPLE OF PRINCIPLES TO BE FOLLOWED FOR A 90° METRE CUT CHANNEL WITH BUTTED GRATING (LOAD CLASS A TO C)



NOTES

- THIS DRAWING IS TO BE READ IN CONJUNCTION WITH ALL RELEVANT ENGINEERS, ARCHITECTS AND SPECIALISTS DRAWINGS AND THE SPECIFICATION.
- ALL WORK IS TO BE CARRIED OUT IN ACCORDANCE WITH THE RELEVANT BRITISH STANDARDS, EUROPEAN NORMS, CODES OF PRACTICE AND BUILDING PRACTICE.
- ALL DIMENSIONS ARE TO BE CHECKED BY THE CONTRACTOR PRIOR TO STARTING THE WORKS ON SITE. ANY DISCREPANCIES ARE TO BE REPORTED TO THE ENGINEER IMMEDIATELY.
- FOR CIVIL & STRUCTURAL HEALTH & SAFETY HAZARDS PLEASE REFER TO DESIGNERS RISK ASSESSMENTS.
- IF YOU DO NOT UNDERSTAND FULLY ANY OF THE DETAILS SHOWN ON THIS DRAWING CONTACT THE ENGINEER FOR CLARIFICATION.
- BURIED CONCRETE SULPHATE CLASS AS PER SITE INVESTIGATION REPORT.

Rev	Date	Amendment Details	Drn	Chk	App
P02	02.08.2022	Hydrobrake detail added	TC	TC	TC
P01	06.07.2022	FIRST ISSUE	TC	TC	TC

This drawing should not be relied on or used in circumstances other than those for which it was originally prepared and for which Sweco UK Limited was commissioned. Sweco UK Limited accepts no responsibility for this drawing to any party other than the person to whom it was commissioned. Any party which breaches the provisions of this disclaimer shall indemnify Sweco UK Limited for all loss or damage arising therefrom. COPYRIGHT © Sweco 2021

Sweco
Connect 38
1 Dover Place
Ashford, Kent
TN23 1FB
Tel: +44 (0)1233 610 530
Web: www.sweco.co.uk



Client

Aspire Designer Homes

Project Title

Vulcan Close

Drawing Title

Construction Details
Sheet 2

Purpose Of Issue				
PRELIMINARY				
Status	SO	Status Description	INITIAL STATUS OR WIP	
Drawings	TC	Drawn	TC	Checked - Approved -
Sheet Size	A1	Scale	N/A	SWECO Ref - Revision
Drawing Number	65203468-SWE-ZZ-00-DR-C-0006			