

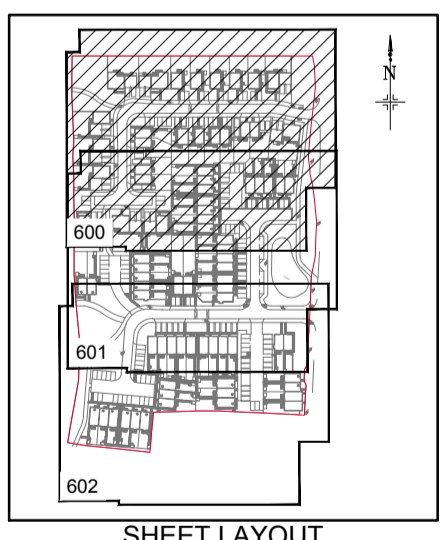
- CONTRACTORS MUST CHECK ALL DIMENSIONS ON SITE. ONLY FIGURED DIMENSIONS ARE TO BE WORKED FROM. DISCREPANCIES MUST BE REPORTED TO THE ARCHITECT OR ENGINEER BEFORE PROCEEDING. © THIS DRAWING IS COPYRIGHT.
- REPRODUCED FROM OS SITEMAP © BY PERMISSION OF THE CONTROLLER OF HER MAJESTY'S STATIONERY OFFICE. © CROWN COPYRIGHT 2008. ALL RIGHTS RESERVED. LICENCE NUMBER 100007126.
- UNTIL TECHNICAL APPROVAL HAS BEEN OBTAINED FROM THE RELEVANT AUTHORITIES, ALL DRAWINGS ARE ISSUED AS PRELIMINARY AND NOT FOR CONSTRUCTION. SHOULD THE CONTRACTOR COMMENCE SITE WORK PRIOR TO APPROVAL BEING GIVEN IT IS ENTIRELY AT THEIR OWN RISK.
- WOODS HARDWICK CANNOT ACCEPT LIABILITY FOR ANY DISCREPANCIES IN TERMS OF COORDINATES OR ANY OTHER INFORMATION DECIPHERED FROM DWGS.
- THE EXACT LOCATION AND LEVEL OF ALL EXISTING SEWERS, DRAINS AND SERVICES TO BE CONFIRMED ON SITE PRIOR TO THE COMMENCEMENT OF ANY WORKS.
- ALL ADOPTABLE SEWERS AND MANHOLES ARE TO BE CONSTRUCTED IN COMPLIANCE WITH 'SEWERS FOR ADOPTION 6TH EDITION'.
- ALL PRIVATE DRAINAGE TO COMPLY WITH SECTION H OF THE BUILDING REGULATIONS 2000 (2002 EDITION) AND BS 8301:1985.

SAFETY HEALTH AND ENVIRONMENTAL

THERE ARE NO EXCEPTIONAL RISKS ASSOCIATED WITH THESE WORKS. REFER TO THE DESIGNERS RISK ASSESSMENT FOR THE FULL ASSESSMENT OF RISKS.

KEY

- EXISTING COMBINED SEWER
- EXISTING STORM SEWER
- PROPOSED ADOPTABLE SOUTHERN WATER SURFACE WATER SEWER
- PROPOSED ADOPTABLE SOUTHERN WATER FOUL WATER SEWER
- PROPOSED ADOPTABLE HIGHWAY AUTHORITY ROAD GULLY
- PROPOSED PRIVATE SURFACE WATER MANHOLE (>3 CONNECTIONS)
- PROPOSED PRIVATE SURFACE WATER INSPECTION CHAMBER (MAX 3 CONNECTIONS)
- PROPOSED PRIVATE RODDING EYE
- PROPOSED PRIVATE METAL YARD GULLY
- PROPOSED PRIVATE METAL DRAINAGE CHANNEL
- PROPOSED PRIVATE LAND DRAIN
- PROPOSED PRIVATE PERMEABLE PAVING
- PROPOSED PRIVATE CELLULAR STORAGE
- PROPOSED PRIVATE CELLULAR STORAGE UNDERNEATH PERMEABLE PAVING
- PROPOSED PRIVATE FOUL WATER INSPECTION CHAMBER (>3 CONNECTIONS)
- PROPOSED PRIVATE FOUL WATER ACCESS CHAMBER
- FFL XX.XXX FINISHED FLOOR LEVEL
- HOUSING ASSOCIATION
- FINISHED EXTERNAL LEVEL
- EXTRA FACING BRICKWORK
- STEPPED DPC TO ARCHITECTS DETAILS
- TANKING TO ARCHITECTS DETAILS
- STEP (280mm MIN. GOING 150mm MAX. RISER)
- GRAVEL BOARD (MAX. RETAINING AS ANNOTATED)
- RETAINING FEATURE (MAX. RETAINING AS ANNOTATED)
- UNILOG RETAINING FEATURE (MAX. RETAINING AS ANNOTATED)
- EMBANKMENT



REVISION	DESCRIPTION	DRAWN	CHECKED	DATE
G	CONTROL CHAMBER DISCHARGE RATE REDUCED. CELLULAR STORAGE INCREASED.	CG	PK	12.01.2018
F	HIGHWAY UPDATED TO SUIT KCC'S S278/38 COMMENTS	CG	PK	08.01.2018
E	DRAINAGE UPDATED TO SUIT SOUTHERN WATER'S S104 COMMENTS	JL	PK	20.12.2017
D	DRAINAGE UPDATED TO SUIT SOUTHERN WATER'S S104 COMMENTS	JL	PK	13.11.2017
C	REVISED TO SUIT AMENDED BASE	JL	MDF	25/10/2017
B	LEVELS ADDED TO THE STORAGE TANKS	JL	MDF	05/10/2017
A	RENUMBERING OF PLOTS	BS	MDF	03/10/2017

PRELIMINARY  INFORMATION  TENDER  CONSTRUCTION  AS BUILT

**WOODS HARDWICK**  
ARCHITECTS, ENGINEERS AND DEVELOPMENT CONSULTANTS

TITLE: BREDLANDS LANE WESTBERE  
DETAILS: ENGINEERING LAYOUTS SHEET 1 OF 3

SCALE: 1:200 @ A1 DATE: AUGUST 2017 DRAWN: JL CHK: MDF

Please consider the environment before printing this drawing  
Filepath: F:\Engineer

15-17 GOLDINGTON ROAD BEDFORD, MK40 3NH T +44 (0)1234 208862  
FORD DUNLOP, FORT PARKWAY BRIMINGHAM, B24 9FE UNITED KINGDOM T +44 (0)121 6297784 M MAIL@WOODSHARDWICK.COM WWW.WOODSHARDWICK.COM