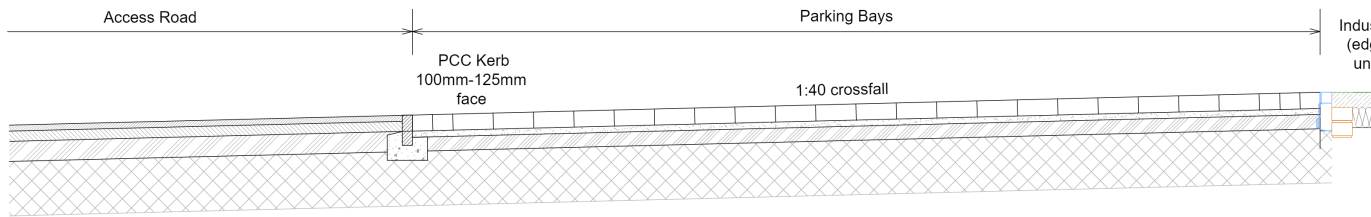


Access Road / Parking Areas

scale 1:25



Access Road Construction Specification - Macadam

- 30mm Stone Mastic Asphalt Surface Course to BS EN 13108-5 and Clause 937 of the Specification for Highway Works.
- 60mm Dense Bitumen AC20 Binder Course to BS EN 13108-1 and Clause 906 of the Specification for Highway Works.
- 90mm Dense Bitumen AC32 Roadbase Course to BS EN 13108-1 Part 1 and Clause 903 of the Specification for Highway Works.
- 300mm Type 1 Granular Sub-base to Clause 803 of the Specification for Highway Works.

450mm total formation depth.

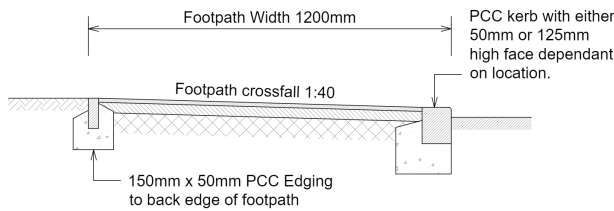
Parking Bays Construction Specification - Block Paved

- 80mm Concrete Block Pavers 200mm x 100mm to BS6677 and Clause 1107 of the Specification for Highway Works. 2 Courses of stretcher bond to be laid adjacent to kerbs and around ironwork in highway.
- 30mm Compacted Layer Sharp Sand.
- 70mm Dense Bitumen Roadbase course to BS4987 Part 1 and Clause 903 of the Specification for Highway Works.
- 300mm Type 1 granular subbase to Clause 803 of the Specification for Highway Works.

480mm Total formation depth.

Macadam Footway Construction

scale 1:25



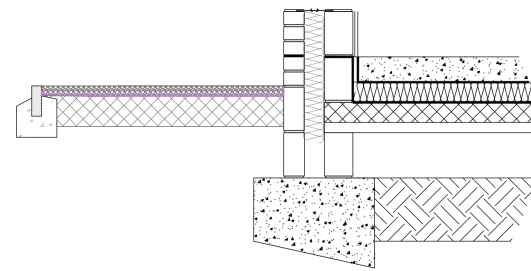
Footpath Construction Specification - Macadam

- 20mm Dense Asphalt AC6 Surface Course to BS EN 13108-1 and Clause 1105 of the Specification for Highway Works.
- 50mm Dense Asphalt AC20 Binder Course to BS EN 13108-1 and Clause 1105 of the Specification for Highway Works.
- 150mm Type 1 Granular Sub-base to Clause 803 of the Specification for Highway Works.

220mm Total formation depth.

Shingle Perimeter Paths

scale 1:25



Shingle Footpath Construction Specification

- 50mm of 20mm single sized shingle over a geotextile membrane
- 150mm Type 1 Granular Sub-base to Clause 803 of the Specification for Highway Works.

200mm Total formation depth.

