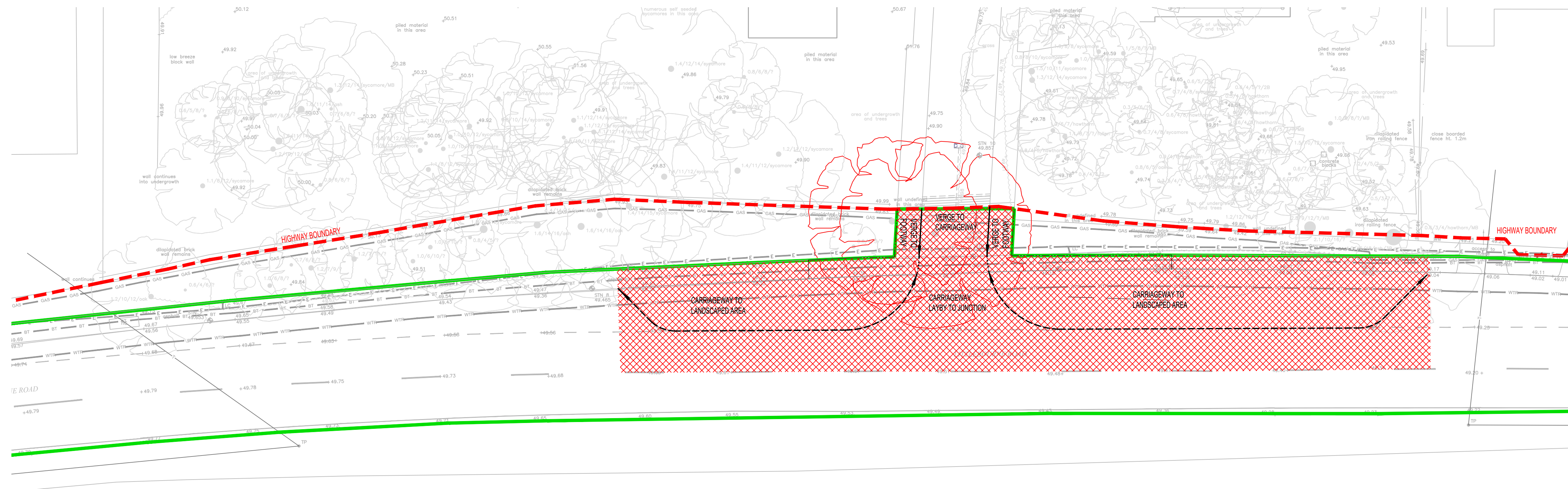
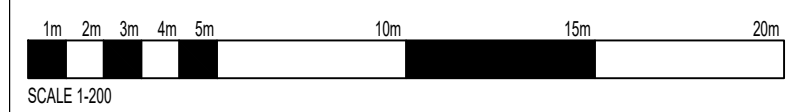


SURFACING LAYOUT
Scale 1:200



SECTION 278 AGREEMENT PLAN
Scale 1:200



- Notes:
- DO NOT SCALE FROM THIS DRAWING.
 - THIS DRAWING IS TO BE READ IN CONJUNCTION WITH ALL OTHER DRAWINGS AND SPECIFICATIONS ASSOCIATED WITH THIS PROJECT.
 - THE DEVELOPMENT LAYOUT HAS BEEN TAKEN FROM DRG. 14037_M-SBP_POLO_EW PROVIDED BY MILLWOOD HOMES DATED MARCH 2015 & THE SURVEY FROM J.C WHITE GEOMATICS LTD'S TOPOGRAPHICAL LAND SURVEY DRG. NO. 1 DATED JANUARY 2015
 - CONTRACTOR TO LOCATE UTILITIES ON SITE

- CDM REGULATIONS 2015 - RESIDUAL RISKS -**
- EXISTING UTILITY MAINS & SERVICES ARE PRESENT AND HAVE BEEN TAKEN FROM RECORDS OBTAINED FROM THE UTILITY COMPANIES. THERE IS A RISK OF UNCHARTED SERVICES BEING PRESENT.
 - THE CONTRACTOR MUST TAKE ADEQUATE PRECAUTIONS FROM THE POSSIBLE PRESENCE AND CONTAMINATION FROM LEPTOSPIROSIS (WELLS DISEASE)
 - THE WORKS WILL INVOLVE THE MOVEMENT OF PLANT AND MACHINERY IN AND AROUND A LIVE CARRIAGEWAY, A RESIDENTIAL AREA AND A SCHOOL. THERE IS A RISK OF POTENTIAL CONFLICT BETWEEN PLANT AND ROAD/PEDESTRIAN USERS.

GENERAL KEY

- HIGHWAY BOUNDARY

SURFACING LAYOUT KEY

- LANE WIDE RESURFACING - SEE DETAIL C2 ON DRAWING C1010
- 300mm TOPSOIL
- F1 - FLEXIBLE FOOTWAY
- C1 - FLEXIBLE CARRIAGEWAY

S278 AGREEMENT KEY

- S278 EXTENT OF WORKS
- EXISTING HIGHWAY LAND
- TACTILE PAVING

SEE DRAWING C1010 FOR CONSTRUCTION MAKEUP

FOR APPROVAL

P2	INCORPORATED KCC COMMENTS	DNT	DdeM	29/09/17
P1	S278 SUBMISSION	DNT	DdeM	24/07/15
Rev	Description	Dm	Chk	Date

BdR

Incorporating:
K L Harrison & Associates Ltd
Civil & Structural Engineering Consultants

The Old Engine House
Gobolds Farm Business Park
Court Lane, Hadlow
Kent
TN11 0DP
Tel 01732 851415
Fax 01732 852200
email: engineering@bdr.uk.com

Client
MILLWOOD DESIGNER HOMES

Project
**POLO FARM SPORTS CLUB
LITTLEBOURNE ROAD
CANTERBURY, CT3 4AF**

Drawing
**SURFACING LAYOUT
S278 AGREEMENT PLAN**

Scale @ A1 1:200	Date 15/04/15	Drawn by DNT	Checked DdeM
Job No. 15117	Drg. No. C1002	Rev P2	