

A vertical blue-tinted image of a landscape with rolling hills and fields, serving as a background for the left side of the page.

SDP

Transport and Accessibility Appraisal

Land West of Herne Bay Road,
Broad Oak, Sturry

April 2024

Introduction

This Technical Note has been prepared on behalf of Fairfax Acquisitions Limited in support of the promotion of the site located to the west of Herne Bay Road as a location with good sustainable transport opportunities to reduce the need for travel by private car.

Site Location

The site is located to the west of Herne Bay Road and to the north of the rear of existing residential properties on Sweechgate.

Herne Bay Road (A291) is a single carriageway road running in a north-south direction with a speed limit of 40mph at its southern end, becoming 50mph as it continues north past the site. The section of Herne Bay Road immediately adjacent to the site has a footway on the western side of road. This footway swaps to the eastern side of the carriageway on the approach to the junction with Sweechgate, to the south.



Photo 1 – Herne Bay Road looking south



Photo 2 - Herne Bay Road looking north

To the north, Herne Bay Road continues through Herne to meet the A299 Thanet Way which provides connections to Ramsgate, Margate and Whitstable. Canterbury Road continues north to Herne Bay. To the south, Herne Bay Road continues south to meet the A28 in Sturry village centre. The A28 continues east towards Ramsgate and Margate, and west towards Canterbury.

Walking and Cycling

Walking and cycling isochrones have been produced to show the local area that can be reached in a 5, 10, 15 and 20 minute journey time from the site and are appended at the end of this note. Sturry village centre can be reached on foot in 20 minutes from the centre of the site.

Route 1 of the National Cycle Network is accessible from Sturry. This provides an off-road route towards Canterbury and an on-road route to the east towards Sandwich. Canterbury can be reached by cycle in 20 minutes, as can the outskirts of Herne Bay.

Public Transport

There are existing bus stops located on Herne Bay Road served by bus routes 6 and Triangle.



Photo 3 – Northbound bus stop



Photo 4 - Southbound bus stop

The timetables for local buses are appended to this report in Appendix A and the frequency of services summarised in Table 1.

Table 1 – Local bus services and their frequencies

| Service Number | Route | Monday-Friday | | Saturday | | Sunday | |
|----------------|---|---------------|------------|------------|------------|------------|------------|
| | | Daytime | Evening | Daytime | Evening | Daytime | Evening |
| Triangle | Canterbury - Whitstable - Herne Bay - Canterbury | 15 minutes | 30 minutes | 15 minutes | 30 minutes | 20 minutes | 60 minutes |
| 6 | Canterbury - Sturry - Broomfield - Beltinge - Herne Bay - Greenhill | 30 minutes | - | 30 minutes | - | - | - |

The earliest weekday departure is at 05:06 southbound and 06:31 northbound. The latest weekday departure is at 22:59 southbound and 23:30 northbound. There are a total of 12 buses in each of the peak hours 08:00-09:00 and 17:00-18:00. The location is therefore considered to be very well served by public transport.

In addition, further bus routes are available from bus stops in Sturry village centre serving destinations including Ramsgate, Broadstairs, Margate and Westwood.

The local bus routes are shown on the plan appended to this Technical Note. This also shows the destinations that can be reached from the site in 10, 20 and 30 minutes by public transport services. Both Canterbury and Herne Bay can be reached in 20 to 30 minutes.

The weekday departure times of services from the existing bus stops closest to the site are shown visually in Figure 1.



Figure 1 - Bus departure times from Herne Bay Road

The nearest railway station is Sturry, approximately a 20 minute walk from the centre of the site. The current timetable has hourly services during the day to destinations including Ramsgate, Canterbury West, Ashford International, Maidstone East and London Victoria with additional services in the peak hours.

Local Amenities

There is a range of local amenities within walking distance of the site. Broad Oak Village Stores is located at the junction of Sweechgate and Herne Bay Road. Sturry village centre is approximately 1.2km to the south of the site. This can be reached in around 20 minutes on foot and provides amenities including a pharmacy, and larger convenience store.



Photo 5 – Broad Oak Village Stores, Sweechgate Photo 6 – Convenience store, Sturry

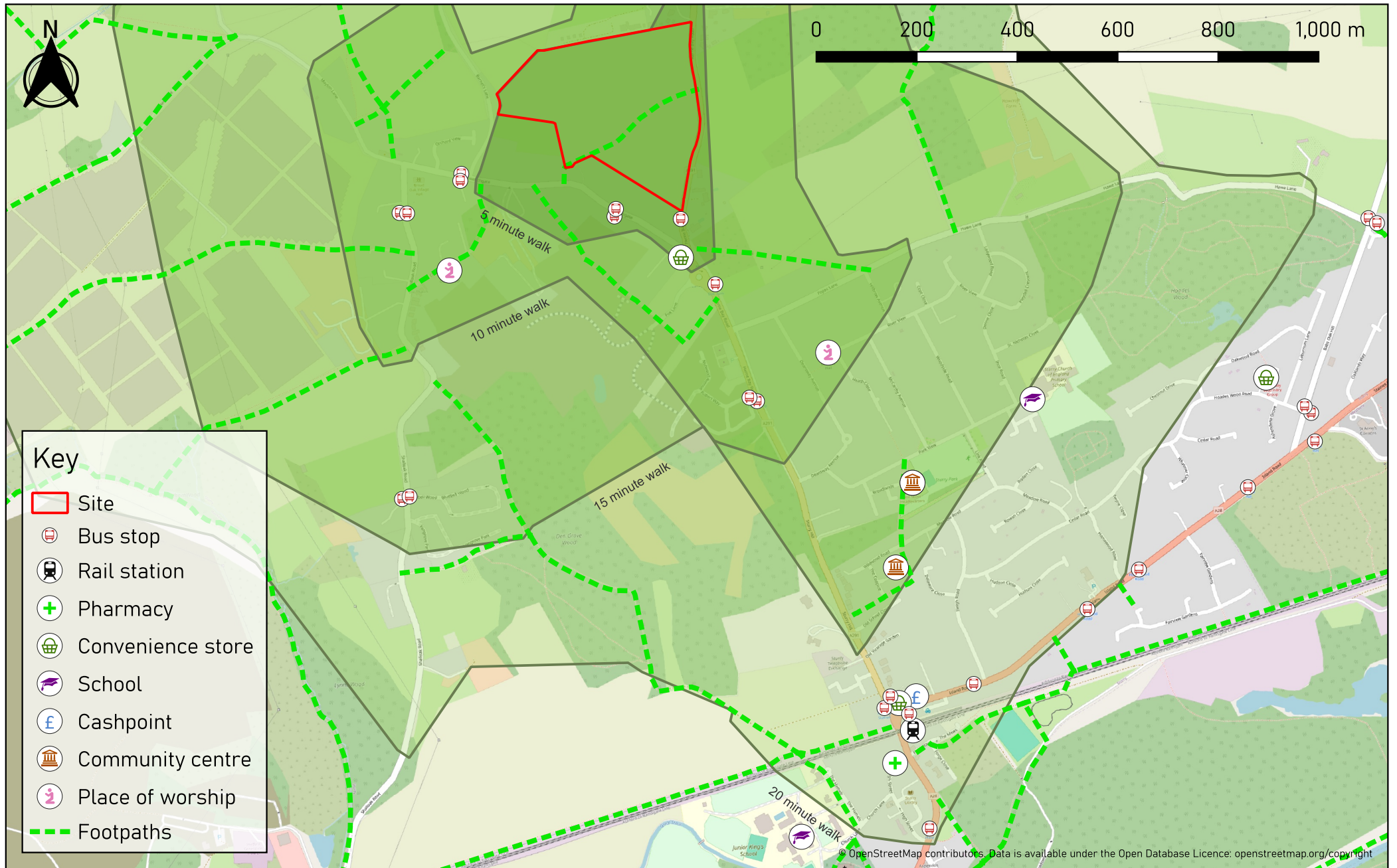
The local amenities are shown on the appended plan and shows that the site is situated in a sustainable location where local amenities serving the day-to-day needs of residents can be accessed by walking and cycling.

Summary

This technical note has been prepared in support of the potential for residential development on land to the west of Herne Bay Road. It demonstrates that the proposed development location can be accessed by means other than the private car. The site benefits from good public transport services available within walking distance of the site. Existing bus services that pass the site operate a frequent service throughout the day with services running from early morning to late evening.

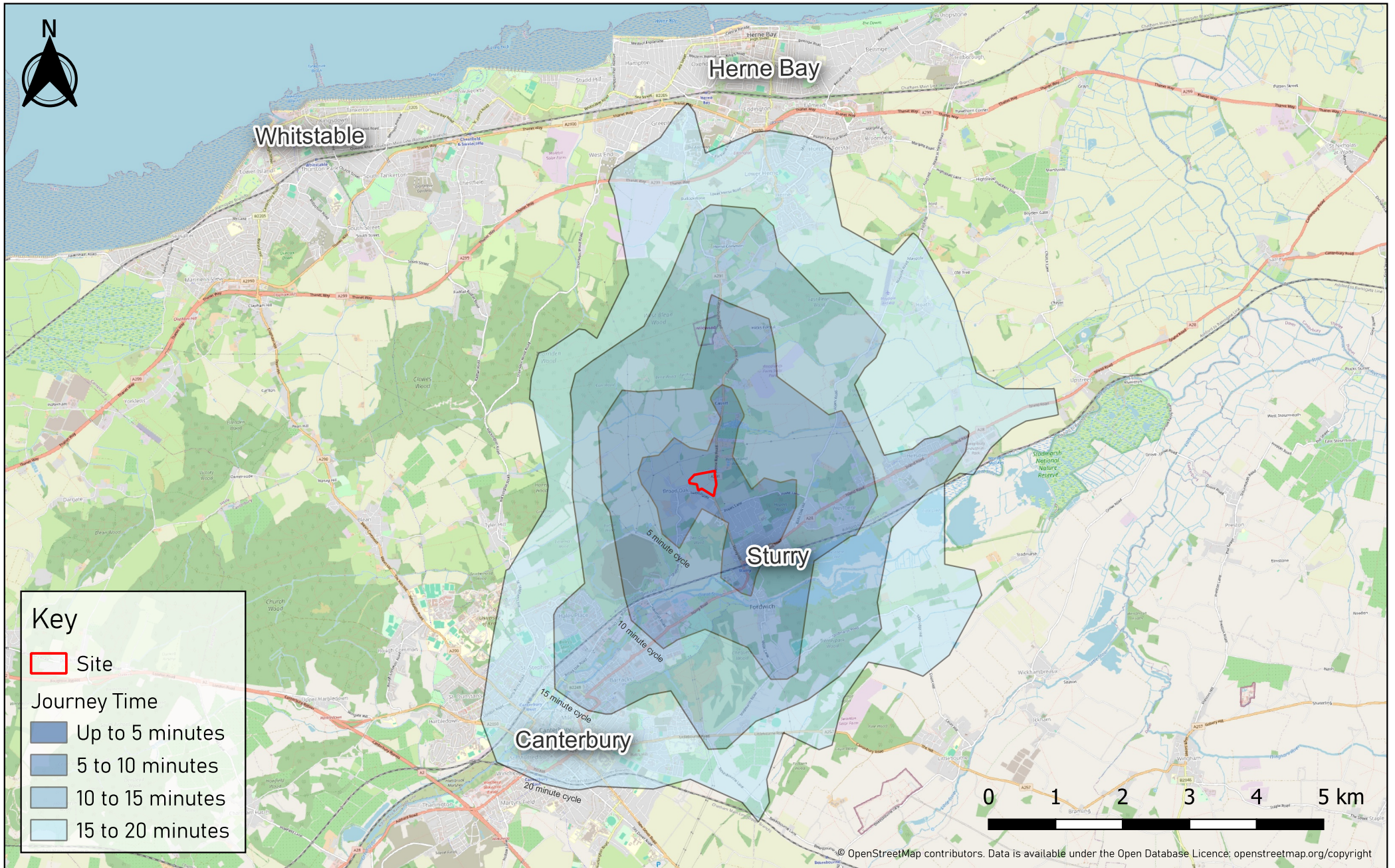
A range of local facilities is located within walking and cycling distance of the proposed site with further services available in Canterbury city centre, which is accessible by cycle, and bus and rail routes. The site is therefore considered to be in a sustainable location that is not reliant on the use of private cars by homeowners living there.

Figures

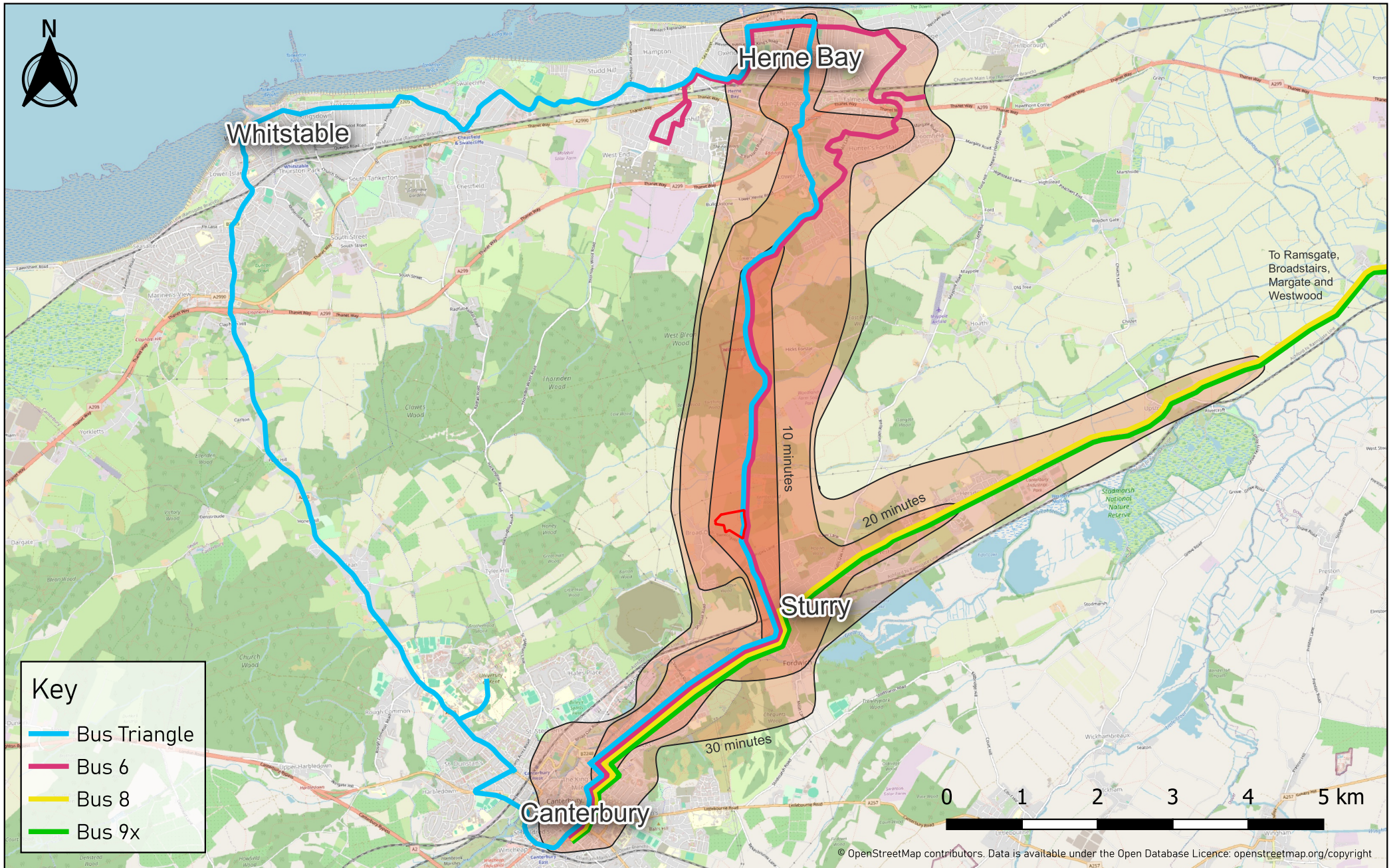


Local facilities within walking distance of the site

Land at Herne Bay Road, Broad Oak



Cycling isochrones
 Land at Herne Bay Road, Broad Oak



Local bus routes

Land at Herne Bay Road, Broad Oak

SDP

Appendix A: Public Transport Information

Canterbury - Herne Bay – Whitstable – Canterbury



Mondays to Fridays except public holidays

From 30 April 2023

| | | | | | | | | | | | | | | | | | | | | | | |
|-------------------------------------|-----------|-----------|-----------|-----------|------|-----------|-----------|------|------------|-----------|------|-----------|------|--|-----------|------|------|------|-------------------|-----------|------|-----------|
| Canterbury Bus Stn bay C4 | - | - | - | - | 0618 | - | - | 0636 | - | - | 0720 | 0735 | 0750 | | 05 | 20 | 35 | 50 | 1450 | 1505 | 1520 | |
| Sturry Railway Station | - | - | - | - | 0629 | - | - | 0647 | - | - | 0736 | 0751 | 0806 | | 21 | 36 | 51 | 06 | 1506 | 1523 | 1538 | |
| Broad Oak Sweechgate | - | - | - | - | 0631 | - | - | 0649 | - | - | 0739 | 0754 | 0809 | | 24 | 39 | 54 | 09 | 1509 | 1526 | 1541 | |
| Herne Canterbury Fields | EL | EL | EL | EL | 0636 | - | - | 0654 | - | EL | 0744 | 0759 | 0814 | | 29 | 44 | 59 | 14 | 1514 | 1531 | 1546 | |
| Queens Roundabout | 0514 | 0542 | 0608 | 0628 | 0644 | - | - | 0702 | HSL | 0731 | 0752 | 0807 | 0822 | then every 15 mins at these times | 37 | 52 | 07 | 22 | 1522 | 1541 | 1556 | |
| Herne Bay High St, Library | 0518 | 0546 | 0613 | 0633 | 0649 | - | - | 0709 | 0724 | 0738 | 0759 | 0814 | 0829 | | 44 | 59 | 14 | 29 | 1529 | 1548 | 1603 | |
| Herne Bay Railway Station | 0522 | 0550 | 0617 | 0637 | 0653 | GR | GR | 0714 | 0729 | 0743 | 0807 | 0822 | 0837 | | 52 | 07 | 22 | 37 | 1537 | 1556 | 1611 | |
| Westbrook Farm | 0525 | 0555 | 0622 | 0642 | 0658 | 0711 | 0715 | 0720 | 0735 | 0749 | 0813 | 0828 | 0843 | | 58 | 13 | 28 | 43 | until 1543 | 1602 | 1617 | |
| Tankerton Priest & Sow Corne | 0533 | 0603 | 0630 | 0650 | 0706 | 0719 | 0725 | 0730 | 0745 | 0759 | 0823 | 0838 | 0853 | | 08 | 23 | 38 | 53 | 1553 | 1612 | 1627 | |
| Whitstable Harbour Street | 0541 | 0611 | 0638 | 0658 | 0714 | 0729 | 0735 | 0740 | 0755 | 0809 | 0832 | 0847 | 0902 | | 17 | 32 | 47 | 02 | 1602 | 1621 | 1636 | |
| Whitstable Tollgate | 0546 | 0616 | 0643 | 0703 | 0721 | 0736 | 0742 | 0747 | 0802 | 0816 | 0839 | 0854 | 0909 | | 24 | 39 | 54 | 09 | 1609 | 1628 | 1643 | |
| Blean Tyler Hill Road | 0554 | 0624 | 0651 | 0711 | 0731 | 0746 | 0752 | 0757 | 0812 | 0826 | 0849 | 0904 | 0919 | | 34 | 49 | 04 | 19 | 1619 | 1638 | 1653 | |
| Rough Common Turning | 0558 | 0628 | 0655 | 0715 | 0735 | 0750 | 0756 | 0801 | 0816 | 0830 | 0853 | 0908 | 0923 | | 38 | 53 | 08 | 23 | 1623 | 1642 | 1657 | |
| University Keynes Stop A | 0602 | 0632 | 0659 | 0719 | 0739 | 0754 | 0800 | 0805 | 0820 | 0834 | 0857 | 0912 | 0927 | | 42 | 57 | 12 | 27 | 1627 | 1646 | 1701 | |
| Canterbury Bus Station | 0610 | 0640 | 0710 | 0730 | 0750 | 0805 | 0815 | 0825 | 0840 | 0854 | 0909 | 0924 | 0939 | 54 | 09 | 24 | 39 | 1639 | 1658 | 1713 | | |
| | | | | | | | | | | | | | | | | | | | | | | |
| Canterbury Bus Stn bay C4 | 1535 | 1550 | 1605 | 1620 | 1635 | 1650 | 1705 | 1720 | 1735 | 1750 | 1815 | 1835 | 1855 | 1915 | 1935 | 2005 | 2035 | 2105 | 2140 | 2210 | 2240 | 2315 |
| Sturry Railway Station | 1553 | 1608 | 1623 | 1638 | 1655 | 1710 | 1725 | 1740 | 1756 | 1811 | 1831 | 1850 | 1910 | 1928 | 1948 | 2018 | 2048 | 2118 | 2153 | 2223 | 2253 | 2328 |
| Broad Oak Sweechgate | 1556 | 1611 | 1626 | 1641 | 1658 | 1713 | 1728 | 1743 | 1759 | 1814 | 1834 | 1853 | 1912 | 1930 | 1950 | 2020 | 2050 | 2120 | 2155 | 2225 | 2255 | 2330 |
| Herne Canterbury Fields | 1601 | 1616 | 1631 | 1646 | 1703 | 1718 | 1733 | 1748 | 1804 | 1819 | 1839 | 1858 | 1917 | 1935 | 1955 | 2025 | 2055 | 2125 | 2200 | 2230 | 2300 | 2335 |
| Broomfield Gorse Lane | ↓ | ↓ | ↓ | ↓ | ↓ | ↓ | ↓ | ↓ | ↓ | ↓ | ↓ | 1906 | ↓ | ↓ | 2003 | ↓ | 2103 | ↓ | 2208 | ↓ | 2308 | ↓ |
| Queens Roundabout | 1611 | 1626 | 1641 | 1656 | 1713 | 1728 | 1743 | 1758 | 1813 | 1827 | 1845 | ↓ | 1925 | 1943 | ↓ | 2032 | ↓ | 2132 | ↓ | 2237 | ↓ | 2342 |
| Beltinge Dollies Corner | ↓ | ↓ | ↓ | ↓ | ↓ | ↓ | ↓ | ↓ | ↓ | ↓ | ↓ | 1911 | ↓ | ↓ | 2008 | ↓ | 2108 | ↓ | 2213 | ↓ | 2313 | ↓ |
| Herne Bay High St, Library | 1618 | 1633 | 1648 | 1703 | 1720 | 1735 | 1750 | 1805 | 1819 | 1831 | 1851 | 1915 | 1929 | 1950 | 2015 | 2037 | 2113 | 2137 | 2218 | 2242 | 2318 | 2346 |
| Herne Bay Railway Station | 1626 | 1641 | 1656 | 1711 | 1728 | 1743 | 1758 | 1813 | 1827 | 1836 | 1856 | 1920 | 1934 | 1957 | 2022 | 2041 | 2117 | 2141 | 2222 | 2246 | 2322 | 2350 |
| Greenhill Herne Drive | ↓ | ↓ | ↓ | ↓ | ↓ | ↓ | ↓ | ↓ | 1833 | SR | 1902 | SR | 1940 | ↓ | SR | 2045 | ↓ | 2147 | ↓ | SR | 2326 | SR |
| Westbrook Farm | 1632 | 1647 | 1702 | 1717 | 1734 | 1749 | 1804 | 1819 | 1838 | - | 1907 | - | 1945 | 2003 | - | 2049 | 2121 | 2151 | 2226 | - | 2330 | - |
| Tankerton Priest & Sow Corne | 1642 | 1657 | 1712 | 1727 | 1742 | 1757 | 1812 | 1827 | 1846 | - | 1915 | - | 1953 | 2011 | - | 2057 | 2129 | 2159 | 2234 | - | 2338 | - |
| Whitstable Harbour Street | 1651 | 1706 | 1721 | 1736 | 1751 | 1806 | 1821 | 1836 | 1855 | - | 1922 | - | 2000 | 2018 | - | 2103 | 2135 | 2205 | 2240 | - | 2344 | - |
| Whitstable Tollgate | 1658 | 1713 | 1728 | 1743 | 1758 | 1813 | 1828 | 1843 | 1902 | - | 1928 | - | 2006 | 2023 | - | 2110 | 2142 | 2212 | 2247 | - | 2351 | - |
| Blean Tyler Hill Road | 1708 | 1723 | 1738 | 1753 | 1808 | 1823 | 1838 | 1853 | 1911 | - | 1937 | - | 2015 | 2032 | - | 2117 | 2149 | 2219 | 2254 | - | 2358 | - |
| Rough Common Turning | 1712 | 1727 | 1742 | 1757 | 1812 | 1827 | 1842 | 1857 | 1914 | - | 1940 | - | 2018 | 2034 | - | 2119 | 2151 | 2221 | 2256 | - | 0000 | - |
| University Keynes Stop A | 1716 | 1731 | 1746 | 1801 | 1816 | 1831 | 1846 | 1901 | 1918 | - | 1944 | - | 2022 | 2039 | - | 2124 | 2156 | 2226 | 2301 | - | 0005 | - |
| Canterbury Bus Station | 1728 | 1743 | 1758 | 1813 | 1828 | 1843 | 1858 | 1913 | 1929 | - | 1955 | - | 2033 | 2049 | - | 2134 | 2206 | 2236 | 2311 | - | 0015 | - |

EL Starts from Eddington Lane, 1 minute before Queens Roundabout

GR Starts from Greenhill *Rowland Drive*, 11 minutes before Westbrook Farm.

HS Starts from Herne *Streetfield* (0657). Also serves Broomfield (0704), Hillborough School (0711) and Beltinge *Dollies Corner* (0717).

SR This bus continues to Sea Street roundabout.

During the daytime, most buses arrive at Herne Bay railway station 3 minutes before the time shown.

For other buses between Canterbury, Broomfield, Herne Bay and Greenhill, see route 6.

Saturdays **From 30 April 2023**

| | | | | | | | | | | | | | | | | | | | | | |
|-------------------------------------|-----------|-----------|------|------|-----------|-----------|------|------|------|------|-------|----|----|----|------|-------|------|------|------|------|------|
| Canterbury Bus Stn bay C4 | - | - | 0618 | 0636 | - | - | 0735 | 0750 | 0805 | 0820 | 35 | 50 | 05 | 20 | 1605 | 1620 | 1635 | 1655 | 1715 | | |
| Sturry Railway Station | - | - | 0629 | 0647 | - | - | 0751 | 0806 | 0821 | 0836 | 51 | 06 | 21 | 36 | 1621 | 1636 | 1651 | 1711 | 1731 | | |
| Broad Oak Sweechgate | - | - | 0631 | 0649 | - | - | 0754 | 0809 | 0824 | 0839 | 54 | 09 | 24 | 39 | 1624 | 1639 | 1654 | 1714 | 1734 | | |
| Herne Canterbury Fields | EL | EL | 0636 | 0654 | HS | EL | 0759 | 0814 | 0829 | 0844 | 59 | 14 | 29 | 44 | 1629 | 1644 | 1659 | 1719 | 1739 | | |
| Queens Roundabout | 0514 | 0608 | 0644 | 0702 | ↓ | 0731 | 0807 | 0822 | 0837 | 0852 | then | 07 | 22 | 37 | 52 | 1637 | 1652 | 1707 | 1727 | 1747 | |
| Herne Bay High St, Library | 0518 | 0613 | 0649 | 0709 | 0724 | 0738 | 0814 | 0829 | 0844 | 0859 | every | 14 | 29 | 44 | 59 | 1644 | 1659 | 1714 | 1734 | 1754 | |
| Herne Bay Railway Station | 0522 | 0617 | 0653 | 0714 | 0729 | 0743 | 0822 | 0837 | 0852 | 0907 | 15 | 22 | 37 | 52 | 07 | 1652 | 1707 | 1722 | 1742 | 1802 | |
| Westbrook Farm | 0525 | 0622 | 0658 | 0720 | 0735 | 0749 | 0828 | 0843 | 0858 | 0913 | mins | 28 | 43 | 58 | 13 | until | 1658 | 1713 | 1728 | 1748 | 1808 |
| Tankerton Priest & Sow Corne | 0533 | 0630 | 0706 | 0730 | 0745 | 0759 | 0838 | 0853 | 0908 | 0923 | at | 38 | 53 | 08 | 23 | 1708 | 1723 | 1738 | 1758 | 1818 | |
| Whitstable Harbour Street | 0541 | 0638 | 0714 | 0739 | 0754 | 0808 | 0847 | 0902 | 0917 | 0932 | these | 47 | 02 | 17 | 32 | 1717 | 1732 | 1747 | 1807 | 1827 | |
| Whitstable Tollgate | 0546 | 0643 | 0721 | 0746 | 0801 | 0815 | 0854 | 0909 | 0924 | 0939 | times | 54 | 09 | 24 | 39 | 1724 | 1739 | 1754 | 1814 | 1834 | |
| Blean Tyler Hill Road | 0554 | 0651 | 0731 | 0756 | 0811 | 0825 | 0904 | 0919 | 0934 | 0949 | 04 | 19 | 34 | 49 | 1734 | 1749 | 1804 | 1824 | 1844 | | |
| Rough Common Turning | 0558 | 0655 | 0735 | 0800 | 0815 | 0829 | 0908 | 0923 | 0938 | 0953 | 08 | 23 | 38 | 53 | 1738 | 1753 | 1808 | 1828 | 1848 | | |
| University Keynes Stop A | 0602 | 0659 | 0739 | 0804 | 0819 | 0833 | 0912 | 0927 | 0942 | 0957 | 12 | 27 | 42 | 57 | 1742 | 1757 | 1812 | 1832 | 1852 | | |
| Canterbury Bus Station | 0610 | 0710 | 0750 | 0816 | 0831 | 0845 | 0924 | 0939 | 0954 | 1009 | 24 | 39 | 54 | 09 | 1754 | 1809 | 1824 | 1844 | 1904 | | |

| | | | | | | | | | | | | | | |
|-------------------------------------|------|-----------|------|-----------|------|------|-----------|------|------|------|------|-----------|------|-----------|
| Canterbury Bus Stn bay C4 | 1735 | 1755 | 1815 | 1835 | 1855 | 1915 | 1935 | 2005 | 2035 | 2105 | 2140 | 2210 | 2240 | 2315 |
| Sturry Railway Station | 1751 | 1811 | 1831 | 1850 | 1910 | 1928 | 1948 | 2018 | 2048 | 2118 | 2153 | 2223 | 2253 | 2328 |
| Broad Oak Sweechgate | 1754 | 1814 | 1834 | 1853 | 1912 | 1930 | 1950 | 2020 | 2050 | 2120 | 2155 | 2225 | 2255 | 2330 |
| Herne Canterbury Fields | 1759 | 1819 | 1839 | 1858 | 1917 | 1935 | 1955 | 2025 | 2055 | 2125 | 2200 | 2230 | 2300 | 2335 |
| Broomfield Gorse Lane | ↓ | ↓ | ↓ | 1906 | ↓ | ↓ | 2003 | ↓ | 2103 | ↓ | 2208 | ↓ | 2308 | ↓ |
| Queens Roundabout | 1807 | 1827 | 1845 | ↓ | 1925 | 1943 | ↓ | 2032 | ↓ | 2132 | ↓ | 2237 | ↓ | 2342 |
| Beltinge Dollies Corner | ↓ | ↓ | ↓ | 1911 | ↓ | ↓ | 2008 | ↓ | 2108 | ↓ | 2213 | ↓ | 2313 | ↓ |
| Herne Bay High St, Library | 1812 | 1831 | 1851 | 1915 | 1929 | 1950 | 2015 | 2037 | 2113 | 2137 | 2218 | 2242 | 2318 | 2346 |
| Herne Bay Railway Station | 1817 | 1836 | 1856 | 1920 | 1934 | 1957 | 2022 | 2041 | 2117 | 2141 | 2222 | 2246 | 2322 | 2350 |
| Greenhill Herne Drive | 1822 | SR | 1902 | SR | 1940 | ↓ | SR | 2045 | ↓ | 2147 | ↓ | SR | 2326 | SR |
| Westbrook Farm | 1828 | - | 1907 | - | 1945 | 2003 | - | 2049 | 2121 | 2151 | 2226 | - | 2330 | - |
| Tankerton Priest & Sow Corne | 1838 | - | 1915 | - | 1953 | 2011 | - | 2057 | 2129 | 2159 | 2234 | - | 2338 | - |
| Whitstable Harbour Street | 1847 | - | 1922 | - | 2000 | 2018 | - | 2103 | 2135 | 2205 | 2240 | - | 2344 | - |
| Whitstable Tollgate | 1854 | - | 1928 | - | 2006 | 2023 | - | 2110 | 2142 | 2212 | 2247 | - | 2351 | - |
| Blean Tyler Hill Road | 1904 | - | 1937 | - | 2015 | 2032 | - | 2117 | 2149 | 2219 | 2254 | - | 2358 | - |
| Rough Common Turning | 1908 | - | 1940 | - | 2018 | 2034 | - | 2119 | 2151 | 2221 | 2256 | - | 0000 | - |
| University Keynes Stop A | 1912 | - | 1944 | - | 2022 | 2039 | - | 2124 | 2156 | 2226 | 2301 | - | 0005 | - |
| Canterbury Bus Station | 1924 | - | 1955 | - | 2033 | 2049 | - | 2134 | 2206 | 2236 | 2311 | - | 0015 | - |

EL Starts from Eddington Lane, 1 minute before Queens Roundabout

HS Starts from Herne *Streetfield* (0657). Also serves Broomfield (0704), Hillborough School (0711) and Beltinge *Dollies Corner* (0717).

SR This bus continues to Sea Street roundabout.

During the daytime, most buses arrive at Herne Bay railway station 3 minutes before the time shown.

For other buses between Canterbury, Broomfield, Herne Bay and Greenhill, see route 6.

Canterbury - Herne Bay – Whitstable – Canterbury

► **Triangle**

Sundays and public holidays

From 30 April 2023

| | | | | | | | | | | | | | |
|------------------------------------|-----------|-----------|-----------|------|------|------|------|------|------|------|------|------|------|
| Canterbury Bus Stn bay C4 | - | - | - | 0755 | 0820 | 0845 | 0915 | 0935 | 0955 | 1015 | 1035 | 1055 | 1115 |
| Sturry Railway Station | - | - | - | 0805 | 0830 | 0855 | 0925 | 0945 | 1005 | 1025 | 1045 | 1105 | 1125 |
| Broad Oak Sweechgate | - | - | - | 0807 | 0832 | 0857 | 0927 | 0947 | 1007 | 1027 | 1047 | 1107 | 1127 |
| Herne Canterbury Fields | - | - | - | 0812 | 0837 | 0902 | 0932 | 0952 | 1012 | 1032 | 1052 | 1112 | 1132 |
| Broomfield Gorse Lane | EL | EL | EL | 0821 | ↓ | 0911 | ↓ | 1001 | ↓ | ↓ | 1101 | ↓ | ↓ |
| Queens Roundabout | 0611 | 0728 | 0758 | ↓ | 0844 | ↓ | 0939 | ↓ | 1019 | 1039 | ↓ | 1119 | 1139 |
| Beltinge Dollies Corner | ↓ | ↓ | ↓ | 0826 | ↓ | 0916 | ↓ | 1007 | ↓ | ↓ | 1107 | ↓ | ↓ |
| Herne Bay High St, Library | 0614 | 0731 | 0801 | 0831 | 0850 | 0921 | 0946 | 1011 | 1026 | 1046 | 1111 | 1126 | 1146 |
| Herne Bay Railway Station | 0618 | 0735 | 0805 | 0838 | 0854 | 0928 | 0953 | 1018 | 1033 | 1053 | 1118 | 1133 | 1153 |
| Greenhill Herne Drive | ↓ | 0740 | 0810 | ↓ | 0859 | ↓ | 0958 | ↓ | 1038 | 1058 | ↓ | 1138 | 1158 |
| Westbrook Farm | 0622 | 0744 | 0814 | 0842 | 0903 | 0932 | 1002 | 1022 | 1042 | 1102 | 1122 | 1142 | 1202 |
| Tankerton Priest & Sow Corn | 0629 | 0752 | 0822 | 0850 | 0911 | 0940 | 1010 | 1030 | 1050 | 1110 | 1130 | 1150 | 1210 |
| Whitstable Harbour Street | 0638 | 0802 | 0832 | 0900 | 0921 | 0950 | 1020 | 1040 | 1100 | 1120 | 1140 | 1200 | 1220 |
| Whitstable Tollgate | 0643 | 0807 | 0837 | 0905 | 0926 | 0955 | 1025 | 1045 | 1105 | 1125 | 1145 | 1205 | 1225 |
| Blean Tyler Hill Road | 0652 | 0816 | 0846 | 0914 | 0935 | 1004 | 1034 | 1054 | 1114 | 1134 | 1154 | 1214 | 1234 |
| Rough Common Turning | 0654 | 0818 | 0848 | 0916 | 0937 | 1006 | 1036 | 1056 | 1116 | 1136 | 1156 | 1216 | 1236 |
| University Keynes Stop A | 0700 | 0824 | 0854 | 0922 | 0943 | 1012 | 1042 | 1102 | 1122 | 1142 | 1202 | 1222 | 1242 |
| Canterbury Bus Station | 0712 | 0836 | 0906 | 0934 | 0955 | 1024 | 1054 | 1114 | 1134 | 1154 | 1214 | 1234 | 1254 |

| | | | | | | | | | | | | | |
|------------------------------------|------|--------------|----|----|----|--------------|------|------|------|------|------|------|------|
| Canterbury Bus Stn bay C4 | 1135 | | 55 | 15 | 35 | | 1535 | 1555 | 1615 | 1635 | 1655 | 1715 | 1730 |
| Sturry Railway Station | 1145 | | 05 | 25 | 45 | | 1545 | 1605 | 1625 | 1645 | 1705 | 1725 | 1740 |
| Broad Oak Sweechgate | 1147 | | 07 | 27 | 47 | | 1547 | 1607 | 1627 | 1647 | 1707 | 1727 | 1742 |
| Herne Canterbury Fields | 1152 | | 12 | 32 | 52 | | 1552 | 1612 | 1632 | 1652 | 1712 | 1732 | 1747 |
| Broomfield Gorse Lane | 1201 | | ↓ | ↓ | 01 | | 1601 | ↓ | ↓ | 1701 | ↓ | ↓ | 1756 |
| Queens Roundabout | ↓ | then | 19 | 39 | ↓ | | ↓ | 1619 | 1639 | ↓ | 1719 | 1739 | ↓ |
| Beltinge Dollies Corner | 1207 | at | ↓ | ↓ | 07 | | 1607 | ↓ | ↓ | 1706 | ↓ | ↓ | 1801 |
| Herne Bay High St, Library | 1211 | these | 26 | 46 | 11 | | 1611 | 1626 | 1646 | 1711 | 1726 | 1746 | 1806 |
| Herne Bay Railway Station | 1218 | mins | 33 | 53 | 18 | until | 1618 | 1633 | 1653 | 1718 | 1733 | 1750 | 1813 |
| Greenhill Herne Drive | ↓ | past | 38 | 58 | ↓ | | ↓ | 1638 | 1658 | ↓ | 1738 | 1755 | 1818 |
| Westbrook Farm | 1222 | each | 42 | 02 | 22 | | 1622 | 1642 | - | 1722 | 1742 | - | 1822 |
| Tankerton Priest & Sow Corn | 1230 | hour | 50 | 10 | 30 | | 1630 | 1650 | - | 1730 | 1750 | - | 1830 |
| Whitstable Harbour Street | 1240 | | 00 | 20 | 40 | | 1640 | 1700 | - | 1740 | 1800 | - | 1840 |
| Whitstable Tollgate | 1245 | | 05 | 25 | 45 | | 1645 | 1705 | - | 1745 | 1805 | - | 1845 |
| Blean Tyler Hill Road | 1254 | | 14 | 34 | 54 | | 1654 | 1714 | - | 1754 | 1814 | - | 1854 |
| Rough Common Turning | 1256 | | 16 | 36 | 56 | | 1656 | 1716 | - | 1756 | 1816 | - | 1856 |
| University Keynes Stop A | 1302 | | 22 | 42 | 02 | | 1702 | 1722 | - | 1802 | 1822 | - | 1902 |
| Canterbury Bus Station | 1314 | | 34 | 54 | 14 | | 1714 | 1734 | - | 1814 | 1834 | - | 1914 |

| | | | | | | | | |
|------------------------------------|-----------|------|-----------|------|------|------|-----------|-----------|
| Canterbury Bus Stn bay C4 | 1750 | 1820 | 1850 | 1920 | 2020 | 2120 | 2220 | 2300 |
| Sturry Railway Station | 1800 | 1830 | 1900 | 1930 | 2030 | 2130 | 2230 | 2308 |
| Broad Oak Sweechgate | 1802 | 1832 | 1902 | 1932 | 2032 | 2132 | 2232 | 2310 |
| Herne Canterbury Fields | 1807 | 1837 | 1907 | 1937 | 2037 | 2137 | 2237 | 2315 |
| Broomfield Gorse Lane | ↓ | 1846 | ↓ | 1946 | 2046 | 2146 | 2246 | ↓ |
| Queens Roundabout | 1814 | 1850 | 1914 | 1950 | 2050 | 2150 | 2250 | 2322 |
| Beltinge Dollies Corner | ↓ | 1854 | ↓ | 1954 | 2054 | 2154 | 2254 | ↓ |
| Herne Bay High St, Library | 1819 | 1859 | 1919 | 1959 | 2059 | 2159 | 2259 | 2326 |
| Herne Bay Railway Station | 1822 | 1903 | 1922 | 2003 | 2103 | 2203 | 2303 | 2330 |
| Greenhill Herne Drive | SR | 1907 | SR | 2007 | 2107 | 2207 | SR | SR |
| Westbrook Farm | - | 1911 | - | 2011 | 2111 | 2211 | - | - |
| Tankerton Priest & Sow Corn | - | 1918 | - | 2018 | 2118 | 2218 | - | - |
| Whitstable Harbour Street | - | 1925 | - | 2025 | 2125 | 2225 | - | - |
| Whitstable Tollgate | - | 1930 | - | 2030 | 2130 | 2230 | - | - |
| Blean Tyler Hill Road | - | 1939 | - | 2039 | 2139 | 2239 | - | - |
| Rough Common Turning | - | 1941 | - | 2041 | 2141 | 2241 | - | - |
| University Keynes Stop A | - | 1947 | - | 2047 | 2147 | 2247 | - | - |
| Canterbury Bus Station | - | 1959 | - | 2059 | 2159 | 2259 | - | - |

Notes

EL

Starts from Eddington Lane, 1 min before Queens Roundabout

SR

This bus continues to Sea Street roundabout.

Canterbury – Whitstable – Herne Bay - Canterbury

▶ Triangle

Mondays to Fridays except public holidays

From 30 April 2023

| | | | | | | | | | | | | | | |
|-------------------------------------|-----------|-----------|-------|------|------|-----------|------|------|------|------|------|------|------|------|
| Canterbury Bus Stn bay B1 | | | 0520 | | 0620 | | | | 0655 | 0715 | 0735 | 0750 | 0805 | 0820 |
| St Dunstan's Westgate Towers | | | 0524 | | 0625 | | | | 0702 | 0722 | 0742 | 0800 | 0815 | 0827 |
| University Keynes Stop B | | | 0530 | | 0631 | | | | 0710 | 0730 | 0752 | 0812 | 0827 | 0835 |
| Rough Common Turning | | | 0533 | | 0634 | | | | 0714 | 0734 | 0756 | 0816 | 0831 | 0838 |
| Blean Tyler Hill Road | | | 0536 | | 0637 | | | | 0717 | 0737 | 0759 | 0819 | 0834 | 0841 |
| Whitstable Borstal Hill Top | | | 0543 | | 0644 | | | | 0725 | 0745 | 0807 | 0827 | 0842 | 0849 |
| Whitstable Horsebridge | | | 0548 | | 0649 | | | | 0733 | 0753 | 0815 | 0835 | 0850 | 0856 |
| Tankerton Priest & Sow Cnr | | | 0554 | | 0655 | | | | 0741 | 0801 | 0823 | 0843 | 0858 | 0903 |
| Westbrook Farm | | | 0602 | | 0703 | GR | | | 0750 | 0810 | 0832 | 0852 | 0907 | 0912 |
| Greenhill Herne Drive | SR | SR | 06r14 | 0636 | ↓ | 0710 | 0723 | 0740 | ↓ | ↓ | ↓ | ↓ | ↓ | ↓ |
| Herne Bay Railway Stn | 0446 | 0546 | 0619 | 0644 | 0712 | 0719 | 0733 | 0749 | 0800 | 0820 | 0842 | 0902 | 0917 | 0922 |
| Herne Bay High St, Fire Stn | 0450 | 0550 | 0625 | 0651 | 0719 | 0726 | 0740 | 0756 | 0807 | 0827 | 0849 | 0909 | 0924 | 0929 |
| Queens Roundabout | 0453 | 0553 | 0628 | 0654 | 0723 | 0731 | 0745 | 0801 | 0812 | 0832 | 0853 | 0913 | 0928 | 0933 |
| Herne Church | 0459 | 0559 | 0634 | 0700 | 0730 | 0738 | 0752 | 0808 | 0819 | 0839 | 0900 | 0920 | 0935 | 0940 |
| Broad Oak Sweechgate | 0505 | 0605 | 0641 | 0707 | 0739 | 0747 | 0801 | 0817 | 0828 | 0848 | 0907 | 0927 | 0942 | 0947 |
| Sturry Railway Station | 0507 | 0607 | 0643 | 0710 | 0744 | 0752 | 0806 | 0822 | 0833 | 0853 | 0910 | 0930 | 0945 | 0950 |
| Sturry Road ASDA | 0513 | 0613 | 0649 | 0716 | 0750 | 0759 | 0813 | 0829 | 0843 | 0903 | 0917 | 0937 | 0952 | 0957 |
| Canterbury Bus Station | 0518 | 0618 | 0654 | 0723 | 0757 | 0809 | 0823 | 0839 | 0853 | 0913 | 0924 | 0944 | 0959 | 1004 |

| | | | | | | | | | | | | | | |
|-------------------------------------|------|------|------|-------|----|----|----|----|-------|------|------|------|------|------|
| Canterbury Bus Stn bay B1 | 0835 | 0850 | 0905 | | 05 | 20 | 35 | 50 | | 1705 | 1720 | 1735 | 1750 | 1805 |
| St Dunstan's Westgate Towers | 0842 | 0857 | 0912 | | 12 | 27 | 42 | 57 | | 1712 | 1730 | 1745 | 1800 | 1812 |
| University Keynes Stop B | 0850 | 0905 | 0920 | | 20 | 35 | 50 | 15 | | 1720 | 1738 | 1753 | 1808 | 1820 |
| Rough Common Turning | 0853 | 0908 | 0923 | | 23 | 38 | 53 | 08 | | 1723 | 1741 | 1756 | 1811 | 1823 |
| Blean Tyler Hill Road | 0856 | 0911 | 0926 | | 26 | 41 | 56 | 11 | | 1726 | 1744 | 1759 | 1814 | 1826 |
| Whitstable Borstal Hill Top | 0904 | 0919 | 0934 | then | 34 | 49 | 04 | 19 | | 1734 | 1752 | 1807 | 1822 | 1834 |
| Whitstable Horsebridge | 0911 | 0926 | 0941 | every | 41 | 56 | 11 | 26 | | 1741 | 1759 | 1814 | 1829 | 1841 |
| Tankerton Priest & Sow Cnr | 0918 | 0933 | 0948 | 15 | 48 | 03 | 18 | 33 | | 1748 | 1806 | 1821 | 1836 | 1848 |
| Westbrook Farm | 0927 | 0942 | 0957 | mins | 57 | 12 | 27 | 42 | until | 1757 | 1815 | 1830 | 1845 | 1857 |
| Greenhill Herne Drive | ↓ | ↓ | ↓ | at | ↓ | ↓ | ↓ | ↓ | | ↓ | ↓ | ↓ | ↓ | ↓ |
| Herne Bay Railway Stn | 0937 | 0952 | 1007 | these | 07 | 22 | 37 | 52 | | 1807 | 1825 | 1840 | 1855 | 1907 |
| Herne Bay High St, Fire Stn | 0944 | 0959 | 1014 | times | 14 | 29 | 44 | 59 | | 1814 | 1832 | 1847 | 1902 | 1914 |
| Queens Roundabout | 0948 | 1003 | 1018 | | 18 | 33 | 48 | 03 | | 1818 | 1836 | 1851 | 1906 | 1918 |
| Herne Church | 0955 | 1010 | 1025 | | 25 | 40 | 55 | 10 | | 1825 | 1843 | 1858 | 1913 | 1925 |
| Broad Oak Sweechgate | 1002 | 1017 | 1032 | | 32 | 47 | 02 | 17 | | 1832 | 1850 | 1905 | 1920 | 1932 |
| Sturry Railway Station | 1005 | 1020 | 1035 | | 35 | 50 | 05 | 20 | | 1835 | 1853 | 1908 | 1923 | 1935 |
| Sturry Road ASDA | 1012 | 1027 | 1042 | | 42 | 57 | 12 | 27 | | 1842 | 1900 | 1915 | 1930 | 1942 |
| Canterbury Bus Station | 1019 | 1034 | 1049 | | 49 | 04 | 19 | 34 | | 1849 | 1907 | 1922 | 1937 | 1949 |

| | | | | | | | | | | | | | |
|-------------------------------------|------|------|------|-----------|------|-----------|------|------|------|------|-----------|-----------|-----------|
| Canterbury Bus Stn bay B1 | 1820 | 1840 | 1900 | 1920 | 1940 | 1955 | 2015 | 2045 | 2115 | 2145 | 2215 | 2245 | 2315 |
| St Dunstan's Westgate Towers | 1827 | 1846 | 1906 | 1926 | 1946 | 2001 | 2021 | 2051 | 2121 | 2151 | 2221 | 2251 | 2321 |
| University Keynes Stop B | 1835 | 1853 | 1913 | 1933 | 1952 | 2007 | 2027 | 2057 | 2127 | 2157 | 2227 | 2257 | 2327 |
| Rough Common Turning | 1838 | 1856 | 1916 | 1936 | 1954 | 2009 | 2029 | 2059 | 2129 | 2159 | 2229 | 2259 | 2329 |
| Blean Tyler Hill Road | 1841 | 1859 | 1919 | 1939 | 1957 | 2012 | 2032 | 2102 | 2132 | 2202 | 2232 | 2302 | 2332 |
| Whitstable Borstal Hill Top | 1849 | 1906 | 1926 | 1946 | 2004 | 2019 | 2039 | 2109 | 2139 | 2209 | 2239 | 2309 | 2339 |
| Whitstable Horsebridge | 1856 | 1913 | 1933 | 1953 | 2010 | 2025 | 2045 | 2115 | 2145 | 2215 | 2245 | 2315 | 2345 |
| Tankerton Priest & Sow Cnr | 1903 | 1920 | 1940 | 2000 | 2017 | 2032 | 2052 | 2122 | 2152 | 2222 | 2252 | 2322 | 2352 |
| Westbrook Farm | 1912 | 1927 | 1947 | 2007 | 2023 | 2038 | 2058 | 2128 | 2158 | 2228 | 2258 | 2328 | 2358 |
| Greenhill Herne Drive | 1917 | ↓ | ↓ | 2012 | ↓ | ↓ | 2103 | ↓ | 2203 | ↓ | 2303 | ↓ | ↓ |
| Herne Bay Railway Stn | 1927 | 1936 | 1956 | 2018 | 2029 | 2044 | 2109 | 2134 | 2209 | 2234 | 2309 | 2334 | 0004 |
| Herne Bay High St, Fire Stn | 1934 | 1943 | 2003 | 2025 | 2036 | 2048 | 2113 | 2138 | 2213 | 2238 | 2313 | 2338 | 0008 |
| Beltinge Dollies Corner | ↓ | 1948 | ↓ | ↓ | 2041 | ↓ | ↓ | 2143 | ↓ | 2243 | ↓ | ↓ | ↓ |
| Queens Roundabout | 1938 | ↓ | 2008 | 2030 | ↓ | 2051 | 2117 | ↓ | 2217 | ↓ | 2316 | 2341 | 0011 |
| Broomfield Gorse Lane | ↓ | 1953 | ↓ | EL | 2046 | EL | - | 2148 | - | 2248 | EL | EL | EL |
| Herne Church | 1945 | 1959 | 2014 | - | 2052 | - | 2122 | 2154 | 2222 | 2254 | | | |
| Broad Oak Sweechgate | 1952 | 2006 | 2021 | - | 2058 | - | 2127 | 2159 | 2227 | 2259 | | | |
| Sturry Railway Station | 1954 | 2008 | 2023 | - | 2100 | - | 2129 | 2201 | 2229 | 2301 | | | |
| Sturry Road ASDA | 2001 | 2013 | 2028 | - | 2104 | - | 2133 | 2205 | 2233 | 2305 | | | |
| Canterbury Bus Station | 2008 | 2019 | 2034 | - | 2110 | - | 2139 | 2211 | 2239 | 2311 | | | |

For notes, see page 7

Canterbury – Whitstable – Herne Bay - Canterbury

▶ Triangle

Saturdays

From 30 April 2023

| | | | | | | | | | | | | | | |
|-------------------------------------|-----------|-----------|-------|------|------|------|------|------|------|------|------|------|------|------|
| Canterbury Bus Stn bay B1 | - | - | 0520 | - | 0620 | - | 0655 | 0715 | 0735 | 0755 | 0815 | 0835 | 0850 | 0905 |
| St Dunstan`s Westgate Towers | - | - | 0524 | - | 0625 | - | 0702 | 0722 | 0742 | 0802 | 0822 | 0842 | 0857 | 0912 |
| University Keynes Stop B | - | - | 0530 | - | 0631 | - | 0710 | 0730 | 0752 | 0810 | 0830 | 0850 | 0905 | 0920 |
| Rough Common Turning | - | - | 0533 | - | 0634 | - | 0714 | 0734 | 0756 | 0814 | 0834 | 0853 | 0908 | 0923 |
| Blean Tyler Hill Road | - | - | 0536 | - | 0637 | - | 0717 | 0737 | 0759 | 0817 | 0837 | 0856 | 0911 | 0926 |
| Whitstable Borstal Hill Top | - | - | 0543 | - | 0644 | - | 0725 | 0745 | 0807 | 0825 | 0845 | 0904 | 0919 | 0934 |
| Whitstable Horsebridge | - | - | 0548 | - | 0649 | - | 0733 | 0753 | 0815 | 0833 | 0853 | 0911 | 0926 | 0941 |
| Tankerton Priest & Sow Cnr | - | - | 0554 | - | 0655 | - | 0741 | 0801 | 0823 | 0841 | 0901 | 0918 | 0933 | 0948 |
| Westbrook Farm | - | - | 0602 | - | 0703 | - | 0750 | 0810 | 0832 | 0850 | 0910 | 0927 | 0942 | 0957 |
| Greenhill Herne Drive | SR | SR | 06r11 | 0636 | ↓ | 0723 | ↓ | ↓ | ↓ | ↓ | ↓ | ↓ | ↓ | ↓ |
| Herne Bay Railway Stn | 0446 | 0546 | 0619 | 0644 | 0712 | 0733 | 0800 | 0820 | 0840 | 0900 | 0920 | 0937 | 0952 | 1007 |
| Herne Bay High St, Fire Stn | 0450 | 0550 | 0625 | 0651 | 0719 | 0740 | 0807 | 0827 | 0847 | 0907 | 0927 | 0944 | 0959 | 1014 |
| Queens Roundabout | 0453 | 0553 | 0628 | 0654 | 0723 | 0745 | 0812 | 0832 | 0851 | 0911 | 0931 | 0948 | 1003 | 1018 |
| Herne Church | 0459 | 0559 | 0634 | 0700 | 0730 | 0752 | 0819 | 0839 | 0858 | 0918 | 0938 | 0955 | 1010 | 1025 |
| Broad Oak Sweechgate | 0505 | 0605 | 0641 | 0707 | 0739 | 0801 | 0828 | 0848 | 0905 | 0925 | 0945 | 1002 | 1017 | 1032 |
| Sturry Railway Station | 0507 | 0607 | 0643 | 0710 | 0744 | 0806 | 0833 | 0853 | 0908 | 0928 | 0948 | 1005 | 1020 | 1035 |
| Sturry Road ASDA | 0513 | 0613 | 0649 | 0716 | 0750 | 0813 | 0840 | 0900 | 0915 | 0935 | 0955 | 1012 | 1027 | 1042 |
| Canterbury Bus Station | 0518 | 0618 | 0654 | 0723 | 0757 | 0820 | 0847 | 0907 | 0922 | 0942 | 1002 | 1019 | 1034 | 1049 |

| | | | | | | | | | | | | | |
|--|------|------|------|-------|----|----|----|----|-------|------|------|------|------|
| Canterbury Bus Stn bay B1 | 0920 | 0935 | 0950 | | 05 | 20 | 35 | 50 | | 1705 | 1720 | 1740 | 1800 |
| St Dunstan`s Westgate Towers | 0927 | 0942 | 0957 | | 12 | 27 | 42 | 57 | | 1712 | 1727 | 1747 | 1807 |
| University Keynes Stop B | 0935 | 0950 | 1005 | | 20 | 35 | 50 | 15 | | 1720 | 1735 | 1755 | 1815 |
| Rough Common Turning | 0938 | 0953 | 1008 | | 23 | 38 | 53 | 08 | | 1723 | 1738 | 1758 | 1818 |
| Blean Tyler Hill Road | 0941 | 0956 | 1011 | | 26 | 41 | 56 | 11 | | 1726 | 1741 | 1801 | 1821 |
| Whitstable Borstal Hill Top | 0949 | 1004 | 1019 | then | 34 | 49 | 04 | 19 | | 1734 | 1749 | 1809 | 1829 |
| Whitstable Horsebridge | 0956 | 1011 | 1026 | every | 41 | 56 | 11 | 26 | | 1741 | 1756 | 1816 | 1836 |
| Tankerton Priest & Sow Cnr | 1003 | 1018 | 1033 | 15 | 48 | 03 | 18 | 33 | | 1748 | 1803 | 1823 | 1843 |
| Westbrook Farm | 1012 | 1027 | 1042 | mins | 57 | 12 | 27 | 42 | until | 1757 | 1812 | 1832 | 1852 |
| Greenhill Herne Drive | ↓ | ↓ | ↓ | at | ↓ | ↓ | ↓ | ↓ | | ↓ | ↓ | ↓ | ↓ |
| Herne Bay Railway Stn | 1022 | 1037 | 1052 | these | 07 | 22 | 37 | 52 | | 1807 | 1822 | 1842 | 1902 |
| Herne Bay High St, Fire Station | 1029 | 1044 | 1059 | times | 14 | 29 | 44 | 59 | | 1814 | 1829 | 1849 | 1909 |
| Queens Roundabout | 1033 | 1048 | 1103 | | 18 | 33 | 48 | 03 | | 1818 | 1829 | 1849 | 1909 |
| Herne Church | 1040 | 1055 | 1110 | | 25 | 40 | 55 | 10 | | 1825 | 1840 | 1900 | 1920 |
| Broad Oak Sweechgate | 1047 | 1102 | 1117 | | 32 | 47 | 02 | 17 | | 1832 | 1847 | 1907 | 1927 |
| Sturry Railway Station | 1050 | 1105 | 1120 | | 35 | 50 | 05 | 20 | | 1835 | 1850 | 1910 | 1930 |
| Sturry Road ASDA | 1057 | 1112 | 1127 | | 42 | 57 | 12 | 27 | | 1842 | 1857 | 1917 | 1937 |
| Canterbury Bus Station | 1104 | 1119 | 1134 | | 49 | 04 | 19 | 34 | | 1849 | 1904 | 1924 | 1944 |

| | | | | | | | | | | | | | |
|--|------|------|------|-----------|------|-----------|------|------|------|------|-----------|-----------|-----------|
| Canterbury Bus Stn bay B1 | 1820 | 1840 | 1900 | 1920 | 1940 | 1955 | 2015 | 2045 | 2115 | 2145 | 2215 | 2245 | 2315 |
| St Dunstan`s Westgate Towers | 1827 | 1846 | 1906 | 1926 | 1946 | 2001 | 2021 | 2051 | 2121 | 2151 | 2221 | 2251 | 2321 |
| University Keynes Stop B | 1835 | 1853 | 1913 | 1933 | 1952 | 2007 | 2027 | 2057 | 2127 | 2157 | 2227 | 2257 | 2327 |
| Rough Common Turning | 1838 | 1856 | 1916 | 1936 | 1954 | 2009 | 2029 | 2059 | 2129 | 2159 | 2229 | 2259 | 2329 |
| Blean Tyler Hill Road | 1841 | 1859 | 1919 | 1939 | 1957 | 2012 | 2032 | 2102 | 2132 | 2202 | 2232 | 2302 | 2332 |
| Whitstable Borstal Hill Top | 1849 | 1906 | 1926 | 1946 | 2004 | 2019 | 2039 | 2109 | 2139 | 2209 | 2239 | 2309 | 2339 |
| Whitstable Horsebridge | 1856 | 1913 | 1933 | 1953 | 2010 | 2025 | 2045 | 2115 | 2145 | 2215 | 2245 | 2315 | 2345 |
| Tankerton Priest & Sow Cnr | 1903 | 1920 | 1940 | 2000 | 2017 | 2032 | 2052 | 2122 | 2152 | 2222 | 2252 | 2322 | 2352 |
| Westbrook Farm | 1912 | 1927 | 1947 | 2007 | 2023 | 2038 | 2058 | 2128 | 2158 | 2228 | 2258 | 2328 | 2358 |
| Greenhill Herne Drive | 1917 | ↓ | ↓ | 2012 | ↓ | ↓ | 2103 | ↓ | 2203 | ↓ | 2303 | ↓ | ↓ |
| Herne Bay Railway Stn | 1927 | 1936 | 1956 | 2018 | 2029 | 2044 | 2109 | 2134 | 2209 | 2234 | 2309 | 2334 | 0004 |
| Herne Bay High St, Fire Station | 1934 | 1943 | 2003 | 2025 | 2036 | 2048 | 2113 | 2138 | 2213 | 2238 | 2313 | 2338 | 0008 |
| Beltinge Dollies Corner | ↓ | 1948 | ↓ | ↓ | 2041 | ↓ | ↓ | 2143 | ↓ | 2243 | ↓ | ↓ | ↓ |
| Queens Roundabout | 1938 | ↓ | 2008 | 2030 | ↓ | 2051 | 2117 | ↓ | 2217 | ↓ | 2316 | 2341 | 0011 |
| Broomfield Gorse Lane | ↓ | 1953 | ↓ | EL | 2046 | EL | - | 2148 | - | 2248 | EL | EL | EL |
| Herne Church | 1945 | 1959 | 2014 | - | 2052 | - | 2122 | 2154 | 2222 | 2254 | | | |
| Broad Oak Sweechgate | 1952 | 2006 | 2021 | - | 2058 | - | 2127 | 2159 | 2227 | 2259 | | | |
| Sturry Railway Station | 1955 | 2008 | 2023 | - | 2100 | - | 2129 | 2201 | 2229 | 2301 | | | |
| Sturry Road ASDA | 2002 | 2013 | 2028 | - | 2104 | - | 2133 | 2205 | 2233 | 2305 | | | |
| Canterbury Bus Station | 2009 | 2019 | 2034 | - | 2110 | - | 2139 | 2211 | 2239 | 2311 | | | |

For notes, see page 7

Sundays and public holidays

From 30 April 2023

| | | | | | | | | | | | |
|---------------------------------------|-----------|-----------|-----------|-----------|-----------|------|-----------|------|------|------|-----------|
| Canterbury Bus Stn bay B1 | - | - | - | - | - | 0900 | - | 0940 | 1000 | 1020 | - |
| St Dunstan's Westgate Towers | - | - | - | - | - | 0905 | - | 0945 | 1005 | 1025 | - |
| University Keynes Stop B | - | - | - | - | - | 0913 | - | 0953 | 1013 | 1033 | - |
| Rough Common Turning | - | - | - | - | - | 0916 | - | 0956 | 1016 | 1036 | - |
| Blean Tyler Hill Road | - | - | - | - | - | 0918 | - | 0958 | 1018 | 1038 | - |
| Whitstable Borstal Hill Top | - | - | - | - | - | 0925 | - | 1005 | 1025 | 1045 | - |
| Whitstable Horsebridge | - | - | - | - | - | 0933 | - | 1013 | 1033 | 1053 | - |
| Tankerton Priest & Sow Cnr | - | - | - | - | - | 0941 | - | 1021 | 1041 | 1101 | - |
| Westbrook Farm | - | - | - | - | - | 0948 | - | 1028 | 1048 | 1108 | - |
| Greenhill Herne Drive | SR | SR | SR | SR | SR | 0952 | SR | ↓ | 1052 | 1112 | SR |
| Herne Bay Railway Stn | 0712 | 0741 | 0844 | 0916 | 0936 | 0959 | 1019 | 1039 | 1059 | 1119 | 1139 |
| Herne Bay High St, Fire Statio | 0716 | 0745 | 0854 | 0924 | 0944 | 1007 | 1027 | 1047 | 1107 | 1127 | 1147 |
| Beltinge Dollies Corner | ↓ | 0750 | 0900 | ↓ | ↓ | 1013 | ↓ | 1053 | ↓ | ↓ | 1153 |
| Queens Roundabout | 0720 | ↓ | 0904 | 0929 | 0949 | ↓ | 1032 | ↓ | 1112 | 1132 | ↓ |
| Broomfield Gorse Lane | ↓ | 0755 | 0908 | ↓ | ↓ | 1019 | ↓ | 1059 | ↓ | ↓ | 1159 |
| Herne Church | 0726 | 0802 | 0915 | 0934 | 0954 | 1025 | 1037 | 1105 | 1117 | 1137 | 1205 |
| Broad Oak Sweechgate | 0733 | 0809 | 0921 | 0940 | 1000 | 1031 | 1043 | 1111 | 1123 | 1143 | 1211 |
| Sturry Railway Station | 0735 | 0811 | 0923 | 0942 | 1002 | 1033 | 1045 | 1113 | 1125 | 1145 | 1213 |
| Sturry Road ASDA | 0739 | 0816 | 0928 | 0947 | 1007 | 1038 | 1050 | 1118 | 1130 | 1150 | 1218 |
| Canterbury Bus Station | 0745 | 0824 | 0936 | 0955 | 1015 | 1045 | 1058 | 1126 | 1138 | 1158 | 1226 |

| | | | | | | | | | | | |
|---------------------------------------|------|------|------|-------|----|----|----|-------|------|------|------|
| Canterbury Bus Stn bay B1 | 1100 | 1120 | 1140 | | 00 | 20 | 40 | | 1620 | 1640 | 1700 |
| St Dunstan's Westgate Towers | 1105 | 1125 | 1145 | | 05 | 25 | 45 | | 1625 | 1645 | 1705 |
| University Keynes Stop B | 1113 | 1133 | 1153 | | 13 | 33 | 53 | | 1633 | 1653 | 1713 |
| Rough Common Turning | 1116 | 1136 | 1156 | | 16 | 36 | 56 | | 1636 | 1656 | 1716 |
| Blean Tyler Hill Road | 1118 | 1138 | 1158 | | 18 | 38 | 58 | | 1638 | 1658 | 1718 |
| Whitstable Borstal Hill Top | 1125 | 1145 | 1205 | | 25 | 45 | 05 | | 1645 | 1705 | 1725 |
| Whitstable Horsebridge | 1133 | 1153 | 1213 | then | 33 | 53 | 13 | | 1653 | 1713 | 1733 |
| Tankerton Priest & Sow Cnr | 1141 | 1201 | 1221 | at | 41 | 01 | 21 | | 1701 | 1721 | 1741 |
| Westbrook Farm | 1148 | 1208 | 1228 | these | 48 | 08 | 28 | | 1708 | 1728 | 1748 |
| Greenhill Herne Drive | 1152 | 1212 | ↓ | mins | 52 | 12 | ↓ | until | 1712 | ↓ | 1752 |
| Herne Bay Railway Stn | 1159 | 1219 | 1239 | past | 59 | 19 | 39 | | 1719 | 1739 | 1759 |
| Herne Bay High St, Fire Statio | 1207 | 1227 | 1247 | each | 07 | 27 | 47 | | 1727 | 1747 | 1807 |
| Beltinge Dollies Corner | ↓ | ↓ | 1253 | hour | ↓ | ↓ | 53 | | ↓ | 1753 | ↓ |
| Queens Roundabout | 1212 | 1232 | ↓ | | 12 | 32 | ↓ | | 1732 | ↓ | 1812 |
| Broomfield Gorse Lane | ↓ | ↓ | 1259 | | ↓ | ↓ | 59 | | ↓ | 1759 | ↓ |
| Herne Church | 1217 | 1237 | 1305 | | 17 | 37 | 05 | | 1737 | 1805 | 1817 |
| Broad Oak Sweechgate | 1223 | 1243 | 1311 | | 23 | 43 | 11 | | 1743 | 1811 | 1823 |
| Sturry Railway Station | 1225 | 1245 | 1313 | | 25 | 45 | 13 | | 1745 | 1813 | 1825 |
| Sturry Road ASDA | 1230 | 1250 | 1318 | | 30 | 50 | 18 | | 1750 | 1818 | 1830 |
| Canterbury Bus Station | 1238 | 1258 | 1326 | | 38 | 58 | 26 | | 1758 | 1826 | 1838 |

continued on next page

SR This bus starts from Sea Street roundabout, about 3 minutes before rail stn

| | | | | | | | | | | |
|--|------|------|------|------|------|------|-----------|------|------|-----------|
| Canterbury Bus Stn bay B1 | 1720 | 1740 | 1805 | 1825 | 1845 | 1945 | 2015 | 2045 | 2145 | 2245 |
| St Dunstan's Westgate Towers | 1725 | 1745 | 1810 | 1830 | 1850 | 1950 | 2020 | 2050 | 2150 | 2250 |
| University Keynes Stop B | 1733 | 1753 | 1819 | 1839 | 1858 | 1958 | 2028 | 2058 | 2158 | 2258 |
| Rough Common Turning | 1736 | 1756 | 1822 | 1842 | 1901 | 2001 | 2031 | 2101 | 2201 | 2301 |
| Blean Tyler Hill Road | 1738 | 1758 | 1824 | 1844 | 1903 | 2003 | 2033 | 2103 | 2203 | 2303 |
| Whitstable Borstal Hill Top | 1745 | 1805 | 1831 | 1851 | 1910 | 2010 | 2040 | 2110 | 2210 | 2310 |
| Whitstable Horsebridge | 1753 | 1813 | 1840 | 1900 | 1915 | 2015 | 2045 | 2115 | 2215 | 2315 |
| Tankerton Priest & Sow Cnr | 1801 | 1821 | 1848 | 1908 | 1923 | 2023 | 2053 | 2123 | 2223 | 2323 |
| Westbrook Farm | 1808 | 1828 | 1855 | 1915 | 1930 | 2030 | 2100 | 2130 | 2230 | 2330 |
| Greenhill Herne Drive | 1812 | ↓ | 1859 | ↓ | 1934 | 2034 | ↓ | 2134 | 2234 | ↓ |
| Herne Bay Railway Stn | 1819 | 1839 | 1902 | 1920 | 1937 | 2037 | 2105 | 2137 | 2237 | 2335 |
| Herne Bay High St, Fire Station | 1827 | 1847 | 1908 | 1924 | 1943 | 2043 | 2109 | 2143 | 2243 | 2339 |
| Beltinge Dollies Corner | ↓ | 1853 | ↓ | ↓ | 1948 | 2048 | ↓ | 2148 | 2248 | ↓ |
| Queens Roundabout | 1832 | ↓ | 1913 | 1927 | 1952 | 2052 | 2111 | 2152 | 2252 | 2341 |
| Broomfield Gorse Lane | ↓ | 1859 | ↓ | ↓ | 1955 | 2055 | EL | 2155 | 2255 | EL |
| Herne Church | 1837 | 1905 | 1918 | 1931 | 2001 | 2101 | - | 2201 | 2301 | - |
| Broad Oak Sweechgate | 1843 | 1911 | 1925 | 1938 | 2008 | 2108 | - | 2208 | 2308 | - |
| Sturry Railway Station | 1845 | 1913 | 1927 | 1940 | 2010 | 2110 | - | 2210 | 2310 | - |
| Sturry Road ASDA | 1850 | 1918 | 1931 | 1944 | 2014 | 2114 | - | 2214 | 2314 | - |
| Canterbury Bus Station | 1858 | 1926 | 1937 | 1950 | 2020 | 2120 | - | 2220 | 2320 | - |

EL This journey continues to Eddington Lane

Notes used on pages 4 to 7

SR This bus starts from Sea Street roundabout, about 3 minutes before rail stn

06r14 Also serves Greenhill *Rowland Drive* at 0607

GR This bus starts from Greenhill *Rowland Drive* at 0702

EL This journey continues to Eddington Lane

During the daytime, most buses arrive at Herne Bay rail station
3 minutes before the time shown.

For other buses between Greenhill, Herne Bay, Broomfield and Canterbury, see route 6.

For other buses between Herne Bay, Beltinge and Hillborough, see route 36.

Mondays to Fridays except public holidays

from 30 April 2023

| | Notes | HS | HS | | | | | | | | | | Hol | Sch | | | | |
|----------------------------------|-------|------|------|------|------|------|------|------|------|-------|----|----|------|------|------|------|------|------|
| Greenhill Rowland Drive | 0609 | - | - | - | 0726 | 0754 | 0842 | 0914 | 0944 | | 14 | 44 | 1514 | HBH | 1544 | 1614 | 1644 | 1714 |
| Greenhill Herne Drive | 0614 | SR | SR | SR | 0731 | 0800 | 0848 | 0918 | 0948 | | 18 | 48 | 1518 | ↓ | 1548 | 1618 | 1648 | 1718 |
| Herne Bay Railway Station | 0620 | 0651 | 0712 | 0725 | 0740 | 0810 | 0857 | 0927 | 0957 | | 27 | 57 | 1527 | 1527 | 1556 | 1626 | 1656 | 1726 |
| Herne Bay Fire Station | 0626 | 0657 | 0718 | 0731 | 0746 | 0816 | 0903 | 0933 | 1003 | then | 33 | 03 | 1533 | 1534 | 1601 | 1631 | 1701 | 1731 |
| Beltinge Dollies Corner | 0631 | 0702 | 0724 | 0736 | 0752 | 0822 | 0909 | 0939 | 1009 | at | 39 | 09 | 1539 | 1540 | 1607 | 1637 | 1707 | 1737 |
| Altira Park Sainsburys | ↓ | 0707 | ↓ | 0741 | 0755 | 0834 | 0912 | 0942 | 1012 | these | 42 | 12 | 1542 | 1555 | 1612 | 1642 | 1712 | 1742 |
| Broomfield Plough | 0634 | 0710 | 0734 | 0744 | 0759 | 0838 | 0916 | 0946 | 1016 | mins | 46 | 16 | 1546 | 1559 | 1616 | 1646 | 1716 | 1746 |
| Herne Church | 0640 | 0717 | 0741 | 0751 | 0807 | 0846 | 0923 | 0953 | 1023 | past | 53 | 23 | 1553 | 1606 | 1623 | 1653 | 1723 | 1753 |
| Broad Oak Sweechgate | 0647 | 0726 | 0749 | 0800 | 0815 | 0854 | 0930 | 1000 | 1030 | each | 00 | 30 | 1600 | 1613 | 1630 | 1700 | 1730 | 1800 |
| Sturry Railway Station | 0649 | 0731 | 0752 | 0805 | 0818 | 0857 | 0932 | 1002 | 1032 | hour | 02 | 32 | 1602 | 1615 | 1632 | 1702 | 1732 | 1802 |
| Sturry Road ASDA | 0655 | 0737 | 0759 | 0812 | 0825 | 0903 | 0938 | 1008 | 1038 | | 08 | 38 | 1608 | 1621 | 1638 | 1708 | 1738 | 1808 |
| Canterbury Bus Station | 0700 | 0744 | 0809 | 0822 | 0835 | 0917 | 0948 | 1018 | 1048 | | 18 | 48 | 1618 | 1631 | 1648 | 1718 | 1748 | 1818 |

Saturdays

| | Notes | HS | HS | | | | | | | | | | | | | | | |
|----------------------------------|-------|------|------|------|------|------|------|-------|--|--|----|----|-------|--|------|------|------|--|
| Greenhill Rowland Drive | | - | 0726 | 0754 | 0842 | 0914 | 0944 | | | | 14 | 44 | | | 1614 | 1644 | 1714 | |
| Greenhill Herne Drive | | SR | 0731 | 0800 | 0848 | 0918 | 0948 | | | | 18 | 48 | | | 1618 | 1648 | 1718 | |
| Herne Bay Railway Station | | 0712 | 0740 | 0810 | 0857 | 0927 | 0957 | | | | 27 | 57 | | | 1626 | 1656 | 1726 | |
| Herne Bay Fire Station | | 0718 | 0746 | 0816 | 0903 | 0933 | 1003 | then | | | 33 | 03 | | | 1631 | 1701 | 1731 | |
| Beltinge Dollies Corner | | 0724 | 0752 | 0822 | 0909 | 0939 | 1009 | at | | | 39 | 09 | | | 1637 | 1707 | 1737 | |
| Altira Park Sainsburys | | ↓ | 0755 | 0834 | 0912 | 0942 | 1012 | these | | | 42 | 12 | | | 1642 | 1712 | 1742 | |
| Broomfield Plough | | 0734 | 0759 | 0838 | 0916 | 0946 | 1016 | mins | | | 46 | 16 | until | | 1646 | 1716 | 1746 | |
| Herne Church | | 0741 | 0807 | 0846 | 0923 | 0953 | 1023 | past | | | 53 | 23 | | | 1653 | 1723 | 1753 | |
| Broad Oak Sweechgate | | 0749 | 0815 | 0854 | 0930 | 1000 | 1030 | each | | | 00 | 30 | | | 1700 | 1730 | 1800 | |
| Sturry Railway Station | | 0752 | 0818 | 0857 | 0932 | 1002 | 1032 | hour | | | 02 | 32 | | | 1702 | 1732 | 1802 | |
| Sturry Road ASDA | | 0759 | 0825 | 0903 | 0938 | 1008 | 1038 | | | | 08 | 38 | | | 1708 | 1738 | 1808 | |
| Canterbury Bus Station | | 0809 | 0835 | 0917 | 0948 | 1018 | 1048 | | | | 18 | 48 | | | 1718 | 1748 | 1818 | |

For early morning, evening and Sunday buses serving Greenhill, please see the Triangle timetable

- Notes** **SR** Starts from Sea Street Roundabout, 3 minutes before Herne Bay station.
- HS** This journey serves Hillborough School, 7 minutes after Beltinge.
- HBH** Starts from Herne Bay High School at 1520 and runs via Hillborough School at 1545
- Sch** This journey runs on schooldays only
- Hol** This journey runs in school holidays only

Mondays to Fridays *except public holidays*

from 30 April 2023

| | Notes | Sch | | | | | | | | | | | | | | | | | |
|--|-------|------|------|------|------|------|-------|----|----|-------|------|------|------|------|------|------|------|------|------|
| Canterbury Bus Stn bay C4 | 0700 | - | 0739 | 0839 | 0909 | 0939 | | 09 | 39 | | 1339 | 1409 | 1439 | 1509 | 1539 | 1609 | 1639 | 1715 | 1745 |
| Sturry Railway Station | 0712 | - | 0755 | 0855 | 0925 | 0955 | | 25 | 55 | | 1355 | 1425 | 1455 | 1525 | 1557 | 1627 | 1659 | 1735 | 1800 |
| Broad Oak Sweechgate | 0715 | - | 0758 | 0858 | 0928 | 0958 | | 28 | 58 | | 1358 | 1428 | 1458 | 1528 | 1600 | 1630 | 1702 | 1738 | 1803 |
| Herne Canterbury Fields | 0720 | HSL | 0803 | 0903 | 0933 | 1003 | then | 33 | 03 | | 1403 | 1433 | 1503 | 1533 | 1605 | 1635 | 1707 | 1743 | 1808 |
| Broomfield Gorse Lane | 0729 | 0743 | 0814 | 0912 | 0942 | 1012 | at | 42 | 12 | | 1412 | 1442 | 1512 | 1542 | 1616 | 1646 | 1717 | 1752 | 1817 |
| Altira Park Sainsburys | 0732 | 0746 | 0818 | 0916 | 0946 | 1016 | these | 46 | 16 | | 1416 | 1446 | 1516 | 1546 | 1620 | 1650 | 1721 | 1756 | 1821 |
| Beltinge Dollies Corner | 0737 | 0805 | 0823 | 0921 | 0951 | 1021 | mins | 51 | 21 | until | 1421 | 1451 | 1521 | 1551 | 1625 | 1655 | 1726 | 1801 | 1826 |
| Herne Bay Library <i>arrive</i> | 0743 | 0811 | 0829 | 0927 | 0957 | 1027 | past | 57 | 27 | | 1427 | 1457 | 1527 | 1557 | 1631 | 1701 | 1732 | 1807 | 1832 |
| Herne Bay Library <i>depart</i> | 0743 | 0811 | 0831 | 0929 | 0959 | 1029 | each | 59 | 29 | | 1429 | 1459 | 1529 | 1559 | 1633 | 1703 | 1734 | 1809 | 1834 |
| Herne Bay Railway Stn <i>arrive</i> | 0747 | 0815 | 0835 | 0934 | 1004 | 1034 | hour | 04 | 34 | | 1434 | 1504 | 1534 | 1604 | 1637 | 1707 | 1738 | 1813 | 1838 |
| Herne Bay Railway Stn <i>depart</i> | 0747 | 0815 | 0835 | 0937 | 1007 | 1037 | | 07 | 37 | | 1437 | 1507 | 1537 | 1607 | 1637 | 1707 | 1738 | 1813 | 1838 |
| Greenhill Rowland Drive | 0752 | ↓ | 0842 | 0942 | 1012 | 1042 | | 12 | 42 | | 1442 | 1512 | 1542 | 1612 | 1642 | 1712 | ↓ | ↓ | ↓ |
| Greenhill Herne Drive | 0800 | ↓ | 0848 | 0948 | 1018 | 1048 | | 18 | 48 | | 1448 | 1512 | 1548 | 1618 | 1648 | 1718 | 1743 | 1818 | 1843 |
| Herne Bay High School | | 0820 | | | | | | | | | | | | | | | | | |

Saturdays

| | | | | | | | | | | | | |
|--|------|------|-------|----|----|-------|--|------|------|------|------|------|
| Canterbury Bus Stn bay C4 | 0809 | 0839 | | 09 | 39 | | | 1539 | 1609 | 1639 | 1715 | 1745 |
| Sturry Railway Station | 0825 | 0855 | | 25 | 55 | | | 1557 | 1627 | 1659 | 1735 | 1800 |
| Broad Oak Sweechgate | 0828 | 0858 | | 28 | 58 | | | 1600 | 1630 | 1702 | 1738 | 1803 |
| Herne Church | 0833 | 0903 | then | 33 | 03 | | | 1605 | 1635 | 1707 | 1743 | 1808 |
| Broomfield Plough | 0842 | 0912 | at | 42 | 12 | | | 1614 | 1644 | 1716 | 1752 | 1817 |
| Altira Park Sainsburys | 0846 | 0916 | these | 46 | 16 | | | 1618 | 1648 | 1720 | 1756 | 1821 |
| Beltinge Dollies Corner | 0851 | 0921 | mins | 51 | 21 | until | | 1623 | 1653 | 1725 | 1801 | 1826 |
| Herne Bay Library <i>arrive</i> | 0857 | 0927 | past | 57 | 27 | | | 1629 | 1659 | 1731 | 1807 | 1832 |
| Herne Bay Library <i>depart</i> | 0859 | 0929 | each | 59 | 29 | | | 1631 | 1701 | 1733 | 1809 | 1834 |
| Herne Bay Railway Stn <i>arrive</i> | 0903 | 0934 | hour | 04 | 34 | | | 1636 | 1705 | 1737 | 1813 | 1838 |
| Herne Bay Railway Stn <i>depart</i> | 0907 | 0937 | | 07 | 37 | | | 1639 | 1705 | 1737 | 1813 | 1838 |
| Greenhill Rowland Drive | 0912 | 0942 | | 12 | 42 | | | 1644 | 1710 | ↓ | ↓ | ↓ |
| Greenhill Herne Drive | 0918 | 0948 | | 18 | 48 | | | 1648 | 1718 | 1742 | 1818 | 1843 |

For early morning, evening and Sunday buses serving Greenhill, please see the Triangle timetable

Notes **Sch** This journey runs on schooldays only
HSL This journey starts from Herne School Lane at 0734
0746
0805 This journey serves Hillborough School at 0755

1512 Only serves this stop in school holidays
1512 Time on schooldays. On other days, arrives at 1518

SDP

Buncton Barn
Buncton Lane
Bolney
West Sussex
RH17 5RE