

ANNEX B

The “Old Way”: An Ancient Route ¹

1. Similar to the *Camino de Santiago de Compostela* in Spain, this pilgrimage path was almost forgotten – but BPT co-founder William Parsons rediscovered it on Britain’s oldest road map (Gough Map, c.1360). This map reveals a red line running between Southampton and Canterbury.
2. This path would not have been exclusively used by pilgrims, but the waypoints include the large religious houses that formed the network of hospitality for pilgrims.
3. It also connects the harbours and ports of the South coast, where many European pilgrims would have disembarked before joining the most convenient and direct route to the shrine of Thomas Becket.
4. Many of these waypoints have a long history of pilgrimage as destinations themselves, and in between them you’ll discover lost shrines, healing wells and pilgrim graffiti hinting at the journeys known to have been made back and forth along the paths we now call the Old Way. The modern route still links all of the Gough Map’s waypoints but includes so much more. The revived and recreated Old Way follows some of the oldest tracks in Britain.

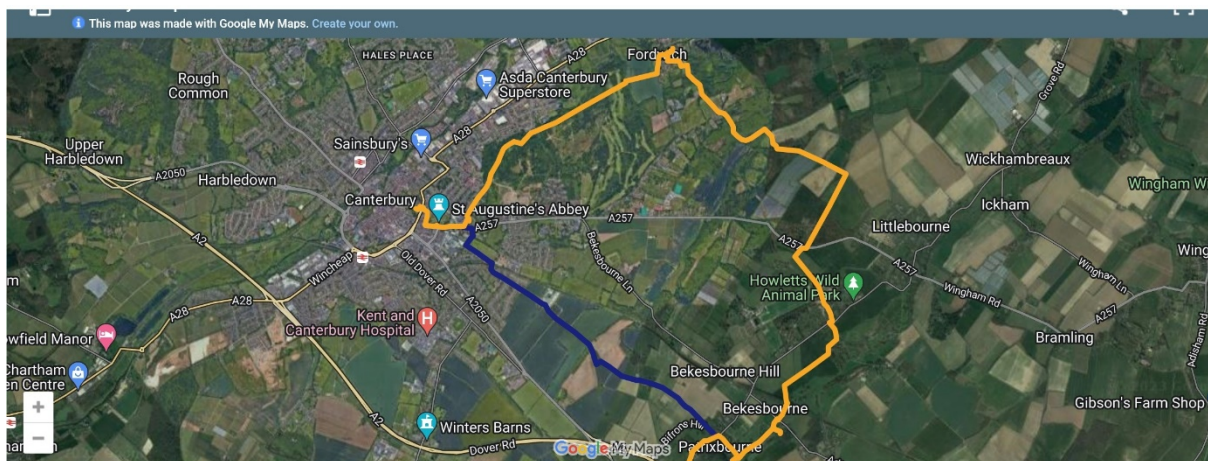
¹ Adapted from <https://britishpilgrimage.org/old-way/> by William Parsons

Gough Map, c. 1360

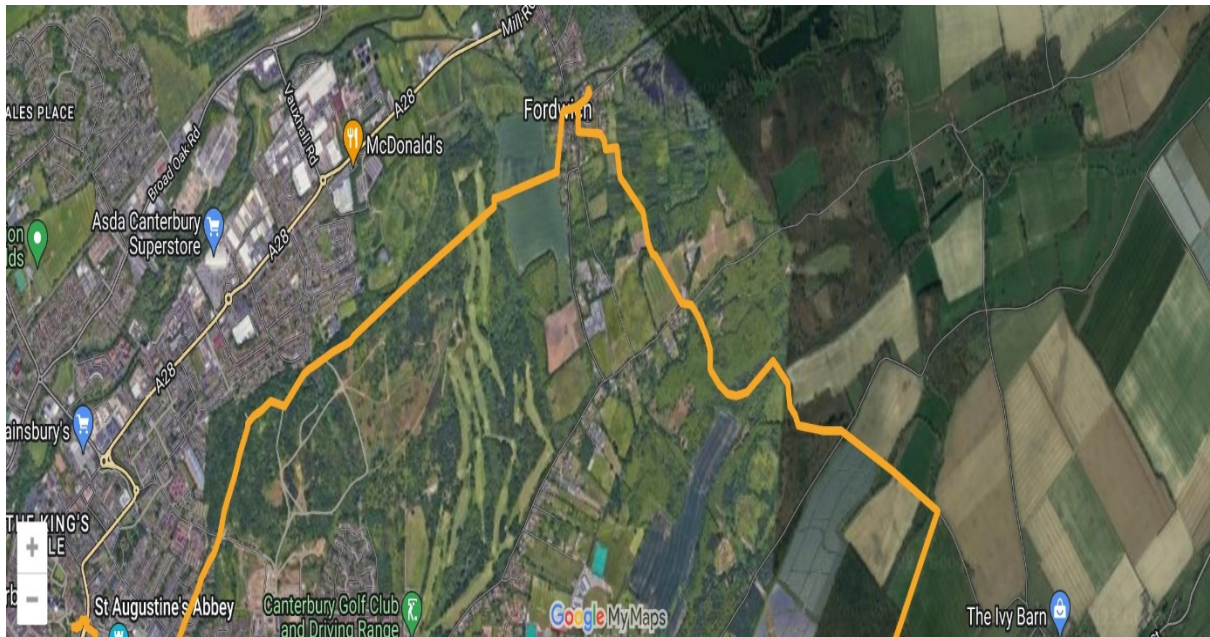


The original Old Way route

The section which concerns us is shown below.



A more detailed view focussing on Fordwich the Old Way is marked in Orange



The currently preferred route for the Eastern Bypass would sever this historic Pilgrim's route.