



Creation of inset floodplain to accommodate higher flows and dissipate flow energy to reduce risk of bank erosion.

Connect ditch with new realigned channel. Confluence should be graded into the topography of the new channel to ensure a smooth transition and to avoid any abrupt breaks in slope.

Infill existing channel using the excavated material from the new channel.

Leaky log jams to promote more sediment deposition and greater inset floodplain connectivity.

Connect ditch with new realigned channel. Confluence should be graded into the topography of the new channel to ensure a smooth transition and to avoid any abrupt breaks in slope.

New realigned two-stage channel with inset floodplain, providing a more sinuous geometry and habitat diversity.

Vegetated margin (~10m) along the banks of the inset floodplain to provide additional nutrient retention and habitat diversity.

**SAFETY HEALTH AND ENVIRONMENTAL INFORMATION**

In addition to the hazards/risk normally associated with the types of work detailed on this drawing, note the following risks and information.

\* Please note that risks listed here are not exhaustive.

**CONSTRUCTION**

- \* Working in close proximity to deep water environments.
- \* Disturbing or striking existing utilities and services.
- \* Saturated ground conditions.
- \* Protected species.

It is assumed that all works will be carried out by a competent contractor working, where appropriate, to an approved method statement.

**LEGEND**

- Existing channel
- Existing tributaries and ditches
- Proposed Design**
- New realigned channel
- Two-stage channel/ Inset floodplain
- Regraded floodplain banks
- Buffer strip
- Infilled existing channel
- Wood Structure

Project Number 2150779

Project Title  
**Stodmarsh Stream  
Enhancement Scheme**

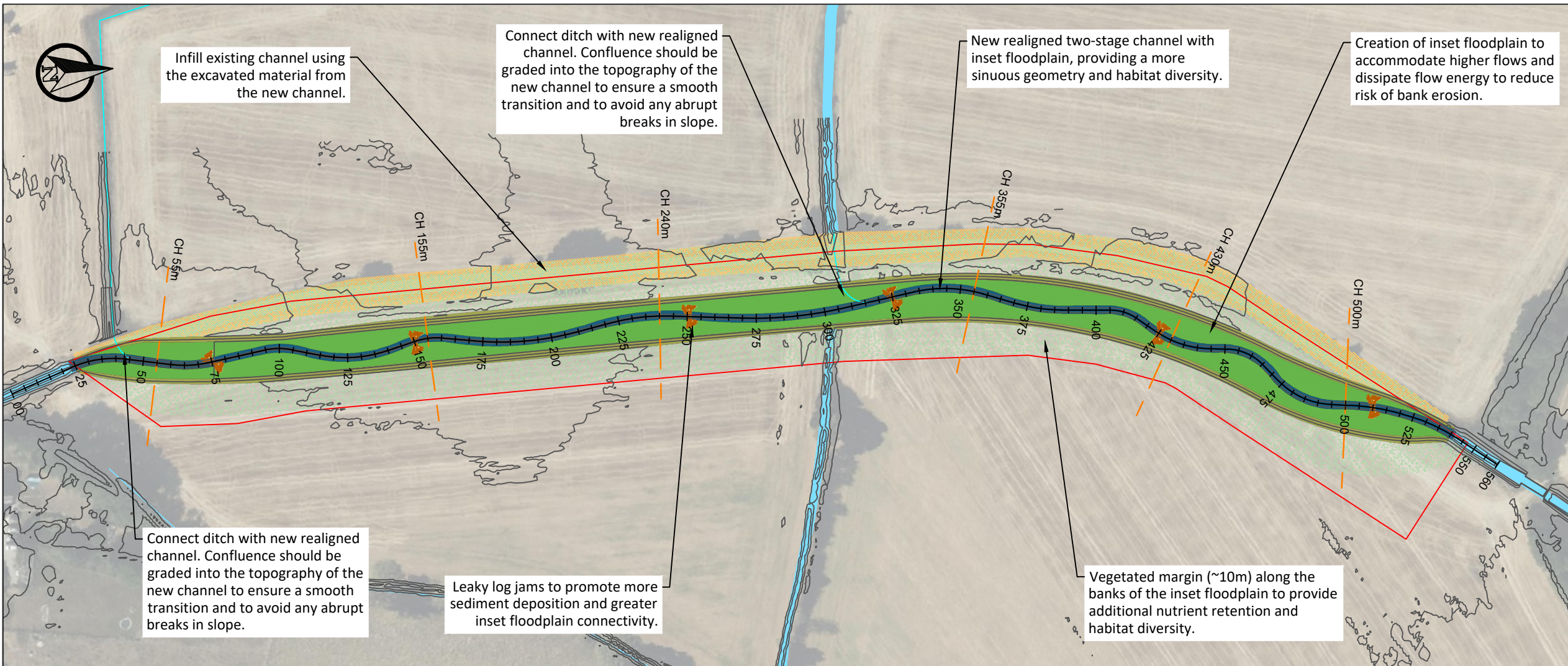
Drawing Title  
**BLYBI WOOD DD1  
PLAN VIEW**

Scale @ A3  
1:2,500  
0 30 60 Meters  
OSGB36 / British National Grid

Drawn	Date	Version
Jl	03/12/2025	Rev5 v2
Designed	Checked	Approved
LC	LC	LC



Drawing Number  
**2150779\_Bliby1\_DE\_01**



**SAFETY HEALTH AND ENVIRONMENTAL INFORMATION**

In addition to the hazards/risk normally associated with the types of work detailed on this drawing, note the following risks and information.

- \* Please note that risks listed here are not exhaustive.

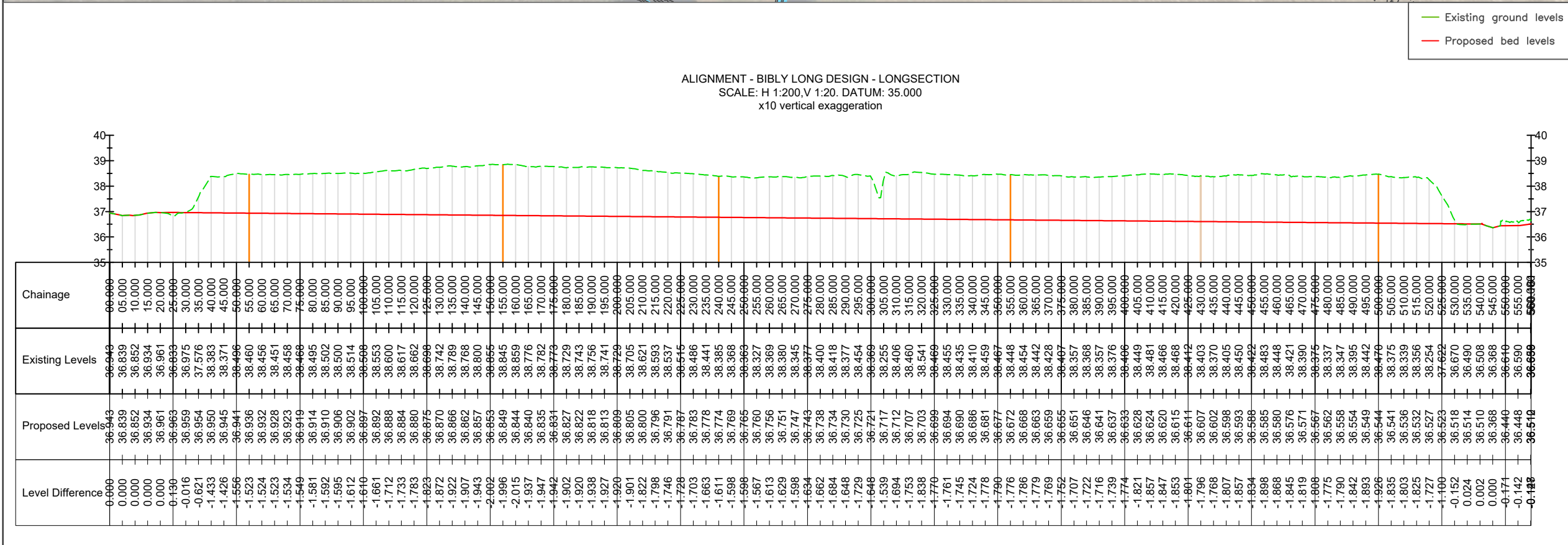
**CONSTRUCTION**

- \* Working in close proximity to deep water environments.
- \* Disturbing or striking existing utilities and services.
- \* Saturated ground conditions.
- \* Protected species.

It is assumed that all works will be carried out by a competent contractor working, where appropriate, to an approved method statement.

**LEGEND**

- Existing channel
- Existing tributaries and ditches
- Proposed Design
  - New realigned channel
  - Two-stage channel/ Inset floodplain
  - Regraded floodplain banks
  - Buffer strip
  - Infilled existing channel
  - Wood Structure



Project Number: 2150779

Project Title: **Stodmarsh Stream Enhancement Scheme**

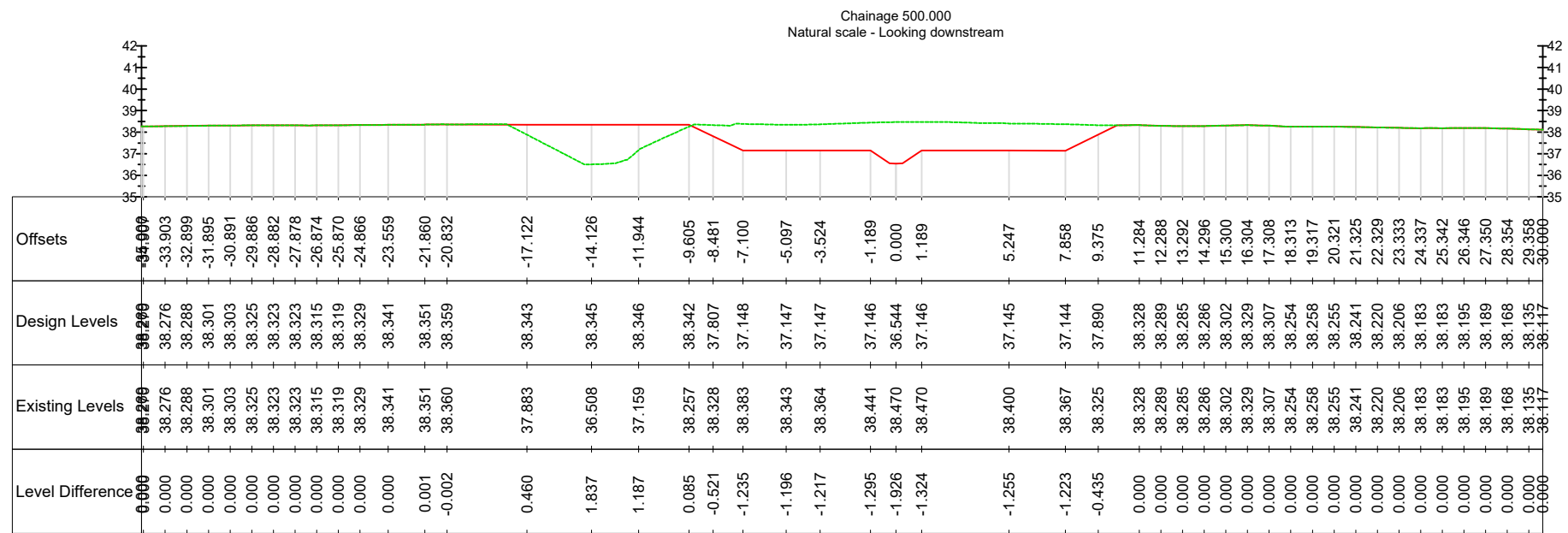
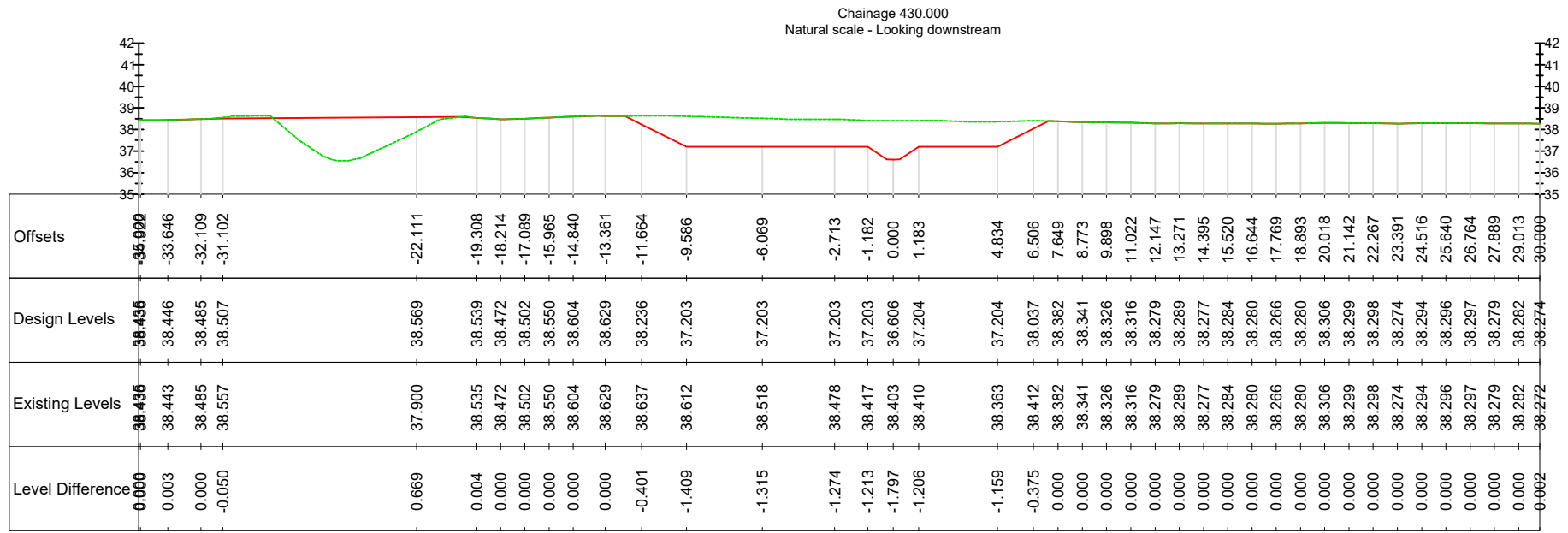
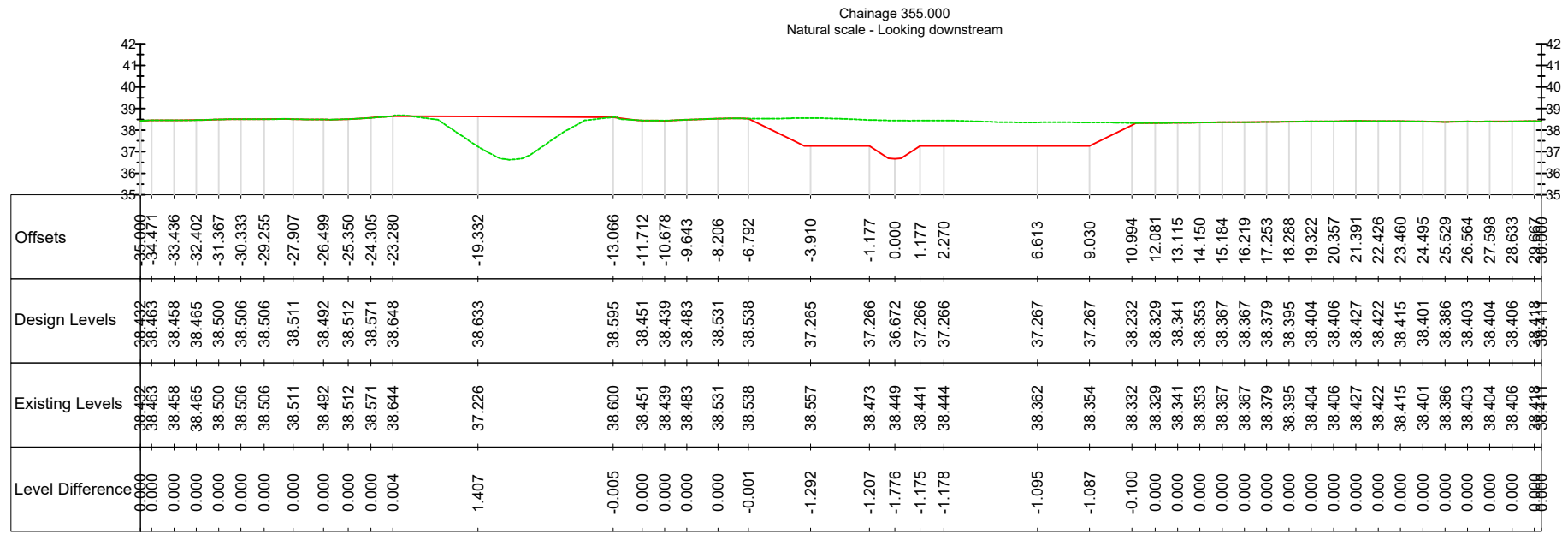
Drawing Title: **BLYBI WOOD DD1 LONG PROFILE**

Scale @ A3: 1:1,700  
0 20 40 Meters  
OSGB36 / British National Grid

Drawn	Date	Version
Jl	03/12/2025	Rev5 v2
Designed	Checked	Approved
LC	LC	LC

Drawing Number: **2150779\_Blybi1\_DE\_02**





**SAFETY HEALTH AND ENVIRONMENTAL INFORMATION**

In addition to the hazards/risk normally associated with the types of work detailed on this drawing, note the following risks and information.

- \* Please note that risks listed here are not exhaustive.

**CONSTRUCTION**

- \* Working in close proximity to deep water environments.
- \* Disturbing or striking existing utilities and services.
- \* Saturated ground conditions.
- \* Protected species.

It is assumed that all works will be carried out by a competent contractor working, where appropriate, to an approved method statement.

**LEGEND**

- Existing levels
- Proposed levels

Project Number: 2150779

Project Title:  
**Stodmarsh Stream Enhancement Scheme**

Drawing Title:  
**BLYBI WOOD DD1 CROSS SECTIONS**

Scale @ A3: 1:300  
OSGB36 / British National Grid

Drawn	Date	Version
JL	03/12/2025	Rev5 v2
Designed	Checked	Approved
LC	LC	LC



Drawing Number:  
**2150779\_Blybi1\_DE\_04**



Creation of inset floodplain to accommodate higher flows and dissipate flow energy to reduce risk of bank erosion.

Connect ditch with new realigned channel. Confluence should be graded into the topography of the new channel to ensure a smooth transition and to avoid any abrupt breaks in slope.

Infill existing channel using the excavated material from the new channel.

Leaky log jams to promote more sediment deposition and greater inset floodplain connectivity.

Connect ditch with new realigned channel. Confluence should be graded into the topography of the new channel to ensure a smooth transition and to avoid any abrupt breaks in slope.

New realigned two-stage channel with inset floodplain, providing a more sinuous geometry and habitat diversity.

Vegetated margin (~10m) along the banks of the inset floodplain to provide additional nutrient retention and habitat diversity.

**CUT FILL ANALYSIS**

- -2.5m to -1.5m
- -1.5m to -1m
- -1m to -0.5m
- -0.5m to 0
- 0 to 0.5m
- 0.5m to 1m
- 1 to 1.5m
- 1.5m to 2.5m

CUT = -9,250m<sup>3</sup>  
 FILL = +3,970m<sup>3</sup>  
 NET = -5,280m<sup>3</sup> [CUT]

**SAFETY HEALTH AND ENVIRONMENTAL INFORMATION**

In addition to the hazards/risk normally associated with the types of work detailed on this drawing, note the following risks and information.

\* Please note that risks listed here are not exhaustive.

**CONSTRUCTION**

- \* Working in close proximity to deep water environments.
- \* Disturbing or striking existing utilities and services.
- \* Saturated ground conditions.
- \* Protected species.

It is assumed that all works will be carried out by a competent contractor working, where appropriate, to an approved method statement.

**LEGEND**

- Existing channel
- Existing tributaries and ditches
- Proposed Design
- New realigned channel
- Two-stage channel/ Inset floodplain
- Regraded floodplain banks
- Buffer strip
- Infilled existing channel
- Wood Structure

Project Number 2150779

Project Title  
**Stodmarsh Stream  
 Enhancement Scheme**

Drawing Title  
**BLYBI 1  
 CUT FILL ANALYSIS**

Scale @ A3  
 1:2,500  
 OSGB36 / British National Grid

Drawn	Date	Version
Jl	03/12/2025	Rev5 v2
Designed	Checked	Approved
LC	LC	LC



Drawing Number  
**2150779\_Bliby1\_DE\_05**